

2014



KITCHEN CABINETS

KITCHEN CABINETRY

Pgs. 576-586



ALUMINUM FRAME GLASS DOORS.....	584-586	PRE-ASSEMBLED KITCHEN CABINETS (Upgrades)	TUSCANY KITCHEN CABINETS (Accessories)..	579-580
CLASSIC KITCHEN CABINETS	577-582	Wine Rack	Base End Shelves	579
Cambridge Collection	581	Woven Wire Grilles.....	Door Panels.....	579
Mansfield Collection	581	TUSCANY KITCHEN CABINETS.....	End Panel.....	579
Randolph Collection	582	3 Drawer Base Cabinet	Finished End Panel	579
Tuscany Collection	577-580	Base Cabinets	Finished Panel.....	579
York Collection.....	582	Blind Corner Base Cabinet	Mouldings	580
KITCHEN CABINETS (RTA & Assembled)	576-586	Diagonal Corner Sink Front.....	Roll Out Drawers	579, 583
PRE-ASSEMBLED KITCHEN CABINETS (Upgrades)		Microwave Cabinet.....	Standard Fillers	579
Decorative Mouldings	583	Pantry	Toe Kick Board	580
Drawer Unit for Desk	583	Refrigerator Cabinet	Valances	580
Glass Door Inserts.....	626-633	Sink Base Cabinet	Wall Open Shelves	579
Oven Cabinet.....	583	Sink Base Cabinet.....	Wall Plate Rack Cabinet.....	579
Pantry Unit.....	583	Square Easy Reach Corner Base Cabinet.....	Wall Wine Rack Cabinet.....	579
Pull Out Waste Containers	583	Wall Angle Corner Cabinet		
Roll Out Drawers	579, 583	Wall Blind Corner.....		
Sink Front Tip Out Trays.....	583	Wall Cabinets (2 Door)		
Wall Blind Covers	583	Wall Cabinets		

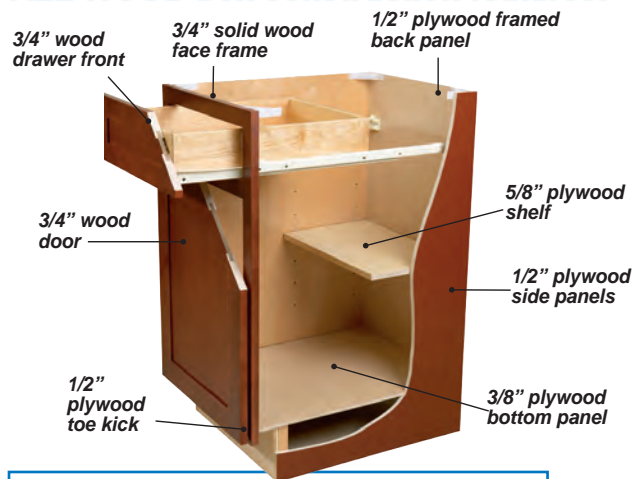
SEE PAGES 1007-1023 FOR A - Z INDEX

Pre-assembled & Ready to Assemble (RTA) Kitchen Cabinetry

Choose from convenient pre-assembled or ready to assemble (RTA) with its easy CAM-lock joinery. Our selection of cabinet styles & finishes compliment both traditional & contemporary decor.

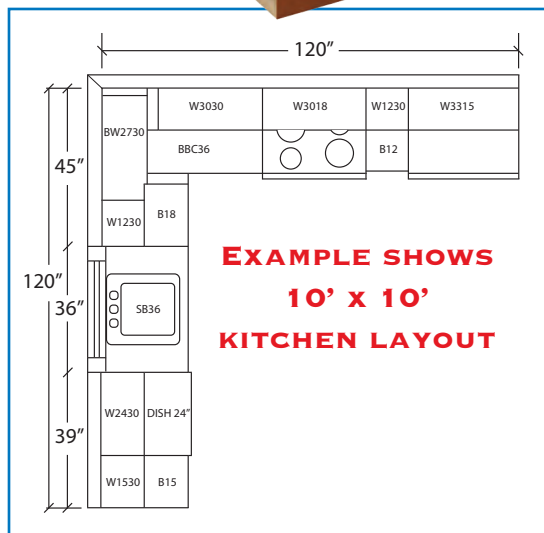


ALL WOOD box construction features:



FEATURES:

- ★ ALL WOOD BOX CONSTRUCTION
- ★ 1/2" & 5/8" SOLID WOOD 4-SIDED DRAWER BOXES
- ★ REAL WOOD VENEER FINISH ON INTERIOR AND EXTERIOR
- ★ MATCHING EXTERIOR FINISH ON ALL CABINETS
- ★ SEMI-GLOSS LACQUER FINISH
- ★ SELF CLOSING MULTI-ADJUSTABLE HINGES
- ★ 30" & 42" WALL CABINETS
- ★ SHIPPING F.O.B. WAREHOUSE
- ★ SOFT CLOSE DRAWER GLIDES OPTION AVAILABLE ON TUSCANY LINE



Pre-assembled

Assembled with camlock locking mechanism along with traditional glue and staple construction for additional strength.

Ready to Assemble (RTA)

Ready to assemble cabinetry can be assembled in just minutes with the turn of a screwdriver using our Cam-Lock joinery system.

Layout Service

Take advantage of our layout service. Send us your clear, easy to read plans & dimensions and we can provide a layout for you.

Part Number Example

Use appropriate letter for finish: Merlot (M), Hazelnut (H), Toffee (T) & Espresso (E). Part Number Example: TUS-W0930-M (9"W x 30"H Tuscany Wall Cabinet: Merlot)

KITCHEN CABINETRY

TUSCANY

Maple Grain Finish 4 Finishes Available

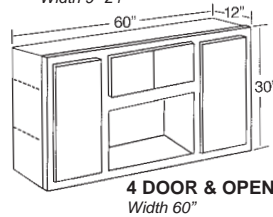
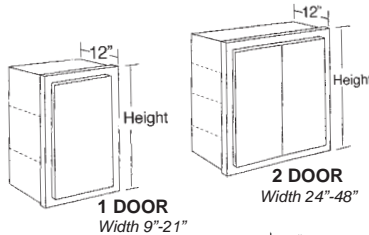
- Shaker full overlay with 1/4" reveal
- 17mm dovetail drawer with epoxy coated undermount drawer glides
- 24"-36", 48" & 60" cabinets feature butt doors with no center stile
- 42" cabinet feature non butt doors with a center stile



30" HIGH WALL CABINETS

2 Adjustable shelves

PART #	DIMENSIONS
TUS-W0930-*	9"W x 30"H
TUS-W1230-*	12" W x 30"H
TUS-W1530-*	15" W x 30"H
TUS-W1830-*	18" W x 30"H
TUS-W2130-*	21" W x 30"H
TUS-W2430-*	24" W x 30"H
TUS-W2730-*	27" W x 30"H
TUS-W3030-*	30" W x 30"H
TUS-W3330-*	33" W x 30"H
TUS-W3630-*	36" W x 30"H
TUS-W4230-*	42" W x 30"H
TUS-W4830-*	48" W x 30"H
TUS-W6030-*	60" W x 30"H

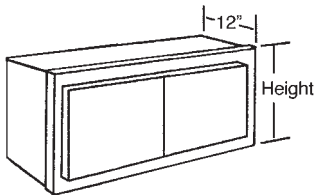


42" HIGH WALL CABINETS

3 Adjustable shelves

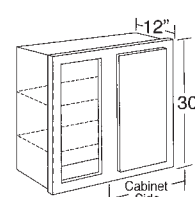
PART #	DIMENSIONS
TUS-W0942-*	9"W x 42"H
TUS-W1242-*	12"W x 42"H
TUS-W1542-*	15"W x 42"H
TUS-W1842-*	18"W x 42"H
TUS-W2142-*	21"W x 42"H
TUS-W2442-*	24"W x 42"H
TUS-W2742-*	27" W x 42"H
TUS-W3042-*	30" W x 42"H
TUS-W3342-*	33" W x 42"H
TUS-W3642-*	36" W x 42"H
TUS-W4242-*	42" W x 42"H

WALL CABINETS 2 DOOR

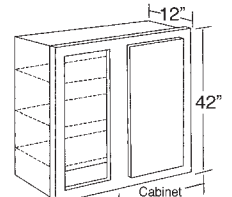


PART #	DIMENSIONS
24" HIGH - 1" ADJUSTABLE SHELF	
TUS-W2424-*	24"W x 24"H
TUS-W3024-*	30"W x 24"H
TUS-W3324-*	33"W x 24"H
TUS-W3624-*	36"W x 24"H
18" HIGH	
TUS-W2418-*	24"W x 18"H
TUS-W3018-*	30"W x 18"H
TUS-W3318-*	33"W x 18"H
TUS-W3618-*	36"W x 18"H
15" HIGH	
TUS-W2415-*	24"W x 15"H
TUS-W3015-*	30"W x 15"H
TUS-W3315-*	33"W x 15"H
TUS-W3615-*	36"W x 15"H
12" HIGH	
TUS-W3012-*	30"W x 12"H
TUS-W3312-*	33"W x 12"H
TUS-W3612-*	36"W x 12"H

WALL BLIND CORNER



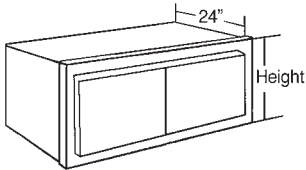
2 Adjustable shelves for 30"



3 Adjustable shelves for 42"

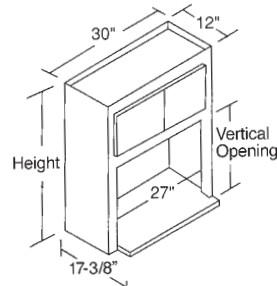
PART #	DIMENSIONS
TUS-WB2730-*	27" W x 30" H
TUS-WB2742-*	27" W x 42" H

REFRIGERATOR CABINET



PART #	DIMENSIONS
TUS-W331524-*	33" W x 15" H
TUS-W361524-*	36" W x 15" H
TUS-W332424-*	33" W x 24" H
TUS-W362424-*	36" W x 34" H

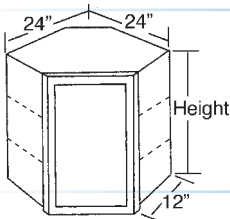
MICROWAVE CABINET



- Lower shelf depth is 16-1/2"
- No upper shelf for 30", one adjustable for 42"
- Vertical Opening: 15-3/4" for 30", 18-3/4" for 42"

PART #	DIMENSIONS
TUS-MC3030-*	30" x 30"
TUS-MC3042-*	30" x 42"

WALL ANGLE CORNER CABINET



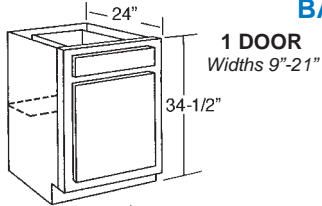
PART #	DIMENSIONS
TUS-WD2430-*	24" W x 30" H
TUS-WD2442-*	24" W x 42" H

Soft Close Drawer Glides are available

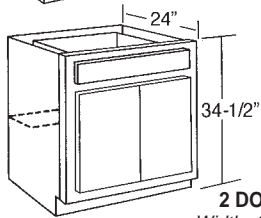
KITCHEN CABINETRY

• 24"-36", 48" & 60" cabinets feature butt doors with no center stile • 42" cabinet feature non butt doors with a center stile

BASE CABINETS



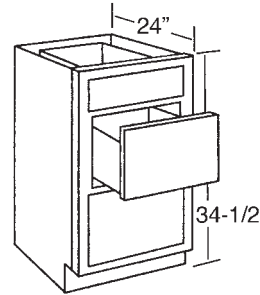
1 DOOR
Widths 9"-21"



2 DOOR
Widths 24"-48"

PART #	DIMENSIONS
TUS-B09*	9"W x 34-1/2"H
TUS-B12*	12"W x 34-1/2"H
TUS-B15*	15"W x 34-1/2"H
TUS-B18*	18"W x 34-1/2"H
TUS-B21*	21"W x 34-1/2"H
TUS-B24*	24"W x 34-1/2"H
TUS-B27*	27"W x 34-1/2"H
TUS-B30*	30"W x 34-1/2"H
TUS-B33*	33"W x 34-1/2"H
TUS-B36*	36"W x 34-1/2"H
TUS-B42*	42"W x 34-1/2"H
TUS-B48*	48"W x 34-1/2"H

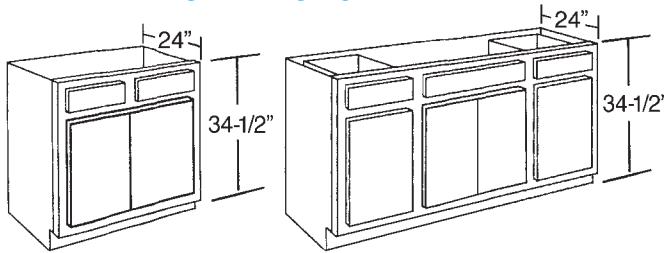
B36, B42 features 2 drawers
B48 features 4 doors and 2 drawers



3 DRAWER BASE CABINET

PART #	DIMENSIONS
TUS-DB15*	15"W x 34-1/2"H
TUS-DB18*	18"W x 34-1/2"H
TUS-DB21*	21"W x 34-1/2"H
TUS-DB24*	24"W x 34-1/2"H
TUS-DB30*	30"W x 34-1/2"H

SINK BASE CABINET

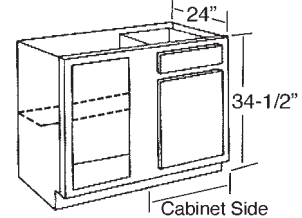


PART #	DIMENSIONS
TUS-SB30*	30"W x 34-1/2"H
TUS-SB33*	33"W x 34-1/2"H
TUS-SB36*	36"W x 34-1/2"H
TUS-SB42*	42"W x 34-1/2"H
TUS-SB60*	60"W x 34-1/2"H

SB30, SB33
1 False drawer front, 2 doors
SB36, SB42
2 false drawer fronts, 2 doors
SB60
2- 25" Working drawers, 1- 30"
false drawer front, 4 drawers total.

BLIND CORNER BASE

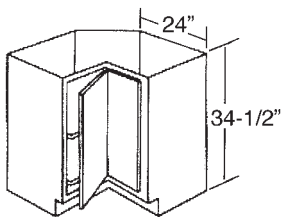
One adjustable shelf
Blind Corners are reversible



PART #	DIMENSIONS
TUS-BBC42*	42"W x 34-1/2"H

BBC42 can use RD15 roll out drawer

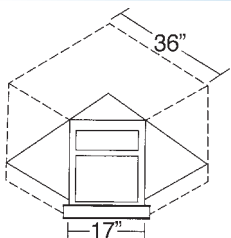
SQUARE EASY REACH CORNER BASE



Lazy susan available. Sold separately.
One set of two susans per order.

PART #	DIMENSIONS
TUS-ER3612*	36"W x 34-1/2"H

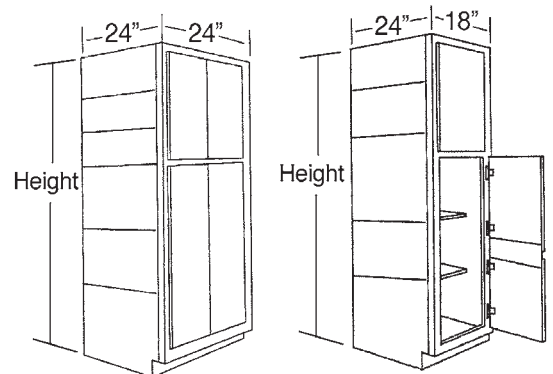
DIAGONAL CORNER SINK FRONT



PART #	DIMENSIONS
TUS-CSF36*	36"W x 34-1/2"H

Includes face frame and door only

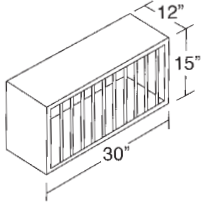
PANTRY Included 4 full depth shelves



PART #	DIMENSIONS
TUS-WP1884*	18"W x 84"H
TUS-WP1896*	18"W x 84"H
TUS-WP2484*	24"W x 84"H
TUS-WP2496*	24"W x 84"H

Soft Close Drawer Glides are available

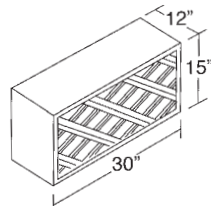
KITCHEN CABINETRY - Accessories



WALL PLATE RACK CABINET

30" wide holds 13 dishes
Dowels in matching exterior color

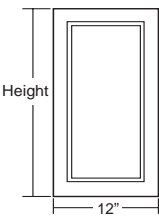
PART #	DIMENSIONS
TUS-WPR3015-*	30"W x 15"H



WALL WINE RACK CABINET

4" openings for 11 or more wine bottles

PART #	DIMENSIONS
TUS-WWR3015-*	30"W x 15"H

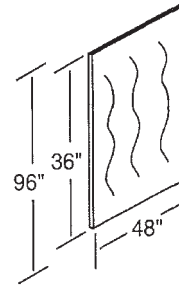


DOOR PANELS

PART #	DIMENSIONS
TUS-DP1230-*	12"W x 30"H
TUS-DP1242-*	12 W x 42"H

Decorative door panels designed to fit on side of wall cabinet or base cabinet

For wall cabinets, use one door panel.
For base cabinets, use two door panels.

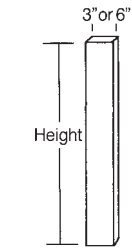


FINISHED PANEL

6mm Thick

PART #	DIMENSIONS
TUS-FP4836-*	48"W x 36"H
TUS-FP4896-*	48"W x 96"H

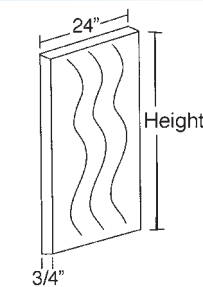
Finish grain is vertical along the 36" side for the FP4836 and 96" side for the FP4896



STANDARD FILLERS

PART #	DIMENSIONS
TUS-FS3X30-*	3"W x 30"H
TUS-FS3X42-*	3"W x 42"H
TUS-FS3X84-*	3"W x 84"H
TUS-FS3X96-*	3"W x 96"H
TUS-FS6X30-*	6"W x 30"H
TUS-FS6X42-*	6"W x 42"H
TUS-FS6X84-*	6"W x 84"H
TUS-FS6X96-*	6"W x 96"H

Edges are finished, allowing for use as an applique.
Fillers cannot be attached to cabinet at factory



FINISHED END PANEL

PART #	DIMENSIONS/DESCRIPTION
TUS-FEP84-*	24"W x 84"H x 3/4"D
TUS-FEP96-*	24"W x 96"H x 3/4"D

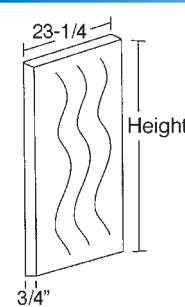


ROLL OUT DRAWERS

Drawer Height: 4.13

B30 - two RD15, B36 - two RD18,
B42 - two RD21, B48 - two RD24,
SB60 - two RD15, BBC42/45 - one RD15

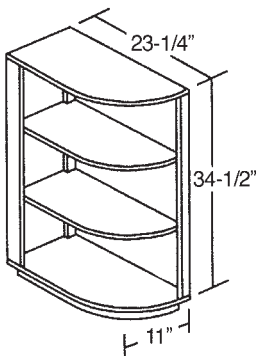
PART #	SIZE
TUS-RD15-*	15"
TUS-RD18-*	18"
TUS-RD21-*	21"
TUS-RD24-*	24"



END PANEL

Matching exterior finish on both sides
Toekick not included

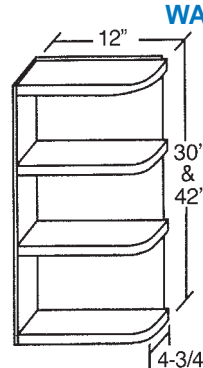
PART #	DIMENSIONS/DESCRIPTION
TUS-BEP3-*	3" filler w/panel 24"W x 30" H x 1/2"
TUS-EP84-*	23-1/4" x 84"H x 1/2"
TUS-EP96-*	23-1/4" x 96" x 1/2" end panel



BASE END SHELVES

All shelves are rounded at edge
Includes toe kick base

PART #
TUS-BOS12S-*



WALL OPEN SHELVES

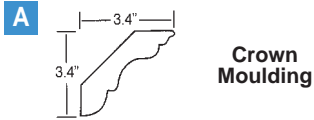
Top shelf is square to allow application of crown molding. All other shelves are rounded at edge.

PART #
TUS-WOS0630-*
TUS-WOS0642-*

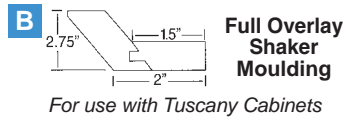
Soft Close Drawer Glides are available

Mouldings are finished to match cabinets

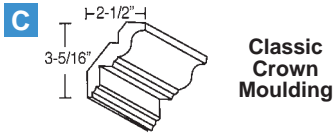
8 FT. MOULDINGS



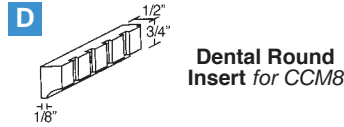
PART #
TUS-CMB8-*



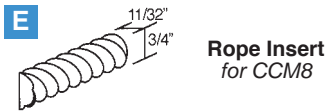
PART #
TUS-FSHM8-*



PART #
TUS-CCM8-*



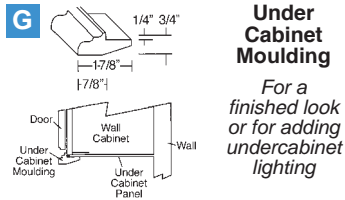
PART #
TUS-DM8-*



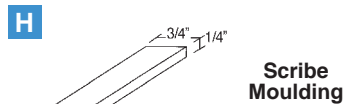
PART #
TUS-RM8-*



PART #
TUS-ED8-*



PART #
TUS-UCM8-*



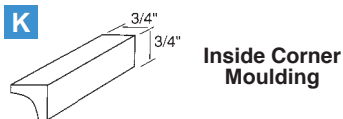
PART #
TUS-SCM8-*



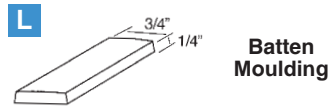
PART #
TUS-OCRM8-*



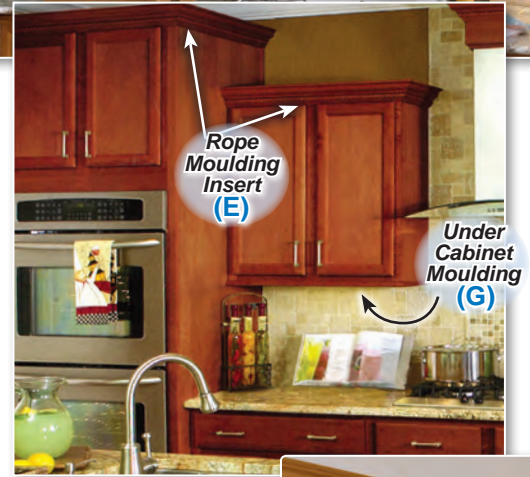
PART #
TUS-QRM8-*



PART #
TUS-ICRM8-*

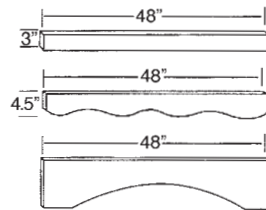


PART #
TUS-BTM8-*



VALANCES

4' long
Wood valances are 19mm (3/4") thick



PART #
TUS-VA48-
TUS-VAS48-
TUS-VA48-*



TOE KICK BOARD

1/8" thick
Wood toekicks are wood veneer in matching species and finish over plywood.
White toekicks comprise of Melamine laminated over plywood



PART #
TUS-TK8-*

Soft Close Drawer Glides are available



MANSFIELD RECESSED PANEL

Hazelnut and Merlot

- Traditional overlay with 1" reveal.
- 12mm (1/2") plywood drawer box with rabbet joint and screw construction
- Partial extension epoxy coated side mount drawer glides



HAZELNUT



MERLOT



CAMBRIDGE

Merlot and Toffee

- Full overlay with 1/4" reveal.
- Maple grain style: Squared raised panel with decorative moulding.
- 12mm solid wood rabbet joint with epoxy coated undermount drawer glides.



MERLOT



TOFFEE

AVAILABLE IN USA ONLY





RANDOLPH Oak Grain Finish

- Raised panel traditional overlay with 1" reveal.
- Amber color.
- Rabbet joint side mount



AMBER BASE
(Square only)



AMBER ARCHED WALL



AMBER SQUARE WALL



YORK White Finish

- Raised panel traditional overlay with 1" reveal.
- White color.
- Rabbet Joint and screw.
- Partial extension side mount.



WHITE BASE



WHITE WALL

AVAILABLE IN USA ONLY


PRE-ASSEMBLED KITCHEN CABINETRY

Customize your cabinets with our optional upgrades.
Enhance the look and functionality of your kitchen.



A WIDE SELECTION OF STORAGE SOLUTIONS & DECORATIVE COMPONENTS AVAILABLE!

★ DECORATIVE MOULDINGS

Crown rope dentil (shown), egg & dart available.

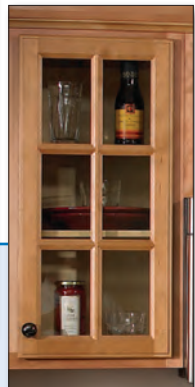


★ WINE RACK

- Natural maple interior.
- Lattice in matching exterior color.
- 4" openings for 11 or more wine bottles.
- Available in Franklin, Dover & Mansfield.

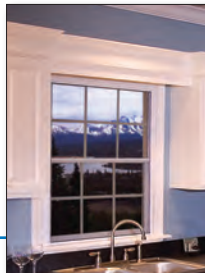


★ WOVEN WIRE GRILLES (SEE PAGES 508-515)



★ GLASS DOOR INSERTS (SEE PAGES 519-522)

Glass mullion doors available (selective sizes). Doors pre-opened for glass only. Glass and mounting clips not included.



★ WALL BLIND COVERS



★ PLATE RACK

- 30" wide cabinet holds 13 dishes.
- Natural maple interior.
- Dowels in matching exterior color.
- Available in Franklin, Dover & Mansfield.



★ DRAWER UNIT FOR DESK

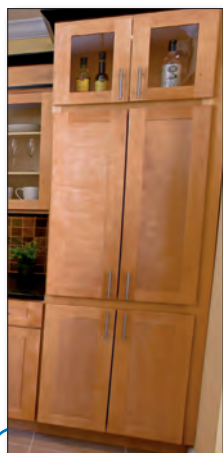


★ ROLL OUT DRAWERS

Drawer height is 4.13"



★ OVEN CABINET



★ PANTRY UNIT



★ SINK FRONT TIP OUT TRAYS

Includes one white plastic tray and hardware kit.



★ PULL OUT WASTE CONTAINERS

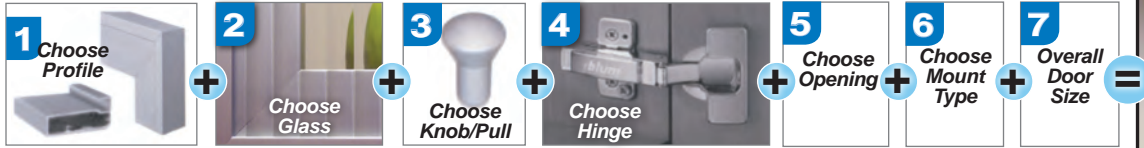
Trash bins are 36 quarts each and includes hardware. Separate hardware kit to mount door directly to trash bin.

AVAILABLE IN USA ONLY



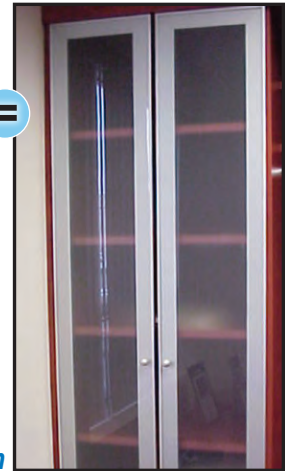
ALUMINUM FRAME GLASS DOORS

Beautiful Custom Doors in 7 Simple Steps!



PRODUCT FEATURES:

- No minimum order.
- Each door custom made to your H x W specifications (in 1/16" increments).
- Doors arrive fully assembled with glass inserts.
- Made in the USA and covered with a Limited Lifetime Warranty.
- Frame and Glass choices provide unlimited design potential.



Superior Craftsmanship Timeless Materials Distinctive Design

STEP 1: CHOOSE FRAME PROFILE FINISH

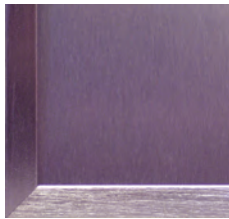
- Available in 2 anodized finishes: Natural Aluminum and Brushed Stainless Steel Look.
- Class I anodized finish insures against discoloration and is scratch resistant.
- Also available in 3 powdercoat finishes: Black, White & Oil Rubbed Bronze.

<p>A. AF001</p>   <p>3/4" (19mm) 13/16" (20.5mm)</p> <p><i>* REQUIRES SPECIAL NARROW ALUMINUM FRAME HINGE, (SUPPLIED UPON REQUEST).</i></p>	<p>B. AF002</p>   <p>2-1/8" (54mm) 5/16" (8mm) 13/16" (20.5mm)</p>	<p>C. AF003</p>   <p>2-1/8" (54mm) 13/16" (20.5mm)</p>	<p>D. AF004</p>   <p>1-3/4" (45mm) 9/16" (14mm) 13/16" (20.5mm)</p>
<p>E. AF005</p>   <p>1-3/4" (45mm) r = 2-1/32" (51.6mm) 13/16" (20.5mm)</p>	<p>F. AF006</p>   <p>1mm 1-3/4" (45mm) 13/16" (20.5mm)</p> <p><i>* Only available with acrylic opaque inserts</i></p> <p><i>Inserts (only available in Platinum Ice, Parapan & Zenolite) are permanently adhered to AF006 profile. Doors cannot be disassembled.</i></p>	<p>G. AF007</p>   <p>2-3/4" (70mm) 13/16" (20.5mm)</p>	<p>H. AF008</p>   <p>3/4" (19mm) 3/8" (9.5mm) 13/16" (20.5mm)</p>
<p>I. AF009</p>   <p>2 1/2" (63.5mm) 13/16" (20.5mm)</p>	<p>J. AF010</p>   <p>1 11/16" (42.8mm) 21/32" (16.4mm) 13/16" (20.5mm)</p>		

ALUMINUM FRAME GLASS DOORS

STEP 2: CHOOSE INSERT

METAL LAMINATE

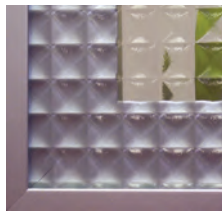


BRUSHED STAINLESS BSS



ANODIZED ALUMINUM AL

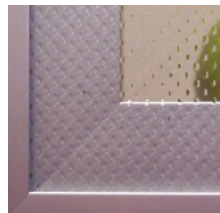
GLASS



AUSTRAL AG



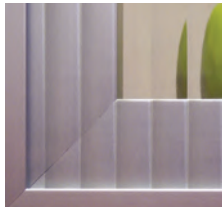
CLEAR CG



MASTERCARRE MC



BACKPAINTED
White, Black, Charcoal and custom colors available - PLEASE INQUIRE



REEDED RG



SATIN SG



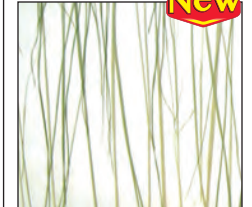
PLATINUM ICE ACRYLIC SS

- 5/32" thick tempered glass.
- All inserts come pre-installed in doors.
- Additional inserts available.

ARCHITECTURAL RESIN



THATCH

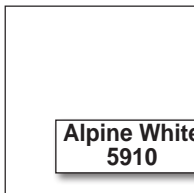


BEARGRASS

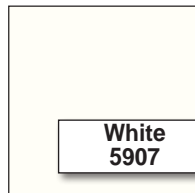
PARAPAN HIGH GLOSS OPAQUE INSERTS

SELLING FEATURES

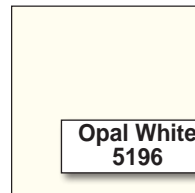
- High quality solid surface insert material UV and fade resistant.
- Water resistant.
- Easy to maintain.
- Environmentally friendly - no VOCs.
- Free of formaldehyde and plasticizers.
- Quick lead times.
- No minimum order quantities.
- 4mm thickness.



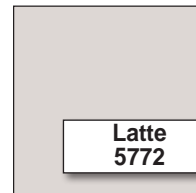
Alpine White 5910



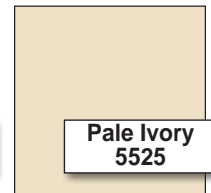
White 5907



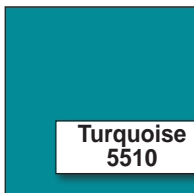
Opal White 5196



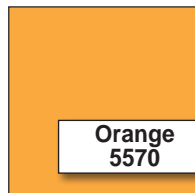
Latte 5772



Pale Ivory 5525



Turquoise 5510



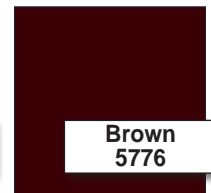
Orange 5570



Signal Red 5655

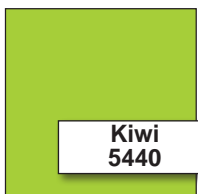


Oxide Red 5771



Brown 5776

18mm Parapan Doors NOW AVAILABLE
Please Inquire



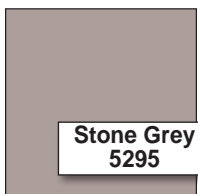
Kiwi 5440



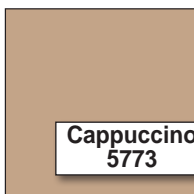
Cobalt Blue 5380



Black 5299



Stone Grey 5295



Cappuccino 5773



Light Grey 5290



STEP 3: KNOBS & PULLS

NATURAL ANODIZED ALUMINUM-SATIN FINISH

• Optional (May use your own)

KNOBS



K-001-AL

5/8"W x 13/16"H



K-005-AL

9/16"W x 7/8"H



K-006-AL

11/16"W x 5/16"H



K-007-AL

9/16"W x 7/8"H



K-008-AL

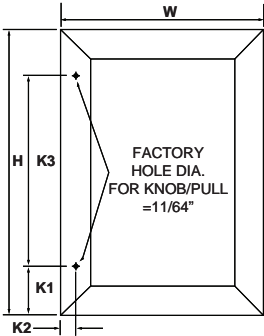
1"W x 1-1/16"H



K-009-AL

11/16"W x 1"H

PULLS



- Profiles AF002/AF002S and AF004/AF004S are pre-drilled for knobs/pulls.
- Profiles AF001/AF001S and AF003/AF003S should be drilled upon receipt.
- If purchasing optional knobs/pulls they will be packaged separately.
- All orders for AF002/AF002S and AF004/AF004S must include specifications for placement knobs/pulls if pre-drilling is desired.

Specify Knob or Pull:

K1 = (Knob or Pull) - (STANDARD: 2-1/2"), (MINIMUM: 1-1/4").

K2 = (Knob or Pull) - (STANDARD: centered on frame).

K3 = (Pulls only) - (center to center for pulls).

PART #	OVERALL LENGTH	CENTER TO CENTER
P-001-7-AL	7-3/8"	5"
P-001-9-AL	9-13/16"	7-1/2"
P-001-12-AL	12-3/16"	9-13/16"
P-001-17-AL	17-5/16"	14-15/16"
P-001-27-AL	27-9/16"	25-3/16"
P-001-37-AL	37"	34-5/8"

STEP 4: HINGES

• Optional (May use your own)

NARROW ALUMINUM FRAME HINGE



H73-T120

For AF001 frame profile

(Included in quote when requested)

120° + 35mm CUP HINGE



H71-T120

For all other frame profiles

(Included in quote when requested)

Maximum cup depth = 12mm (.472")

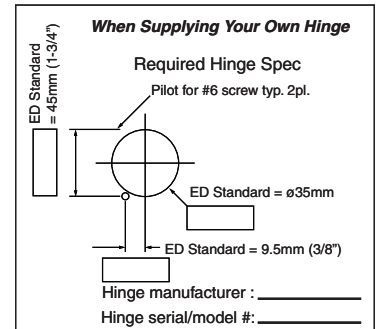
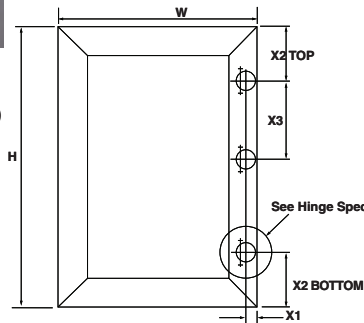
X1 = (STANDARD: 7/8).

X2 TOP = (STANDARD: 3-1/2"), (MINIMUM: 3").

X2 BOTTOM = (STANDARD: 3-1/2"), (MINIMUM: 3").

X3 = (Additional hinge may be required for oversize doors. Will determine at factory and advise).

- Profile AF001/AF001S requires use of a narrow aluminum frame hinge.
- All other profiles may use a 120° + 35mm Cup Hinge.
- All doors will be pre-bored for hinges.
- If purchasing optional hinges, the appropriate components will be attached to the door and remaining components will be packaged separately.
- All orders must include specifications for placement of hinges.
- If supplying your own hinges, orders must include the hinge manufacturer, model number and boring patterns.



STEP 5: OPENING

- Must advise if cabinet will open to: Left (L), Right (R), Up (U), Drawer (D)

STEP 6: MOUNT TYPE

- Must specify: Wall Mount (W) or Base Mount (B)

STEP 7: DOOR SIZES

- Advise the overall dimensions (H x W) of each door required.