

2014



***CASTERS, LEGS, LEVELERS & GLIDES***

# CASTERS, LEGS, LEVELERS & GLIDES

Pgs. 219-262



Hooded Twin Wheel



Ball Transfer

## CASTERS



Solid Brass



NSF®



Summit



Imported

Appliance



## LEVELERS



Self Leveling



Metal Base



Felt Bottom



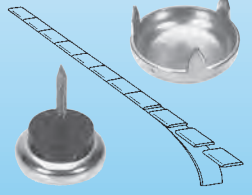
Plastic Base

## Threaded Inserts



Case Feet

## Glides



## LEGS



Cast Aluminum (for Furniture)



Appliance (NSF®)



Metal (for Furniture)



28" Table Leg

## Insert Cap Glides



Table Bases (Cast Iron & Steel)

CASE FEET .....	253
CASTER INSERTS (Threaded).....	246
CASTER SOCKETS .....	239
<b>CASTERS</b>	
<i>Furniture</i>	
Ball Caster (Hooded & Non-Hooded) .....	225
Ball Transfer .....	226-227
Solid Brass .....	224
Twin Wheel (Hooded & Non-Hooded) .....	219-223
<i>Industrial</i>	
B7/B9 Plate.....	234
Dura Foam.....	235
Imported (Friction Ring, Threaded Stem, Small Plate) .....	228-229
Imported (Large Plate).....	233
Institutional .....	236-237
NSF®.....	231
Rockite.....	232
Ruberex.....	232
Summit .....	230
TRP Plate Series.....	238

<b>CASTERS</b>	
<i>Specialty</i>	
Appliance.....	224
Dual Wheel (Piano) .....	224
<b>GLIDES</b>	
Adhesive Glide Strip.....	245
Nail Glides .....	244
Staple Glide.....	245
Stud Button.....	245
<b>INSERT CAP GLIDES</b>	
Chrome Plated (ABS).....	249
Colors (ABS Square & Round) .....	250
Colors (ABS Rectangular) .....	251
Metal Spring (NP).....	252
Multi Gauge Insert Caps.....	252
Tube Enclosures.....	249-252
<b>LEGS</b>	
Appliance Legs (NSF®).....	259
Bun Feet (Round).....	260
Bun Feet (Square).....	261
Furniture Legs	

<b>LEGS</b>	
Cast Aluminum .....	258
Metal (Various Heights) .....	256-257
Plastic (Various Heights) .....	256
Table Legs	
6" & 16".....	255
28" .....	254-255
Cast Aluminum .....	254
<b>LEVELERS</b>	
Concealed .....	243
Felt Bottom .....	242
Levelers w/Bracket .....	241
Plastic & Metal.....	240-241
Self Leveling .....	242
<b>TABLE BASES (Steel &amp; Cast Iron) .....</b>	<b>262</b>
<b>THREADED INSERTS</b>	
Double Star.....	246
Grater Clip .....	248
Plastic Insert.....	248
Tee Nut .....	248
Threaded Metal Inserts (Round & Square).....	247

SEE PAGES 1007-1023 FOR A - Z INDEX

# HOODED TWIN WHEEL SERIES

**75** LOAD **100**  
**lbs** TO **lbs**  
**CAPACITY**  
 PER CASTER

## SAMSON (2") & HERCULES (2-3/8")



**2"**



BLACK



CHROME

ALSO AVAILABLE  
WITH BRAKE



**2 3/8"**



BLACK



CHROME

ALSO AVAILABLE  
WITH BRAKE



### TOP PORTIONS AVAILABLE

<p><b>#(1)</b> TOP PLATE</p> <p>3/16" HOLE DIA.</p>	<p><b>#(2)</b> 5/16" x 1-1/2" LONG GRIPNECK</p> <p>COMES WITH SOCKET FOR WOOD</p>	<p><b>#(3)</b> 1/4-20 x 1/2" THREAD</p> <p><b>#(4)</b> 1/4-20 x 1" THREAD</p>	<p><b>#(6)</b> 5/16-18 x 3/4" THREAD</p> <p><b>#(7)</b> 5/16-18 x 1" THREAD</p> <p><b>#(8)</b> 5/16-18 x 1-1/2" THREAD</p>	<p><b>#(10)</b> 3/8-16 x 1" THREAD</p>	<p><b>#(11)</b> 3/8" x 1" FRICTION</p> <p><b>#(13)</b> 7/16" x 7/8" FRICTION</p> <p><b>#(14)</b> 7/16" x 1-3/8" FRICTION</p>	<p><b>#(16)</b> </p> <p>FITS 3/4" BOARD</p> <p>U-CLIP</p>
---	---	---	--	--	--	---

### SAMSON - 2" Diameter

PART #	HOOD FINISH
SAMS*-BK	Black
SAMS*-CHR	Chrome

### SAMSON - 2" Diameter w/BRAKE

PART #	HOOD FINISH
SAMS*-BK-BRK	Black
SAMS*-CHR-BRK	Chrome

### HERCULES - 2-3/8" Diameter

PART #	HOOD FINISH
HERC*-BK	Black
HERC*-CHR	Chrome

### HERCULES - 2-3/8" Diameter w/BRAKE

PART #	HOOD FINISH
HERC*-BK-BRK	Black
HERC*-CHR-BRK	Chrome

\* Please use above chart to determine required top portion

CASTER SPECIFICATIONS:	SAMSON (2")	HERCULES (2-3/8")
Mounting Height With Top Plate	2-9/16"	3"
Mounting Height with Threaded & Friction Ring Stems	2-5/16"	2-11/16"
Swivel Radius Without Brake	1-3/4"	2-3/16"
Swivel Radius With Brake	2-1/8"	2-7/8"

SEE PAGE 248 FOR METAL THREADED INSERTS AND PAGES 246-247 FOR METAL THREADED STARTYPES

# BLACK NON-HOODED NYLON TWIN WHEELS

## MITY MITE SERIES



### PRODUCT FEATURES:

- All nylon construction provides high load ratings and durability.
- Sleek and contemporary rounded wheel design.
- Riveted axle for positive wheel retention, (4" & 5").

### THREADED STEM

### FRICITION RING STEM



### IDEALLY SUITED FOR:

STORE FIXTURES, DISPLAYS, MEDICAL EQUIPMENT,  
UTILITY CARTS, FURNITURE AND OFFICE EQUIPMENT.

### SWIVEL TOP PLATE MODELS:

WHEEL DIAMETER	PART #	LOAD CAPACITY	MOUNTING HEIGHT	SWIVEL RADIUS	TOP PORTION	PCS. PER CARTON
1-1/2"	MML2-1	65 lbs.	2"	1-1/4"	Top Plate: 1-1/2" Sq. Mounting Hole: 1" x 1" Spacing	120
2"	MML3-1	88 lbs.	2-7/16"	1-3/4"		120
3"	MM35-1	150 lbs.	3-7/16"	2-1/2"		120
4"	MML4-1	175 lbs.	4-5/8"	3-5/8"		40
5"	MML5-1	180 lbs.	5-5/8"	4-1/2"		20
<b>WITH BRAKE</b>						
WHEEL DIAMETER	PART #	LOAD CAPACITY	MOUNTING HEIGHT	SWIVEL RADIUS	TOP PORTION	PCS. PER CARTON
2"	MML3BR-1	88 lbs.	2-7/16"	2-1/8"	Top Plate: 1-1/2" Sq. Mounting Hole: 1" x 1" Spacing	120
3"	MM35BR-1	150 lbs.	3-7/16"	3-1/8"		120
4"	MML4BR-1	175 lbs.	4-5/8"	4-1/2"		40
5"	MML5BR-1	180 lbs.	5-5/8"	5-1/8"		20
<b>WITH BRAKE</b>						
WHEEL DIAMETER	PART #	LOAD CAPACITY	MOUNTING HEIGHT	SWIVEL RADIUS	TOP PORTION	PCS. PER CARTON
2"	MML3BR-6	88 lbs.	2-1/4"	2-1/8"	5/16-18 x 3/4" Long	120
3"	MM35BR-10	150 lbs.	3-1/4"	3-1/8"		120
4"	MML4BR-10	175 lbs.	4-3/8"	4-1/2"		40
5"	MML5BR-18	180 lbs.	5-7/16"	5-1/8"		20
<b>WITH BRAKE</b>						
WHEEL DIAMETER	PART #	LOAD CAPACITY	MOUNTING HEIGHT	SWIVEL RADIUS	TOP PORTION	PCS. PER CARTON
2"	MML3BR-6	88 lbs.	2-1/4"	2-1/8"	5/16-18 x 3/4" Long	120
3"	MM35BR-10	150 lbs.	3-1/4"	3-1/8"		120
4"	MML4BR-10	175 lbs.	4-3/8"	4-1/2"		40
5"	MML5BR-18	180 lbs.	5-7/16"	5-1/8"		20
<b>WITH BRAKE</b>						

### THREADED STEM MODELS:

WHEEL DIAMETER	PART #	LOAD CAPACITY	MOUNTING HEIGHT	SWIVEL RADIUS	TOP PORTION	PCS. PER CARTON
1-1/2"	MML2-6	50 lbs.	2"	1-1/2"	5/16-18 x 3/4" Long	120
2"	MML3-6	88 lbs.	2-1/4"	1-3/4"	5/16-18 x 3/4" Long	120
3"	MM35-10	150 lbs.	3-1/4"	2-1/2"	3/8-16 x 1" Long	120
4"	MML4-10	175 lbs.	4-3/8"	3-5/8"	3/8-16 x 1" Long	40
5"	MML5-18	180 lbs.	5-7/16"	4-1/2"	1/2-13 x 1" Long	20
<b>WITH BRAKE</b>						
WHEEL DIAMETER	PART #	LOAD CAPACITY	MOUNTING HEIGHT	SWIVEL RADIUS	TOP PORTION	PCS. PER CARTON
2"	MML3BR-6	88 lbs.	2-1/4"	2-1/8"	5/16-18 x 3/4" Long	120
3"	MM35BR-10	150 lbs.	3-1/4"	3-1/8"		120
4"	MML4BR-10	175 lbs.	4-3/8"	4-1/2"		40
5"	MML5BR-18	180 lbs.	5-7/16"	5-1/8"		20
<b>WITH BRAKE</b>						

### FRICITION RING STEM MODELS:

WHEEL DIAMETER	PART #	LOAD CAPACITY	MOUNTING HEIGHT	SWIVEL RADIUS	TOP PORTION	PCS. PER CARTON
2"	MML3-13	88 lbs.	2-1/4"	1-3/4"	7/16 x 7/8" Friction Ring Stem	120
	MML3BR-13			2-1/8"	7/16 x 7/8" Friction Ring Stem w/ Brake	

SEE PAGE 248 FOR METAL THREADED INSERTS AND PAGES 246-247 FOR METAL THREADED STARTYPES  
OTHER TOP FITTINGS AVAILABLE, PLEASE INQUIRE

# BLACK NON-HOODED DIECAST TWIN WHEELS



## PRODUCT FEATURES:

- Rounded nylon wheels with zinc diecast body provides a greater load rating than typical 2" twin wheels.
- Exceeds BIFMA/ANSI test requirements.



**IDEALLY SUITED FOR:  
STORE FIXTURES, DISPLAYS, ELECTRONIC EQUIPMENT,  
MEDICAL EQUIPMENT AND OFFICE EQUIPMENT.**

### SWIVEL TOP PLATE MODELS:

WHEEL DIAMETER	PART #	LOAD CAPACITY	MOUNTING HEIGHT	SWIVEL RADIUS	TOP PORTION	MOUNTING HOLES	PCS. PER CARTON
2"	MM3-1	110 lbs.	2-11/32"	1-3/4"	1-1/2" Square Top Plate	1" x 1" Spacing	120
	MM3BR-1			2-1/8"	1-1/2" Square Top Plate w/ Brake		

### THREADED STEM MODELS:

WHEEL DIAMETER	PART #	LOAD CAPACITY	MOUNTING HEIGHT	SWIVEL RADIUS	TOP PORTION	PCS. PER CARTON
2"	MM3-6	110 lbs.	2-3/16"	1-3/4"	5/16-18 x 3/4" Long	120
	MM3-10				3/8-16 x 1" Long	
2"	MM3BR-6	110 lbs.	2-3/16"	2-1/8"	5/16-18 x 3/4" Long w/ Brake	120
	MM3BR-10				3/8-16 x 1" Long w/ Brake	

### FRICITION RING STEM MODELS:

WHEEL DIAMETER	PART #	LOAD CAPACITY	MOUNTING HEIGHT	SWIVEL RADIUS	TOP PORTION	PCS. PER CARTON
2"	MM3-13	110 lbs.	2-3/16"	1-3/4"	7/16 x 7/8" Friction Ring Stem	120
	MM3BR-13			2-1/8"	7/16 x 7/8" Friction Ring Stem w/ Brake	

SEE PAGE 207 FOR METAL THREADED INSERTS AND PAGES 208-209 FOR METAL THREADED STARTYPES  
OTHER TOP FITTINGS AVAILABLE, PLEASE INQUIRE

# LOW PROFILE & EXTRA WIDE NYLON TWIN WHEELS

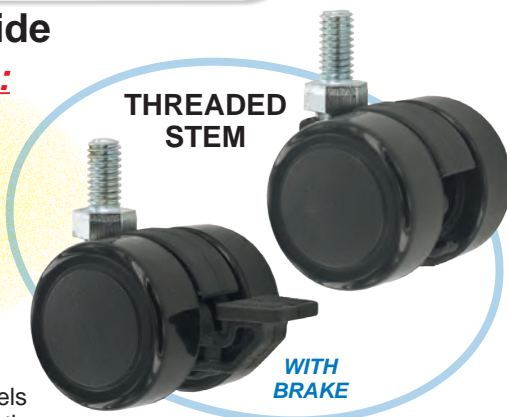
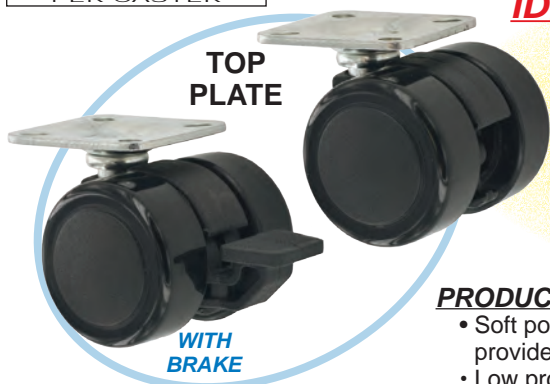
## 1-1/2" Diameter x 2" Wide

**IDEALLY SUITED FOR:**

**MEDICAL EQUIPMENT,  
STORE FIXTURES,  
DISPLAYS,  
OFFICE EQUIPMENT,  
AND ELECTRONIC  
EQUIPMENT.**

**PRODUCT FEATURES:**

- Soft polyurethane tread with nylon wheels provide a cushioned ride and quiet operation.
- Low profile and easy to conceal.
- High load rating provides great strength at an affordable cost.

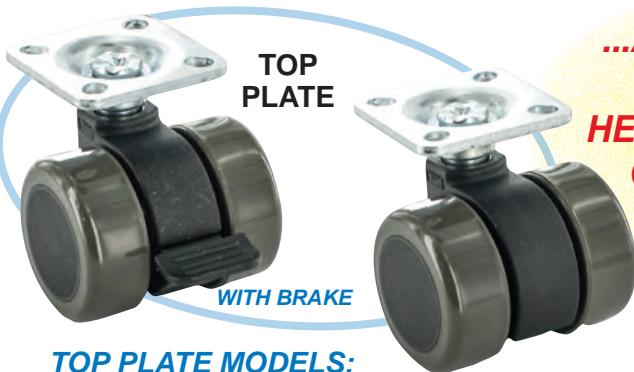


**TOP PLATE MODELS:**

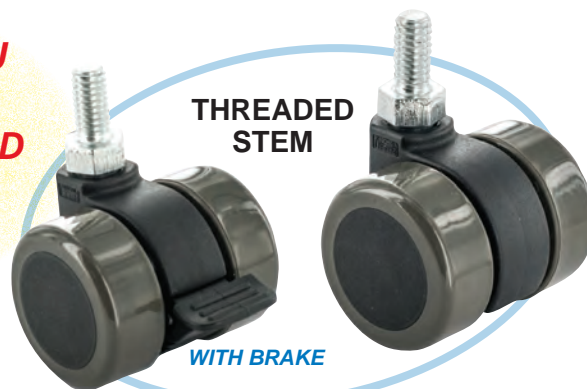
WHEEL DIAMETER	PART #	LOAD CAPACITY	MOUNTING HEIGHT	SWIVEL RADIUS	DESCRIPTION
1-1/2" x 2" Wide	MMW2-1	110 lbs.	1-3/4"	1-11/16"	1-1/2" Dia. Mity Mite Wide Twinwheel. 1-1/2" Sq. Top Plate w/1" Sq. Mounting Hole - Black
	MMW2BR-1	110 lbs.	1-3/4"	1-11/16"	1-1/2" Dia. Mity Mite Wide Twinwheel w/Brake. 1-1/2" Sq. Top Plate w/1" Sq. Mounting Hole - Black

**THREADED STEM MODELS:**

WHEEL DIAMETER	PART #	LOAD CAPACITY	MOUNTING HEIGHT	SWIVEL RADIUS	DESCRIPTION
1-1/2" x 2" Wide	MMW2-6	110 lbs.	1-5/8"	1-11/16"	1-1/2" Dia. Mity Mite Wide Twinwheel. 5/16-18 x 5/8" Long Threaded Stem - Black
	MMW2BR-6	110 lbs.	1-5/8"	1-11/16"	1-1/2" Dia. Mity Mite Wide Twinwheel w/Brake. 5/16-18 x 5/8" Long Threaded Stem w/Brake - Black



**...AND IF YOU  
NEED A  
HEAVIER LOAD  
CAPACITY**



**TOP PLATE MODELS:**

WHEEL DIAMETER	PART #	LOAD CAPACITY	MOUNTING HEIGHT	SWIVEL RADIUS	DESCRIPTION
1-1/2" x 2" Wide	MMW2X-1	150 lbs.	2.05"	1.85"	1-1/2" Dia. Mity Mite Wide Twinwheel. 1-1/2" Sq. Top Plate w/1" Sq. Mounting Hole - Black
	MMW2XBR-1	150 lbs.	2.05"	1.85"	1-1/2" Dia. Mity Mite Wide Twinwheel w/Brake. 1-1/2" Sq. Top Plate w/1" Sq. Mounting Hole - Black

**THREADED STEM MODELS:**

WHEEL DIAMETER	PART #	LOAD CAPACITY	MOUNTING HEIGHT	SWIVEL RADIUS	DESCRIPTION
1-1/2" x 2" Wide	MMW2X-6	150 lbs.	1-7/8"	1.85"	1-1/2" Dia. Mity Mite Wide Twinwheel. 5/16-18 x 5/8" Long Threaded Stem - Black
	MMW2XBR-6	150 lbs.	1-7/8"	1.85"	1-1/2" Dia. Mity Mite Wide Twinwheel w/Brake. 5/16-18 x 5/8" Long Threaded Stem w/Brake - Black

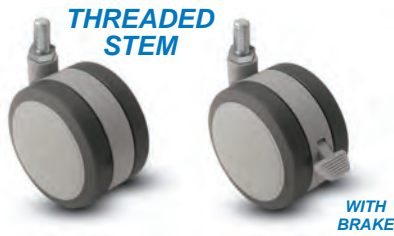
**SEE PAGE 248 FOR METAL THREADED INSERTS AND PAGES 246-247 FOR METAL THREADED STARTYPES  
OTHER TOP FITTINGS AVAILABLE, PLEASE INQUIRE**

# INSTITUTIONAL TWIN WHEELS

**75** LOAD TO **100**  
lbs TO lbs.  
**CAPACITY**  
PER CASTER



**SOFTECH**



**PRODUCT FEATURES:**

- Soft tread gray thermoplastic elastomer twin wheel provides a quiet cushioned ride.
- This 2-toned gray twin wheel provides an attractive and stylish look while supporting a heavy load.
- Ideal for all hospital/medical equipment and furniture or wherever you want style and strength.

**SWIVEL OPTIONS:**

WITHOUT BRAKE	WHEEL DIAMETER	PART #	LOAD CAPACITY	MOUNTING HEIGHT	SWIVEL RADIUS	TOP PORTION	MOUNTING HOLE SPACING	PCS. PER CARTON
	<b>2"</b>	MMI2-10	75 lbs.	2-1/4"	1-13/16"	3/8-16 x 1" Threaded Stem	-	100
		MMI2-13		2-1/4"		7/16 x 7/8" Friction Ring Stem	-	
		MMI2-1		2-3/8"		1-1/2" Square Top Plate	1" x 1"	
	<b>2-3/8"</b>	MMI28-10	100 lbs.	2-5/8"	2-1/16"	3/8-16 x 1" Threaded Stem	-	100
		MMI28-13		2-5/8"		7/16 x 7/8" Friction Ring Stem	-	
		MMI28-1		2-3/4"		1-1/2" Square Top Plate	1" x 1"	
WITH BRAKE	WHEEL DIAMETER	PART #	LOAD CAPACITY	MOUNTING HEIGHT	SWIVEL RADIUS	TOP PORTION	MOUNTING HOLE SPACING	PCS. PER CARTON
	<b>2"</b>	MMI2BR-10	75 lbs.	2-1/4"	2-3/8"	3/8-16 x 1" Threaded Stem	-	100
		MMI2BR-13		2-1/4"		7/16 x 7/8" Friction Ring Stem	-	
		MMI2BR-1		2-3/8"		1-1/2" Square Top Plate	1" x 1"	
	<b>2-3/8"</b>	MMI28BR-10	100 lbs.	2-5/8"	2-1/2"	3/8-16 x 1" Threaded Stem	-	100
		MMI28BR-13		2-5/8"		7/16 x 7/8" Friction Ring Stem	-	
		MMI28BR-1		2-3/4"		1-1/2" Square Top Plate	1" x 1"	

**175** LOAD TO **220**  
lbs TO lbs.  
**CAPACITY**  
PER CASTER

## TOTAL LOCKING SOFT RIDE

**PRODUCT FEATURES:**

- Gray soft polyurethane tread with nylon construction provides a quiet and cushioned ride.
- Total locking brake option will securely lock the wheel and top portion when engaged.
- Sleek design and superior mobility rating - Best on the market!
- Ideal for electronic equipment, medical equipment, store fixtures and furniture.



**SWIVEL OPTIONS:**

WITHOUT BRAKE	WHEEL DIAMETER	PART #	LOAD CAPACITY	MOUNTING HEIGHT	SWIVEL RADIUS	TOP PORTION	MOUNTING HOLE SPACING	PCS. PER CARTON
	<b>3"</b>	MMI35-1	175 lbs.	3-7/8"	2-1/4"	2-3/4" x 2-5/16" Top Plate	1-21/32" x 2-5/32"	120
		MMI35-18		3-9/16"		1/2"-13 x 1" Long Threaded Stem	-	
		MMI4-1		5-1/4"		2-3/4" x 2-5/16" Top Plate	1-3/4" x 2-29/32"	
	<b>4"</b>	MMI4-18	220 lbs.	5"	3-1/16"	1/2"-13 x 1" Long Threaded Stem	-	120
		MMI35BR-1		3-7/8"		2-3/4" x 2-5/16" Top Plate	1-21/32" x 2-5/32"	
		MMI35BR-18		3-9/16"		1/2"-13 x 1" Long Threaded Stem	-	
	<b>3"</b>	MMI4BR-1	175 lbs.	5-1/4"	3-3/4"	2-3/4" x 2-5/16" Top Plate	1-3/4" x 2-29/32"	120
		MMI4BR-18		5"		1/2"-13 x 1" Long Threaded Stem	-	

**SEE PAGE 248 FOR METAL THREADED INSERTS AND PAGES 246-247 FOR METAL THREADED STARTYPES  
OTHER TOP FITTINGS AVAILABLE, PLEASE INQUIRE**

# MISCELLANEOUS CASTERS



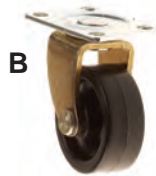
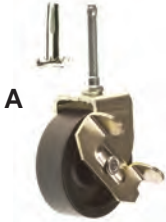
## HIGH IMPACT STYRENE WHEEL CASTERS

WITH 5/16" x 1-1/2" LONG SOCKET STEMS

- Brass
- Dependable
- Long Lasting
- Supplied With Metal Sockets
- Sturdy
- Economical
- Black Wheels

WITH TOP PLATE

- Black
- Dupont Nylon Thrust Bearing For Silent Swivel Action



PART #	FINISH	DESCRIPTION
<b>A 231-71-2WB</b>	Brass	2" Dia. x 3/4" Wide w/Brake 45 Lbs. Load Capacity
<b>B 161-71-T.P.</b>	Brass w/Black Wheel	1-5/8" Dia. x 5/8" Wide 35 Lbs. Load Capacity



## SOLID BRASS CASTERS

### ROUND CUP

Wheel diameter - 1.08"  
Cup I.D. - Tapers from 1-1/4" to 1-1/8"  
Cup Height is 1.22"



**PART #**  
**BRC-32-BC**

Wheel diameter - 1.46"  
Cup I.D. - Tapers from 1-1/2" to 1-1/4"  
Cup Height is 1.38"



**PART #**  
**BRC-48-BC**

### SQUARE CUP

Wheel diameter - 1.08"  
Cup I.D. - Tapers from 1-1/8" to 1"  
Cup Height is 1-1/4"



**PART #**  
**BSC-32-AB**  
**BSC-32-BB**  
**BSC-32-PB**

Wheel diameter - 1.46"  
Cup I.D. - Tapers from 1-1/8" to 1"  
Cup Height is 1.63"



**PART #**  
**BSC-48-AB**  
**BSC-48-BB**  
**BSC-48-PB**  
**BSC-48-BC**

**Antique Brass = AB, Brushed Brass = BB  
Polished Brass = PB, Brushed Chrome = BC**

## LOW PROFILE CASTERS



Great For Small Appliances, Luggage, and Displays.

Polypropylene Wheels w/ Steel Construction - NON-SWIVEL & RIVETED

PART #	WHEEL COLOR	WHEEL DIA.	TREAD	OVERALL HEIGHT	LOAD CAPACITY PER CASTER
<b>LPC-23</b>	White	1"	1/2"	1-3/8"	15 lbs.
<b>LPC-21</b>	White	1-1/4"	1/2"	1-1/2"	20 lbs.

## DUAL WHEEL APPLIANCE CASTER

Designed for rolling refrigerators, dishwashers and other heavy appliances in the home or office.



### SPECIFICATIONS:

Wheel Size: 7/8" Dia. x 1 1/2" Wide  
Rig Dimensions: 1-3/4"L x 1-1/2"W x 1-1/8"H  
Color: White Only  
Material: Polypropylene  
Load Rating: 800 Lbs. Per Set Of 2  
Mounting Height: 1-5/16"  
Top Portion: 5/16-18 x 7/8" Long Threaded Stem w/Hex Nut  
Rig: Heavy Duty Zinc Plated Steel

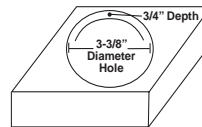
**#APL78**  
(50 SETS PER CARTON)

## LOW PROFILE SPRING CUP CASTER

Ideal For: Display counters, T.V. stands, furniture, kitchen counters and island



Caster is recessed



"The Floater"

### SPECIFICATIONS:

Overall Height: 3/4"  
Wheel Material: Nylon  
Overall Rim Diameter: 4-3/32"  
Insert Dimension: 3/4"  
Turning Radius: 360°

### PRODUCT FEATURES:

- **Super Load Capacity:** 165 lbs. per caster.
- **Recessed Mounting Design:** Drill a 3-3/8" diameter hole with a depth of 3/4".
- **Easy Installation:** Push the spring cup caster into the hole until it is flush with mounting flange.
- Metal teeth mesh with the wood, particle board or other material. For extra security, there are 3 holes for screws.



**#LPSC-75N**

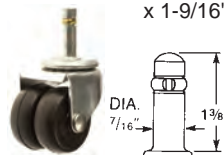
## DUAL WHEEL CASTERS

2" DIA. x 7/8" WIDE • 160 LBS. TO 200 LB. LOAD CAPACITY  
• ZINC FINISH CASTERS • WITH RUBEREX & POLYPROPYLENE WHEELS

PART #	WHEEL MATERIAL	LOAD CAPACITY PER CASTER	MOUNTING HEIGHT
<b>EW459-2</b>	Ruberex	160 lbs.	2-23/32"
<b>EP459-2</b>	Ruberex	160 lbs.	2-27/32"
<b>EP659-2</b>	Polypropylene	200 lbs.	2-27/32"

### EW459-2

Bore Dimension: 29/64" Dia.  
x 1-9/16" Deep



### EP459-2

Top Plate: 2-9/16" x 3-5/8"  
Bolt Holes: 1-3/4" x 2-7/8" to 3"



### EP659-2

Top Plate: 2-9/16" x 3-5/8"  
Bolt Holes: 1-3/4" x 2-7/8" to 3"

### Socket Bore:

9/16" x 1-1/2" Deep  
2-1/8" Dia. Trackplate



**98B**  
SOCKETS



# 1-1/2" & 2" PVC BALL CASTER



• 1-1/2" & 2" Hooded

• Brite Chrome or Antique Brass Finish • 4 Top Portions Available

## MEDALLION



WHEEL DIAMETER	PART #	FINISH	LOAD CAPACITY SET OF 4	MOUNTING HEIGHT	TOP PORTION	SETS PER CARTON
1-1/2"	MEDALLION-40CHR	Brite Chrome	300 lbs.	2-1/4"	2" x 1-3/16" Rectangular Top Plate, with 1-5/8" x 7/8" Bolt Holes	25
	MEDALLION-40BRS	Antique Brass		2-1/4"		
2"	MEDALLION-CHR	Brite Chrome	400 lbs.	2-5/8"		
	MEDALLION-BRS	Antique Brass		2-5/8"		

## NEPTUNE



WHEEL DIAMETER	PART #	FINISH	LOAD CAPACITY SET OF 4	MOUNTING HEIGHT	TOP PORTION	SETS PER CARTON
1-1/2"	NEPTUNE-40CHR	Brite Chrome	300 lbs.	2-3/16"	7/16" x 1-3/8" Long Friction Ring Stem	25
	NEPTUNE-40BRS	Antique Brass		2-3/16"		
2"	NEPTUNE-CHR	Brite Chrome	400 lbs.	2-1/2"		
	NEPTUNE-BRS	Antique Brass		2-1/2"		

## REGENCY



WHEEL DIAMETER	PART #	FINISH	LOAD CAPACITY SET OF 4	MOUNTING HEIGHT	TOP PORTION	SETS PER CARTON
1-1/2"	REGENCY-40CHR	Brite Chrome	300 lbs.	2-1/8"	5/16" x 1-1/2" Long Gripneck Stem With Metal Sockets	25
	REGENCY-40BRS	Antique Brass		2-1/8"		
2"	REGENCY-CHR	Brite Chrome	400 lbs.	2-1/2"		
	REGENCY-BRS	Antique Brass		2-1/2"		

## MAGNUM



WHEEL DIAMETER	PART #	FINISH	LOAD CAPACITY SET OF 4	MOUNTING HEIGHT	TOP PORTION	SETS PER CARTON
1-1/2"	MAGNUM-40CHR	Brite Chrome	300 lbs.	2-1/4"	5/16-18 x 1" Long Threaded Stem	25
	MAGNUM-40BRS	Antique Brass		2-1/4"		
2"	MAGNUM-CHR	Brite Chrome	400 lbs.	2-1/2"		
	MAGNUM-BRS	Antique Brass		2-1/2"		

# SATELLITE SERIES METAL BALL CASTERS



50MM Metal

Brite Brass, Brite Chrome, Satin Chrome or Windsor Antique Finish • 3 Top Portions Available

## MALIBU

Shown in  
Brite Chrome



PART #	FINISH	LOAD CAPACITY PER PC.	MOUNTING HEIGHT	TOP PORTION
MALIBU-BB	Brite Brass	75 lbs.	2-3/16"	5/16" x 1-1/2" Long Gripneck Stem Supplied With Gripneck Sleeves
MALIBU-BC	Brite Chrome			
MALIBU-SC	Satin Chrome			
MALIBU-WA	Windsor Antique			

## MADRID

Shown in  
Windsor Antique



PART #	FINISH	LOAD CAPACITY PER PC.	MOUNTING HEIGHT	TOP PORTION
MADRID-BB	Brite Brass	75 lbs.	2-1/2"	1-1/2" Square Top Plate, with 1" x 1" Bolt Holes
MADRID-BC	Brite Chrome			
MADRID-SC	Satin Chrome			
MADRID-WA	Windsor Antique			

## MILAN

Shown in  
Brite Brass



PART #	FINISH	LOAD CAPACITY PER PC.	MOUNTING HEIGHT	TOP PORTION
MILAN-BB	Brite Brass	75 lbs.	2-5/16"	5/16" x 1" Long Threaded Stem
MILAN-BC	Brite Chrome			
MILAN-SC	Satin Chrome			
MILAN-WA	Windsor Antique			

# BALL CASTER/TRANSFERS



**APPLICATIONS:** Furniture, Conveyor Transfer Tables, Store Fixtures & Displays, Computer Equipment.

**OPTIONS:**

- Carbon Steel Ball w/Carbon Steel Housing or Nylon Ball w/Carbon Steel Housing.
- High load ratings, although small in size.
- Able to move in all directions.
- Can be used as a caster or inverted as a ball transfer.



## ROUND FLANGE

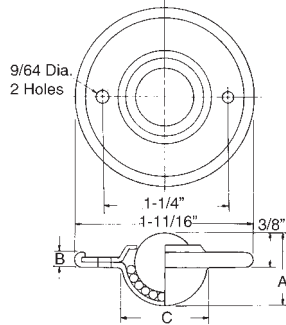
Carbon Steel



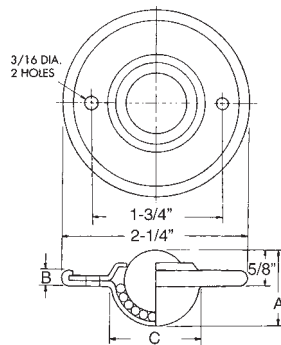
Nylon



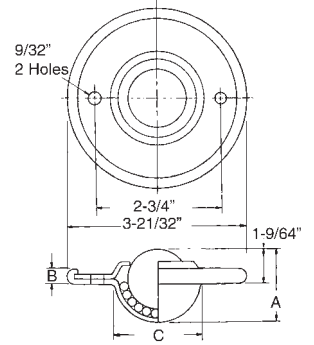
HBCCRF-20/HNBCCRF-20



HBCCRF-32/HNBCCRF-32



HBCCRF-48/HNBCCRF-48



**NYLON BALL OFFERS SUPERIOR FLOOR PROTECTION**

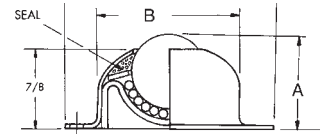
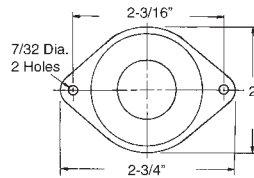
PART #	BALL MATERIAL	BALL SIZE	STATIC LOAD CAPACITY	MOBILITY LOAD	A	B	C	PLATE	HOLE SPACING	SCREW HOLE
HBCCRF-20	Carbon Steel	5/8"	20 lbs.	6 lbs.	3/4"	5/32"	31/32"	1-11/16"	1-1/4"	9/64"
HNBCCRF-20	Nylon	5/8"	10 lbs.	3 lbs.	3/4"	5/32"	31/32"	1-11/16"	1-1/4"	9/64"
HBCCRF-32	Carbon Steel	1"	75 lbs.	25 lbs.	1-7/32"	3/16"	1-1/2"	2-1/4"	1-3/4"	3/16"
HNBCCRF-32	Nylon	1"	40 lbs.	13 lbs.	1-7/32"	3/16"	1-1/2"	2-1/4"	1-3/4"	3/16"
HBCCRF-48	Carbon Steel	1-1/2"	200 lbs.	66 lbs.	1-13/16"	9/32"	2"	3-21/32"	2-3/4"	9/32"
HNBCCRF-48	Nylon	1-1/2"	100 lbs.	33 lbs.	1-13/16"	9/32"	2"	3-21/32"	2-3/4"	9/32"

## OBLONG FLANGE

Carbon Steel



Nylon



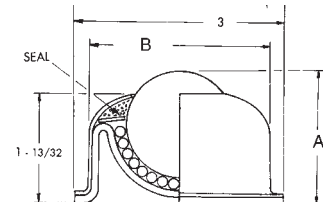
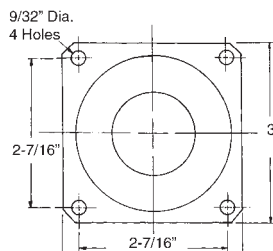
PART #	BALL MATERIAL	BALL SIZE	STATIC LOAD CAPACITY	MOBILITY LOAD	A	B	PLATE	HOLE SPACING	SCREW HOLE
HBCOF-32	Carbon Steel	1"	75 lbs.	25 lbs.	1-3/16"	1-11/16"	2-3/4"	2-3/16"	7/32"
HNBCOF-32	Nylon	1"	35 lbs.	11 lbs.	1-3/16"	1-11/16"	2-3/4"	2-3/16"	7/32"

## SQUARE FLANGE

Carbon Steel



Nylon



PART #	BALL MATERIAL	BALL SIZE	STATIC LOAD CAPACITY	MOBILITY LOAD	A	B	PLATE	HOLE SPACING	SCREW HOLE
HBCSF-48	Carbon Steel	1-1/2"	250 lbs.	83 lbs.	1-13/16"	2-19/32"	3"	2-7/16"	9/32"
HNBCSF-48	Nylon	1-1/2"	125 lbs.	41 lbs.	1-13/16"	2-19/32"	3"	2-7/16"	9/32"

# BALL CASTER/TRANSFERS

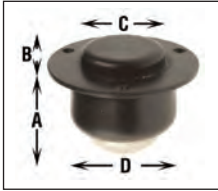


APPLICATIONS: Furniture, Conveyor Transfer Tables, Store Fixtures & Displays, Computer Equipment.

## PRODUCT FEATURES:

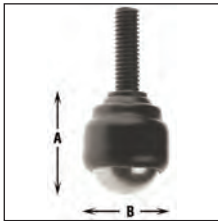
- **Carbon Steel Ball:** Nicked Plated; **Housing:** Black Oxide Finish.
- High load ratings, although small in size.
- Able to move in all directions.
- Can be used as a caster or inverted as a ball transfer.

## COUNTERSUNK WITH ROUND FLANGE



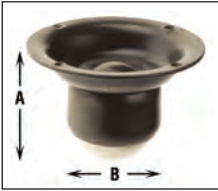
PART #	BALL SIZE	LOAD CAPACITY PER CASTER	LOAD CAPACITY PER CASTER				PLATE DIA.	HOLE SPACING	SCREW HOLE DIA.
			A	B	C	D			
BCCRF-22	11/16"	100 lbs.	3/4"	5/32"	45/64"	15/16"	1-5/16"	1-7/64"	.116
BCCRF-32	1"	150 lbs.	1-1/16"	3/16"	31/32"	1-7/32"	1-23/32"	1-15/32"	.144

## THREADED STEM



PART #	BALL SIZE	LOAD CAPACITY PER CASTER	LOAD CAPACITY PER CASTER		
			A	B	STEM
BCTS-325	1"	150 lbs.	1-15/32"	1-7/32"	5/16-18 x 3/4" Long
BCTS-326	1"	150 lbs.	1-15/32"	1-7/32"	3/8-16 x 1-7/32" Long

## ROUND FLANGE



PART #	BALL SIZE	LOAD CAPACITY PER CASTER	LOAD CAPACITY PER CASTER				
			A	B	PLATE DIA.	HOLE SPACING	SCREW HOLE DIA.
BCRF-32	1"	150 lbs.	1-1/2"	1-7/32"	2-7/16"	2-3/16"	.156
BCRF-36	1-1/8"	200 lbs.	1-21/32"	1-19/64"	2-7/16"	2-3/16"	.156
BCRF-40	1-1/4"	250 lbs.	1-3/4"	1-27/64"	2-7/16"	2-3/16"	.156

## GRIPNECK STEM



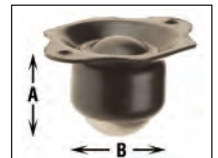
PART #	BALL SIZE	LOAD CAPACITY PER CASTER	LOAD CAPACITY PER CASTER			
			A	B	STEM DIA.	MAX. DEPTH
BCGS-22	11/16"	100 lbs.	1-7/32"	15/16"	5/16"	1-3/16"
BCGS-32	1"	150 lbs.	1-21/32"	1-7/32"	3/8"	1-3/4"
BCGS-36	1-1/8"	200 lbs.	1-13/16"	1-19/64"	3/8"	1-3/4"
BCGS-40	1-1/4"	250 lbs.	1-29/32"	1-27/64"	3/8"	1-3/4"

## ROUND FLANGE WITH THREADED STEM



PART #	BALL SIZE	LOAD CAPACITY PER CASTER	LOAD CAPACITY PER CASTER			PLATE DIA.	HOLE SPACING	SCREW HOLE DIA.
			A	B	STEM			
BCRFTS-32	1"	150 lbs.	1-1/2"	1-7/32"	3/8-16 x 11/16" Long	2-7/16"	2-3/16"	.156
BCRFTS-40	1-1/4"	250 lbs.	1-3/4"	1-27/64"	3/8-16 x 11/16" Long	2-7/16"	2-3/16"	.156

## OBLONG FLANGE



PART #	BALL SIZE	LOAD CAPACITY PER CASTER	LOAD CAPACITY PER CASTER			HOLE SPACING	SCREW HOLE DIA.
			A	B	PLATE SIZE		
BCOF-22	11/16"	100 lbs.	1"	15/16"	1-11/16" x 2-7/16"	2"	.156
BCOF-32	1"	150 lbs.	1-9/32"	1-7/32"	1-11/16" x 2-7/16"	2"	.156

**\*\*Other sizes & styles available. Minimums apply. Please inquire.\*\***





# IMPORTED SINGLE WHEEL CASTERS

## 1-1/2", 2", 2-1/2" & 3" Diameter Wheels



- SINGLE BALL BEARING RACEWAY
- NICKEL FINISH
- SELF LUBRICATING BEARINGS
- BLACK POLYPROPYLENE
- GRAY THERMOPLASTIC RUBBER
- BLACK SOFT RUBBER

### TOP PORTIONS AVAILABLE: SEE CHARTS ON NEXT PAGE

 <p><b>1-3/16" x 2" RECTANGULAR PLATE</b> <b>A.</b> HOLE SPACING: 13/16" x 1-9/16"</p> <p>SHOWN WITH BRAKE</p>	 <p><b>7/16" x 1-3/8" FRICTION RING STEM</b> <b>B.</b></p> <p>SHOWN WITHOUT BRAKE</p>	 <p><b>3/8"-16 x 1" THREADED STEM</b> <b>C.</b></p> <p>SHOWN WITH BRAKE</p>	 <p><b>5/16"-18 x 1" THREADED STEM</b> <b>D.</b></p> <p>SHOWN WITHOUT BRAKE</p>
---	--	--	--



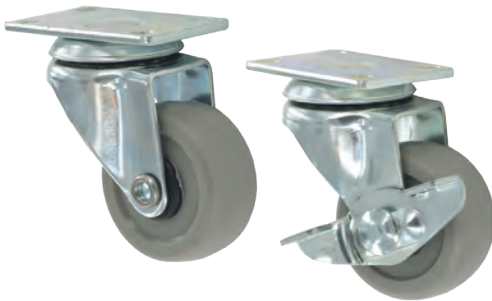
### POLYPROPYLENE:

Lightweight, yet impact strength is far superior to hard rubber wheels. Offers superior resistance to most oils, chemicals, grease, solvents and acids. For light and medium duty applications.

**Temperature Range:** -5° F to 150° F

**Hardness:** 65(±5) Durometer Shore D Scale

### THERMOPLASTIC RUBBER (TPR):



High performance wheel offers the advantage of both hard and soft tread materials in a single wheel. Like a hard tread wheel, TPR rolls easily and is very durable. Like soft tread wheel, it rolls quietly, protects floors and resists impacts with a cushion ride. Non-marking wheel resists chemicals, water, steam, metal shavings and other floor debris. Features maximum weatherability.

**Temperature Range:** -5° F to 140° F

**Hardness:** 95(±5) Durometer Shore A Scale

### SOFT RUBBER:



Very attractive, all purpose wheel. Easy, quiet roll, resists impacts with a cushioned ride. Features maximum weatherability, resistance to chemicals, water and steam. Rejects floor debris.

**Temperature Range:** -30° F to 140° F

**Hardness:** 85(±5) Durometer Shore A Scale

# IMPORTED SINGLE WHEEL CASTERS

## 1-1/2", 2", 2-1/2" & 3" Diameter Wheels

• SINGLE BALL BEARING RACEWAY • NICKEL FINISH • SELF LUBRICATING BEARINGS

• BLACK POLYPROPYLENE • GRAY THERMOPLASTIC RUBBER • BLACK SOFT RUBBER



### POLYPROPYLENE WHEELS

WITHOUT BRAKE	PART #	TOP PORTION	WHEEL MATERIAL	WHEEL DIA.	WHEEL WIDTH	LOAD CAPACITY PER CASTER	MOUNTING HEIGHT	SWIVEL RADIUS	PIECES PER CARTON
	2IWP-A	A	Polypropylene	2"	13/16"	70 lbs.	2-5/8"	1-7/8"	100
	2IWP-B	B					2-9/16"		
WITH BRAKE	PART #	TOP PORTION	WHEEL MATERIAL	WHEEL DIA.	WHEEL WIDTH	LOAD CAPACITY PER CASTER	MOUNTING HEIGHT	SWIVEL RADIUS	PIECES PER CARTON
	2IWP-A-BR	A	Polypropylene	2"	13/16"	70 lbs.	2-5/8"	1-7/8"	100
	2IWP-B-BR	B					2-9/16"		

### THERMOPLASTIC RUBBER WHEELS

WITHOUT BRAKE	PART #	TOP PORTION	WHEEL MATERIAL	WHEEL DIA.	WHEEL WIDTH	LOAD CAPACITY PER CASTER	MOUNTING HEIGHT	SWIVEL RADIUS	PIECES PER CARTON
	15IW-A-T	A	Thermoplastic Rubber	1-1/2"	11/16"	70 lbs.	2-5/16"	1-1/2"	100
	15IW-B-T	B					2-9/32"		
	2IW-A-T	A	Thermoplastic Rubber	2"	3/4"	70 lbs.	2-9/16"	1-7/8"	100
	2IW-B-T	B					2-5/8"		
WITH BRAKE	PART #	TOP PORTION	WHEEL MATERIAL	WHEEL DIA.	WHEEL WIDTH	LOAD CAPACITY PER CASTER	MOUNTING HEIGHT	SWIVEL RADIUS	PIECES PER CARTON
	15IW-A-T-BR	A	Thermoplastic Rubber	1-1/2"	11/16"	70 lbs.	2-5/16"	1-13/16"	100
	15IW-B-T-BR	B					2-9/32"		
	2IW-A-T-BR	A	Thermoplastic Rubber	2"	3/4"	70 lbs.	2-9/16"	1-7/8"	100
	2IW-B-T-BR	B					3-3/16"		

### SOFT RUBBER WHEELS

WITHOUT BRAKE	PART #	TOP PORTION	WHEEL MATERIAL	WHEEL DIA.	WHEEL WIDTH	LOAD CAPACITY PER CASTER	MOUNTING HEIGHT	SWIVEL RADIUS	PIECES PER CARTON	
	2IW-A	A	Soft Rubber	2"	13/16"	70 lbs.	2-9/16"	1-7/8"	100	
	2IW-B	B								
	2IW-C	C								
	2IW-D	D								
	25IW-A	A	Soft Rubber	2-1/2"	13/16"	80 lbs.	3-3/16"	2-3/16"	100	
	25IW-B	B					3-1/16"			
	25IW-C	C					3-1/16"			
	25IW-D	D					3-1/16"			
	3IW-A	A	Soft Rubber	3"	13/16"	90 lbs.	3-5/8"	2-1/2"	100	
	3IW-B	B					3-9/16"			
	3IW-C	C					3-9/16"			
	3IW-D	D					3-9/16"			
WITH BRAKE	PART #	TOP PORTION	WHEEL MATERIAL	WHEEL DIA.	WHEEL WIDTH	LOAD CAPACITY PER CASTER	MOUNTING HEIGHT	SWIVEL RADIUS	PIECES PER CARTON	
	2IW-A-BR	A	Soft Rubber	2"	13/16"	70 lbs.	2-9/16"	1-7/8"	100	
	2IW-B-BR	B					3-1/16"			2-3/16"
	2IW-C-BR	C					2-9/16"			1-7/8"
	2IW-D-BR	D					2-9/16"			1-7/8"
	25IW-A-BR	A	Soft Rubber	2-1/2"	13/16"	80 lbs.	3-3/16"	2-3/16"	100	
	25IW-B-BR	B					3-1/16"			
	25IW-C-BR	C					3-1/16"			
	25IW-D-BR	D					3-1/16"			
	3IW-A-BR	A	Soft Rubber	3"	13/16"	90 lbs.	3-5/8"	2-1/2"	100	
	3IW-B-BR	B					3-9/16"			
	3IW-C-BR	C					3-9/16"			
	3IW-D-BR	D					3-9/16"			

# GENERAL DUTY CASTERS

## 2", 2-1/2", 3", 4" & 5" Diameter Wheels

SUMMIT Single Wheel Casters have been engineered and tested to exceed BIFMA, ANSI & GSA standards. APPLICATIONS: General usage, factories, warehouses, for display racks, dollies, boxes etc. A combination of **STRENGTH, DURABILITY, AND ECONOMY.**












*A composition rubber wheel combining a soft rubber tread with a hard rubber core for quiet movement. A cushioned ride and maximum floor protection.*

### PRODUCT FEATURES:

- Double ball bearing raceway for long life and a smooth ride.
- Self lubricating bearings.
- Temperature operating range -40°F to 158°F.
- Brite Nickel or Zinc finish.



### TOP PORTIONS AVAILABLE

<b>A.</b> 7/16" Dia. x 1" Long 
<b>B.</b> 7/16" Dia. x 1-3/8" Long 
<b>C.</b> 7/16" Dia. x 1-7/8" Long FRICTION RING STEM
<b>D.</b> 7/16" Straight Stem x 1-7/8" Long STRAIGHT STEM FOR SUMMIT CASTER 
<b>E.</b> 5/16-18 x 3/4" Long 
<b>F.</b> 5/16-18 x 1" Long 
<b>G.</b> 5/16-18 x 1-1/2" Long THREADED STEM
<b>H.</b> 3/8-16 x 1/2" Long 
<b>I.</b> 3/8-16 x 1" Long 
<b>J.</b> 3/8-16 x 1-1/2" Long THREADED STEM
<b>K.</b> 1/2-13 x 1-1/2" Long THREADED STEM 
<b>L.</b> 1-3/16" x 2" TOP PLATE 13/16" x 1-9/16" Hole Spacing 

TOP PORTION	PART #	WHEEL DIA.	TREAD WIDTH	LOAD CAPACITY PER CASTER	MOUNTING HEIGHT	SWIVEL RADIUS	PIECES PER CARTON
<b>A</b>	390-00-20DC-13-00	2"	1"	75 lbs.	2-9/16"	1-7/8"	80
	390-00-25DC-13-00	2-1/2"	1"	90 lbs.	3-1/16"	2-3/16"	80
	990-00-30DC-23-SD	3"	1"	100 lbs.	3-9/16"	2-1/2"	80
<b>B</b>	390-00-20DD-13-00	2"	1"	75 lbs.	2-9/16"	1-7/8"	80
	390-00-25DD-13-00	2-1/2"	1"	90 lbs.	3-1/16"	2-3/16"	80
	990-00-30DD-23-SD	3"	1"	100 lbs.	3-9/16"	2-1/2"	80
	990-01-40DD-23-SD	4"	1"	125 lbs.	4-9/16"	3-3/8"	28
	990-01-41DD-23-SD	4"	1-1/4"	200 lbs.	4-15/16"	3-9/16"	28
<b>C</b>	990-01-50DD-23-SD	5"	1"	135 lbs.	5-9/16"	4-1/32"	20
	990-01-51DD-23-SD	5"	1-1/4"	210 lbs.	5-9/16"	4-5/32"	20
	990-00-30DF-23-SD	3"	1"	100 lbs.	3-9/16"	2-1/2"	80
<b>D</b>	990-01-50DF-23-SD	5"	1"	135 lbs.	5-9/16"	4-1/32"	20
	390-00-20DF-13-PO	2"	1"	75 lbs.	2-9/16"	1-7/8"	80
	390-00-25DF-13-PO	2-1/2"	1"	90 lbs.	3-1/16"	2-3/16"	80
<b>E</b>	990-00-30DF-23-PO	3"	1"	100 lbs.	3-9/16"	2-1/2"	80
	390-00-20BB-13-18	2"	1"	75 lbs.	2-9/16"	1-7/8"	80
	390-00-25BC-13-18	2-1/2"	1"	90 lbs.	3-1/16"	2-3/16"	80
<b>F</b>	390-00-20BE-13-18	2"	1"	75 lbs.	2-9/16"	1-7/8"	80
	990-00-30BE-23-18	3"	1"	100 lbs.	3-9/16"	2-1/2"	80
	390-00-25CA-13-16	2-1/2"	1"	90 lbs.	3-1/16"	2-3/16"	80
<b>G</b>	990-00-30CA-23-16	3"	1"	100 lbs.	3-9/16"	2-1/2"	80
	390-00-20CC-13-16	2"	1"	75 lbs.	2-9/16"	1-7/8"	80
	990-00-30CC-23-16	3"	1"	100 lbs.	3-9/16"	2-1/2"	80
<b>H</b>	390-00-20CE-13-16	2"	1"	75 lbs.	2-9/16"	1-7/8"	80
	990-00-30CE-23-16	3"	1"	100 lbs.	3-9/16"	2-1/2"	80
	990-01-31EE-23-13	3"	1-1/4"	175 lbs.	3-9/16"	2-13/16"	32
<b>I</b>	990-01-40EE-23-13	4"	1"	125 lbs.	4-9/16"	3-3/8"	28
	990-01-41EE-23-13	4"	1-1/4"	200 lbs.	4-15/16"	3-9/16"	28
	990-01-51EE-23-13	5"	1-1/4"	210 lbs.	5-15/16"	4-5/32"	20
<b>J</b>	390-00-20TP-13-BO	2"	1"	75 lbs.	2-5/8"	1-7/8"	80
	390-00-25TP-13-BO	2-1/2"	1"	90 lbs.	3-3/16"	2-3/16"	80
	390-00-30TP-23-BO	3"	1"	100 lbs.	3-5/8"	2-1/2"	80

### BRAKE OPTION AVAILABLE

To order any of the above casters **with a brake**, change the second digit of the part # (9) to a (4)

# INSTITUTIONAL CASTER



## MEDIUM DUTY



### PRODUCT FEATURES:

- Non-marring gray thermoplastic rubber (TPR) wheel
- Precision ball bearing supports heavier loads
- Full thread guard
- Tread lock brake
- Dual ball bearing raceway
- Zinc plated finish
- 3/8" diameter nut and bolt axle

NSF® CERTIFICATE NUMBERS AND MANUFACTURER NAME AVAILABLE, PLEASE INQUIRE.

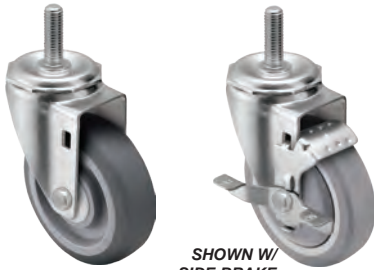


SHOWN W/  
SIDE BRAKE

### TOP PLATE

2-3/4" x 3-3/4" overall with 1-3/4" x 2-3/4" hole spacing for 5/16 bolts

SWIVEL PART #	SWIVEL w/SIDE BRAKE PART #	WHEEL DIAMETER	TREAD WIDTH	LOAD CAPACITY PER CASTER	MOUNTING HEIGHT	SWIVEL RADIUS
NF12-3TP	NF12-3TP-BRK	3"		210 lbs.	4-1/4"	2-7/8"
NF12-4TP	NF12-4TP-BRK	4"	1-1/4"	260 lbs.	5-1/4"	3-3/8"
NF12-5TP	NF12-5TP-BRK	5"		280 lbs.	6-1/4"	3-7/8"



SHOWN W/  
SIDE BRAKE

### THREADED STEM

1/2 - 13 x 1-1/2" Long

SWIVEL PART #	SWIVEL w/SIDE BRAKE PART #	WHEEL DIAMETER	TREAD WIDTH	LOAD CAPACITY PER CASTER	MOUNTING HEIGHT	SWIVEL RADIUS
NF12-3THR	NF12-3THR-BRK	3"		210 lbs.	4-1/8"	2-7/8"
NF12-4THR	NF12-4THR-BRK	4"	1-1/4"	260 lbs.	5-1/8"	3-3/8"
NF12-5THR	NF12-5THR-BRK	5"		280 lbs.	6-1/8"	3-7/8"

### RUBBER ADAPTOR FOR 1" I.D. TUBE

14-18 GA Tubing



SWIVEL PART #	SWIVEL w/SIDE BRAKE PART #	WHEEL DIAMETER	TREAD WIDTH	LOAD CAPACITY PER CASTER	MOUNTING HEIGHT	SWIVEL RADIUS
NF12-3A1	NF12-3A1-BRK	3"		210 lbs.	4-1/8"	2-7/8"
NF12-4A1	NF12-4A1-BRK	4"	1-1/4"	260 lbs.	5-1/8"	3-3/8"
NF12-5A1	NF12-5A1-BRK	5"		280 lbs.	6-1/8"	3-7/8"

### RUBBER ADAPTOR FOR 1-5/8" I.D. TUBE

14-18 GA Tubing



SHOWN W/  
SIDE BRAKE

SWIVEL PART #	SWIVEL w/SIDE BRAKE PART #	WHEEL DIAMETER	TREAD WIDTH	LOAD CAPACITY PER CASTER	MOUNTING HEIGHT	SWIVEL RADIUS
NF12-3A2	NF12-3A2-BRK	3"		210 lbs.	4-1/8"	2-7/8"
NF12-4A2	NF12-4A2-BRK	4"	1-1/4"	260 lbs.	5-1/8"	3-3/8"
NF12-5A2	NF12-5A2-BRK	5"		280 lbs.	6-1/8"	3-7/8"

# 100/500 GENERAL DUTY FLATE CASTERS



## RUBEREX • ROCKITE • POLYFLEX

2", 2-1/2", 3", 4" & 5" Diameter Wheels

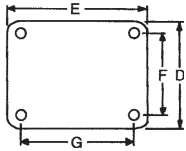
Ideal for general use in factories, warehouses, stores, hotels, schools, offices, etc.

Such applications may include furniture dollies, display racks, tool boxes, equipment carts, etc.



### PRODUCT FEATURES: Available in 3 wheel styles-

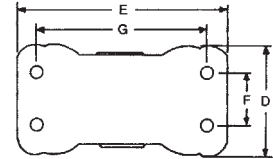
- 1. RUBEREX®** - This composition rubber wheel combines a soft rubber tread with a hard rubber core for quiet movement, a cushioned ride, and maximum floor protection. Temperature operating range is -40°F to 158°F.
- 2. ROCKITE®** - A hard rubber molded composition throughout. It is impervious to oils, greases and gasoline. It offers many desirable characteristics; highload rating, good mobility, high impact resistance, and good floor protection. Temperature operating range is -40°F to 158°F.
- 3. POLYFLEX** - This polypropylene wheel is light in weight, low in cost and high in impact strength. It resists water and chemical absorption and even stands up to repeated steam cleaning non-marking tread provides excellent floor protection.



**FOR SWIVEL & SWIVEL W/BRAKE CASTERS**

WHEEL DIA.	SIZE OF TOP PLATE D x E	MOUNTING HOLE SPACING F x G	MOUNTING HOLE DIA.
2"	1-7/8" x 2-9/16"	15/16" x 2-1/8"	1/4"
2-1/2"	2-3/4" x 3-13/16"	1-3/4" x 3"	5/16"
3"	3-1/8" x 4-1/8"	2-3/8" x 3-3/8" to 3-7/16"	5/16"
4"	4" x 5-1/8"	3" x 4"	3/8"
5"	5-1/16" x 5-15/16"	3-3/4" x 4-1/2"	7/16"

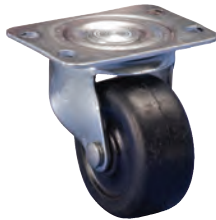
### TOP PLATE DIMENSIONS:



**FOR RIGID PLATE CASTERS**

WHEEL DIA.	SIZE OF TOP PLATE D x E	MOUNTING HOLE SPACING F x G	MOUNTING HOLE DIA.
2"	1-1/2" x 2-21/32"	15/16" x 2-1/8"	1/4"
2-1/2"	2-1/4" x 4-7/16"	1-1/16" x 3-1/2"	5/16"
3"	2-1/2" x 4-15/16"	1-3/16" x 4"	5/16"
4"	3-1/8" x 6-1/4"	1-3/4" x 5"	3/8"
5"	3-1/2" x 7-1/4"	1-7/8" x 6"	7/16"

## SWIVEL PLATE CASTER



PART #	WHEEL MATERIAL	WHEEL DIA.	TREAD WIDTH	LOAD CAPACITY PER CASTER	MOUNTING HEIGHT	SWIVEL RADIUS	PIECES PER CARTON
121-2	Ruberex	2"	1"	90 lbs.	2-1/2"	1-3/4"	50
127-2	Rockite	2"	1"	150 lbs.	2-1/2"	1-3/4"	50
160-2	Polyflex	2"	1"	150 lbs.	2-1/2"	1-3/4"	50
121-25	Ruberex	2-1/2"	1-1/8"	100 lbs.	3-1/4"	2-1/4"	50
127-25	Rockite	2-1/2"	1-1/8"	200 lbs.	3-1/4"	2-1/4"	50
121-3	Ruberex	3"	1-1/4"	175 lbs.	3-13/16"	2-7/16"	24
127-3	Rockite	3"	1-1/4"	270 lbs.	3-13/16"	2-7/16"	24
160-3	Polyflex	3"	1-1/4"	270 lbs.	3-13/16"	2-7/16"	24
121-4	Ruberex	4"	1-5/16"	225 lbs.	5"	3-3/16"	20
127-4	Rockite	4"	1-5/16"	350 lbs.	5"	3-3/16"	20
121-5	Ruberex	5"	1-1/2"	300 lbs.	6-9/16"	3-15/16"	10

## SWIVEL PLATE CASTER W/BRAKE



PART #	WHEEL MATERIAL	WHEEL DIA.	TREAD WIDTH	LOAD CAPACITY PER CASTER	MOUNTING HEIGHT	SWIVEL RADIUS	PIECES PER CARTON
121-2SB	Ruberex	2"	1"	90 lbs.	2-1/2"	1-3/4"	50
127-2SB	Rockite	2"	1"	150 lbs.	2-1/2"	1-3/4"	50
121-3SB	Ruberex	3"	1-1/4"	175 lbs.	3-13/16"	2-7/16"	24
127-3SB	Rockite	3"	1-1/4"	270 lbs.	3-13/16"	2-7/16"	24
121-4SB	Ruberex	4"	1-5/16"	225 lbs.	5"	3-3/16"	20
127-4SB	Rockite	4"	1-5/16"	350 lbs.	5"	3-3/16"	20

## RIGID PLATE CASTER



PART #	WHEEL MATERIAL	WHEEL DIA.	TREAD WIDTH	LOAD CAPACITY PER CASTER	MOUNTING HEIGHT	PIECES PER CARTON
521-2	Ruberex	2"	1"	90 lbs.	2-1/2"	50
527-2	Rockite	2"	1"	150 lbs.	2-1/2"	50
560-2	Polyflex	2"	1"	150 lbs.	2-1/2"	50
521-25	Ruberex	2-1/2"	1-1/8"	100 lbs.	3-1/4"	50
527-25	Rockite	2-1/2"	1-1/8"	200 lbs.	3-1/4"	50
521-3	Ruberex	3"	1-1/4"	175 lbs.	3-13/16"	24
527-3	Rockite	3"	1-1/4"	270 lbs.	3-13/16"	24
560-3	Polyflex	3"	1-1/4"	270 lbs.	3-13/16"	24
521-4	Ruberex	4"	1-5/16"	225 lbs.	5"	20
527-4	Rockite	4"	1-1/2"	300 lbs.	6-9/16"	20



# IMPORTED GENERAL DUTY CASTERS



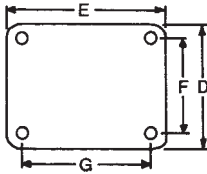
## 2", 2-1/2" & 3" Diameter Wheels - SOFT WHEEL RUBBER

**APPLICATIONS:** General usage in factories, warehouses, display racks, trucks, tool boxes, etc.  
A combination of **STRENGTH, DURABILITY** and **ECONOMY.**

- SINGLE BALL BEARING RACEWAY
- ZINC FINISH
- SOFT RUBBER WHEEL

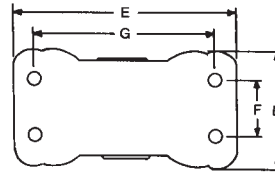
### TOP PLATE DIMENSIONS:

FOR SWIVEL & SWIVEL W/BRAKE CASTERS



**821 PLATE**

FOR RIGID PLATE CASTERS



**921 PLATE**

PART #	SIZE OF TOP PLATE D x E	MOUNTING HOLE SPACING F x G	MOUNTING HOLE DIA.
821-2	1-7/8" x 2-5/8"	15/16" x 2-1/8"	1/4"
821-25	2-3/4" x 3-13/16"	1-3/4" x 3"	5/16"
821-3	3-1/8" x 4-1/8"	2-3/8" x 3-3/8"	5/16"

PART #	SIZE OF TOP PLATE D x E	MOUNTING HOLE SPACING F x G	MOUNTING HOLE DIA.
921-2	1-1/2" x 2-21/32"	15/16" x 2-1/8"	1/4"
921-25	2-3/8" x 4-3/8"	1" x 3-1/2"	5/16"
921-3	2-1/2" x 4-15/16"	1-3/16" x 4"	5/16"



### #821 SWIVEL PLATE CASTER

PART #	WHEEL DIA.	WHEEL WIDTH	LOAD CAPACITY PER CASTER	OVERALL HEIGHT	SWIVEL RADIUS
821-2	2"	1"	80 lbs.	2-5/8"	1-11/16"
821-25	2-1/2"	1-1/8"	90 lbs.	3-1/8"	2-3/16"
821-3	3"	1-1/4"	150 lbs.	3-13/16"	2-7/16"



### #821SB SWIVEL PLATE CASTER W/BRAKE

PART #	WHEEL DIA.	WHEEL WIDTH	LOAD CAPACITY PER CASTER	OVERALL HEIGHT	SWIVEL RADIUS
821-2SB	2"	1"	80 lbs.	2-5/8"	1-11/16"
821-25SB	2-1/2"	1-1/8"	90 lbs.	3-1/8"	2-3/16"
821-3SB	3"	1-1/4"	150 lbs.	3-13/16"	2-7/16"



### #921 RIGID PLATE CASTER

PART #	WHEEL DIA.	WHEEL WIDTH	LOAD CAPACITY PER CASTER	OVERALL HEIGHT
921-2	2"	1"	80 lbs.	2-5/8"
921-25	2-1/2"	1-1/8"	90 lbs.	3-1/8"
921-3	3"	1-1/4"	150 lbs.	3-13/16"

# NEW OPI SERIES with B7 or B9 PLATE

## 3", 4" & 5" Diameter Wheels

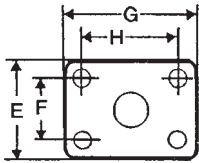


- **1" Wide Tread:** 125-135 lbs. load capacity per caster
- **1-1/4" Wide Tread:** 175-210 lbs. load capacity per caster

**APPLICATION: LIGHT-MEDIUM DUTY. SOFT RUBBER FOR A QUIET SMOOTH RIDE. ALL STOCKED FOR IMMEDIATE DELIVERY**

- **DOUBLE ROW BEARING RACES** -This construction provides maximum strength, mobility and smooth quiet operation.
- **HEAVY GAUGE CASE HARDENED STEEL HORN AND RACE RETAINER.**
- **SELF LUBRICATING** oil impregnated sintered metal bearings for excellent life.

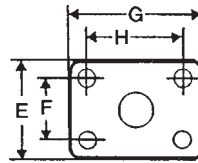
### PLATE SPECIFICATIONS:



#### B7 PLATE

H = hole to hole inside length  
 F = hole to hole inside width  
 G = outside length  
 E = outside width

SIZE	H	F	G	E
4"	2-7/8" - 3"	1-3/4"	3-3/4"	2-1/2"
5"	2-7/8" - 3"	1-3/4"	3-3/4"	2-1/2"



#### B9 PLATE

H = hole to hole inside length  
 F = hole to hole inside width  
 G = outside length  
 E = outside width

SIZE	H	F	G	E
4"	3-7/16"	2-3/8"	4-1/8"	3-1/8"
5"	3-7/16"	2-3/8"	4-1/8"	3-1/8"

### SWIVEL PLATE CASTER



CASTER PART #	WHEEL DIA.	TREAD WIDTH	LOAD CAPACITY		OVERALL HEIGHT	SWIVEL RADIUS	PIECES PER CARTON
			PER CASTER	PER CASTER			
B7S32	3"	1-1/4"	175 lbs.	3-3/4"	2-13/16"	50	
B7S41	4"	1"	125 lbs.	4-3/4"	3-3/8"	40	
B7S42	4"	1-1/4"	200 lbs.	5-1/16"	3-9/16"	25	
B7S51	5"	1"	135 lbs.	5-3/4"	4-1/32"	25	
B7S52	5"	1-1/4"	210 lbs.	6-1/16"	4-5/32"	20	
B9S32	3"	1-1/4"	175 lbs.	3-3/4"	2-13/16"	32	
B9S41	4"	1"	125 lbs.	4-3/4"	3-3/8"	28	
B9S42	4"	1-1/4"	200 lbs.	5-1/16"	3-9/16"	28	
B9S51	5"	1"	135 lbs.	5-3/4"	4-1/32"	20	
B9S52	5"	1-1/4"	210 lbs.	6-1/16"	4-5/32"	20	

### SWIVEL PLATE CASTER W/BRAKE



CASTER PART #	WHEEL DIA.	TREAD WIDTH	LOAD CAPACITY		OVERALL HEIGHT	SWIVEL RADIUS	PIECES PER CARTON
			PER CASTER	PER CASTER			
B7SB32	3"	1-1/4"	175 lbs.	3-3/4"	2-13/16"	40	
B7SB41	4"	1"	125 lbs.	4-3/4"	3-3/8"	30	
B7SB42	4"	1-1/4"	200 lbs.	5-1/16"	3-9/16"	25	
B7SB51	5"	1"	135 lbs.	5-3/4"	4-1/32"	20	
B7SB52	5"	1-1/4"	210 lbs.	6-1/16"	4-5/32"	15	
B9SB32	3"	1-1/4"	175 lbs.	3-3/4"	2-13/16"	32	
B9SB41	4"	1"	125 lbs.	4-3/4"	3-3/8"	28	
B9SB42	4"	1-1/4"	200 lbs.	5-1/16"	3-9/16"	28	
B9SB51	5"	1"	135 lbs.	5-3/4"	4-1/32"	20	
B9SB52	5"	1-1/4"	210 lbs.	6-1/16"	4-5/32"	20	

### RIGID PLATE CASTER



CASTER PART #	WHEEL DIA.	TREAD WIDTH	LOAD CAPACITY		OVERALL HEIGHT	SWIVEL RADIUS	PIECES PER CARTON
			PER CASTER	PER CASTER			
B7R32	3"	1-1/4"	175 lbs.	3-3/4"	N/A	50	
B7R41	4"	1"	125 lbs.	4-3/4"	N/A	35	
B7R42	4"	1-1/4"	200 lbs.	5-1/16"	N/A	25	
B7R51	5"	1"	135 lbs.	5-3/4"	N/A	30	
B7R52	5"	1-1/4"	210 lbs.	6-1/16"	N/A	15	
B9R32	3"	1-1/4"	175 lbs.	3-3/4"	N/A	32	
B9R42	4"	1-1/4"	200 lbs.	5-1/16"	N/A	28	
B9R51	5"	1"	135 lbs.	5-3/4"	N/A	28	
B9R52	5"	1-1/4"	210 lbs.	6-1/16"	N/A	20	

#### OTHER WHEEL MATERIALS AVAILABLE

Hard Rubber Tread w/Hard Rubber Core - Load Capacity: 270 lbs. (3" x 1-1/4"), 280 lbs. (4" x 1-1/4"), 290 lbs. (5" x 1-1/4").  
 Conductive Wheels - Load Capacity: 270 lbs. (3" x 1-1/4"), 280 lbs. (4" x 1-1/4"), 290 lbs. (5" x 1-1/4").  
 Polyolefin - Load Capacity: 270 lbs. (3" x 1-1/4"), 280 lbs. (4" x 1-1/4"), 290 lbs. (5" x 1-1/4").

Please call to discuss your requirements. Minimums apply.

# DF SERIES - DURA FOAM WHEELS

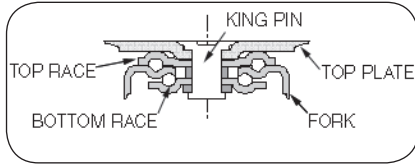
## 3", 4" & 5" Diameter Wheels



- 1" Wide Tread: 125-140 lbs. load capacity per caster
- 1-1/4" Wide Tread: 210-280 lbs. load capacity per caster

DURA FOAM wheels are molded from a blended polyolefin thus producing a wheel for almost every application. This hard, non-marring, stain resistant compound is impervious to fat, acid & grease while providing a long lasting, maintenance-free wheel at a low cost.

**APPLICATIONS:** Light-medium duty, usage in factories, warehouses, display racks, dollies, etc...

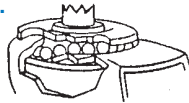


### PRODUCT FEATURES:

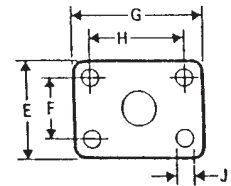
- Duo-level swivel construction.
- Fully hardened raceways.
- Factory lubricated with hi-temp grease.
- Zinc plated with iridite dip for rust prevention and appearance.

### PLATE SPECIFICATIONS:

Duo-level swivel construction provides the effect of 2 rows of ball bearings by utilizing a single row of hardened, polished steel balls operating at 2 different levels in hardened raceways. Complete ball bearing swivel action is attained for ease of operation and long life at maximum radial and thrust loads.



	Standard (-00)
Overall Size (E x G)	2-3/4" x 3-3/4"
Hole Spacing (F x H)	1-3/4" x 3"
Hole Diameter (J)	11/32"



## SWIVEL PLATE CASTER



CASTER PART #	WHEEL DIA.	TREAD WIDTH	LOAD CAPACITY PER CASTER	OVERALL HEIGHT	SWIVEL RADIUS	PIECES PER CARTON
DFS31	3"	1"	125 lbs.	3-7/8"	2-3/4"	52
DFS32	3"	1-1/4"	210 lbs.	3-3/4"	2-3/4"	40
DFS41	4"	1"	140 lbs.	4-3/4"	3-1/4"	32
DFS42	4"	1-1/4"	255 lbs.	4-5/8"	3-3/8"	30
DFS52	5"	1-1/4"	280 lbs.	5-5/8"	4-1/8"	20

## SWIVEL PLATE CASTER W/BRAKE



CASTER PART #	WHEEL DIA.	TREAD WIDTH	LOAD CAPACITY PER CASTER	OVERALL HEIGHT	SWIVEL RADIUS	PIECES PER CARTON
DFSB31	3"	1"	125 lbs.	3-7/8"	2-3/4"	52
DFSB32	3"	1-1/4"	210 lbs.	3-3/4"	2-3/4"	40
DFSB41	4"	1"	140 lbs.	4-3/4"	3-1/4"	32
DFSB42	4"	1-1/4"	255 lbs.	4-5/8"	3-3/8"	30
DFSB52	5"	1-1/4"	280 lbs.	5-5/8"	4-1/8"	20

## RIGID PLATE CASTER



CASTER PART #	WHEEL DIA.	TREAD WIDTH	LOAD CAPACITY PER CASTER	OVERALL HEIGHT	SWIVEL RADIUS	PIECES PER CARTON
DFR31	3"	1"	125 lbs.	3-7/8"	N/A	52
DFR32	3"	1-1/4"	210 lbs.	3-3/4"	N/A	40
DFR41	4"	1"	140 lbs.	4-3/4"	N/A	32
DFR42	4"	1-1/4"	255 lbs.	4-5/8"	N/A	30
DFR52	5"	1-1/4"	280 lbs.	5-5/8"	N/A	20

# INSTITUTIONAL CASTERS

## SUPER "G" CASTERS

**110** LOAD **160**  
**lbs** TO **lbs**  
**CAPACITY**  
 PER CASTER

**ADDS**  
**STRENGTH**  
 AND  
**STYLE**

### ISG75 SERIES



**3"**  
 WHEEL  
 DIAMETER

TOTAL  
 LOCKING  
 BRAKE

### PRODUCT FEATURES:

- Dust seal
- Thread guard
- Gray, non-marring rubber wheel on polypropylene hub
- Economic Zinc finish
- Brake pedal material: Zinc plated steel
- Horn assembly: Pressed steel w/Zinc plating
- Nut & bolt axle

### IDEAL FOR HOSPITAL EQUIPMENT!

### ISG100 SERIES



**4"**  
 WHEEL  
 DIAMETER



### SWIVEL OPTIONS:

PART #	WHEEL DIAMETER	WHEEL WIDTH	MOUNTING HEIGHT	PLATE SIZE	MOUNTING HOLE SPACING	SWIVEL RADIUS	LOAD CAPACITY PER CASTER
ISG75-1	3"	29/32"	4"	2-9/16" x 2-9/16"	1-29/32" x	2-9/16"	110 lbs.
ISG100-1	4"	1-1/16"	5-1/4"	2-15/16" x 2-15/16"	1-29/32"	3-7/16"	160 lbs.

### TOTAL LOCKING BRAKE OPTIONS:

PART #	WHEEL DIAMETER	WHEEL WIDTH	MOUNTING HEIGHT	PLATE SIZE	MOUNTING HOLE SPACING	SWIVEL RADIUS	LOAD CAPACITY PER CASTER
ISG75-1BR	3"	29/32"	4"	2-9/16" x 2-9/16"	1-29/32" x	3-15/32"	110 lbs.
ISG100-1BR	4"	1-1/16"	5-1/4"	2-15/16" x 2-15/16"	1-29/32"	4-1/32"	160 lbs.

## SUPER "H" CASTERS

**150** LOAD **190**  
**lbs** TO **lbs**  
**CAPACITY**  
 PER CASTER

**ADDS**  
**STRENGTH**  
 AND  
**STYLE**

### 5180 SERIES



**3.2"**  
 WHEEL  
 DIAMETER



TOTAL  
 LOCKING  
 BRAKE

METAL  
 CHROME  
 PLATED  
 HUB

### PRODUCT FEATURES:

- Dust seal
- Thread guard
- Gray, non-marring TPR wheel on polypropylene hub
- Stylish nickel finish, (Polished mirror appearance)
- Brake pedal material: ABS (Grey)
- Horn assembly: Pressed steel w/Chrome plating
- Nut & bolt axle

**IDEAL FOR  
 FURNITURE!**

### 7100 SERIES



**4"**  
 WHEEL  
 DIAMETER



### SWIVEL OPTIONS:

PART #	WHEEL DIAMETER	WHEEL WIDTH	MOUNTING HEIGHT	PLATE SIZE	MOUNTING HOLE SPACING	SWIVEL RADIUS	LOAD CAPACITY PER CASTER
5180-CHR	3.20"	15/16"	4-1/16"	2-3/8" x 2-3/8"	1-13/16" x 1-13/16"	2-11/16"	150 lbs.
7100-CHR	4"	15/16"	4-3/4"	2-3/8" x 2-3/8"	1-13/16"	3-5/32"	190 lbs.

### TOTAL LOCKING BRAKE OPTIONS:

PART #	WHEEL DIAMETER	WHEEL WIDTH	MOUNTING HEIGHT	PLATE SIZE	MOUNTING HOLE SPACING	SWIVEL RADIUS	LOAD CAPACITY PER CASTER
5180-CHR-BRK	3.20"	15/16"	4-1/16"	2-3/8" x 2-3/8"	1-13/16" x 1-13/16"	3-3/8"	150 lbs.
7100-CHR-BRK	4"	15/16"	4-3/4"	2-3/8" x 2-3/8"	1-13/16"	3-31/32"	190 lbs.

# 400 LIGHT/MEDIUM DUTY CASTERS

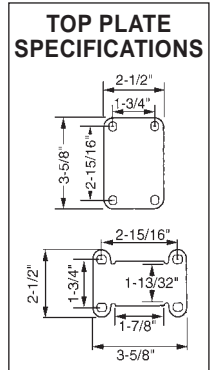
## Gray Dyna - Tred TPR Casters

3", 4" & 5" Diameter Wheels

**IDEAL FOR TOOL BOXES, BAKERY RACKS, DOLLIES, STOCK TRUCKS AND OTHER INSTITUTIONAL USES REQUIRING GOOD MOBILITY.**

### PRODUCT FEATURES:

- **Dyna-Tred TPR Wheels:** Gray thermoplastic rubber. Can resist most chemicals, caustics, oils & acids. Rugged polypropylene hub won't dent, mar, fade or stain. Tread and hub are double bonded and mechanically interlocked to eliminate thread separation. Give dollies, carts, and trucks a soft and cushioned non-marking ride. Temperature operating range in -40°F to +180°F.
- **Two independent rows** of hardened and polished ball bearings raceways.
- **Thread/guard hub** stocked in 3" only. Thread guards can help protect wheel bearings from buildup of material such as threads that can cause binding. Thread guards promote longer life and lower maintenance of casters & wheels.
- **Self lubricated bearings.**
- **Corrosion resistant zinc finish.**



## SWIVEL PLATE CASTER

PART #	WHEEL DIA.	TREAD WIDTH	LOAD CAPACITY PER CASTER	MOUNTING HEIGHT	SWIVEL RADIUS	# OF PIECES PER CARTON
490-3	3"	1-1/4"	180 lbs.	3-13/16"	2-3/4"	24
493-3TG (thread guard)	3"	1-1/4"	180 lbs.	3-13/16"	2-3/4"	24
490-4	4"	1-1/4"	250 lbs.	5"	3-7/16"	20
490-5	5"	1-1/4"	300 lbs.	6-1/8"	3-15/16"	10

## SWIVEL PLATE CASTER W/BRAKE

PART #	WHEEL DIA.	TREAD WIDTH	LOAD CAPACITY PER CASTER	MOUNTING HEIGHT	SWIVEL RADIUS	# OF PIECES PER CARTON
490-3SB	3"	1-1/4"	180 lbs.	3-13/16"	2-3/4"	25
490-4SB	4"	1-1/4"	250 lbs.	5"	3-7/16"	20
490-5SB	5"	1-1/4"	300 lbs.	6-1/8"	3-15/16"	10

## RIGID PLATE CASTER

PART #	WHEEL DIA.	TREAD WIDTH	LOAD CAPACITY PER CASTER	MOUNTING HEIGHT	SWIVEL RADIUS	# OF PIECES PER CARTON
7790-3	3"	1-1/4"	180 lbs.	3-13/16"	2-3/4"	24
7793-3TG (thread guard)	3"	1-1/4"	180 lbs.	3-13/16"	2-3/4"	24
7790-4	4"	1-1/4"	250 lbs.	5"	3-7/16"	20
7790-5	5"	1-1/4"	300 lbs.	6-1/8"	3-15/16"	10

## BUSINESS MACHINE CASTERS

### LOW PROFILE/MEDIUM HEAVY DUTY

2" & 3" Diameter Wheels

**Made to support & move heavy office equipment where overall height is a limiting factor. Ideal for use on copiers, computers, large printers, & other heavy diagnostic equipment.**

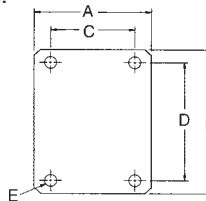


### PRODUCT FEATURES:

- Low profile, but does not compromise strength. Is produced in smaller diameters with high load rating capacities.
- Excellent floor protection; non marring.
- Will roll on carpeted floors.

### WHEEL MATERIAL:

- **Polyflex (2" dia.):** This polypropylene wheel is light in weight, low in cost and high in impact strength. It resists water and chemical absorption and even stands up to repeated steam cleaning. Non-marking tread provides excellent floor protection.
- **Glass Filled Nylon (3" dia.):** This wheel offers high impact strength. It is produced with a roller bearing so that can withstand heavy loads. Non-marking tread provides excellent floor protection.
- **Finish:** Black oxide with corrosion resistant zinc top plate.
- **Stocked in swivel only.** Optional thumb screw brake may be available. Please inquire. Minimums apply.



### TOP PLATE SPECIFICATIONS:

DIA.	A	B	C	D	E
2"	2-9/16"	3-5/8"	1-3/4"	2-7/8" to 3"	5/16"
3"	3-1/8"	4-1/8"	2-3/8"	3-13/32"	5/16"

PART #	WHEEL MATERIAL	WHEEL DIA.	TREAD WIDTH	LOAD CAPACITY PER CASTER	MOUNTING HEIGHT	SWIVEL RADIUS	# OF PIECES PER CARTON
HXEP629R	Polyflex	2"	1-11/16"	300 lbs.	2-27/32"	2-1/16"	40
HA435-3	Glass Filled Nylon	3"	1-13/16"	500 lbs.	3-31/32"	2-5/16"	25

# CASTER ACCESSORIES

## CASTER SOCKETS

Material: Polypropylene



PART #	FOR CASTER		HOLE SIZE REQUIRED
	STEM	COLOR	
R51-248	5/16" D	Beige	7/16" Dia. x 1-7/8" D
R51-259	3/8" D	Beige	1/2" Dia. x 1-7/8" D

## PLASTIC CASTER INSERTS Material - Polyethylene

Tube Gauges vary - always test - free samples are available

SQUARE  
INSERT

### SQUARE



STEM  
TYPE 1

5/16"  
GRIPNECK  
STEM

PART #	FITS TUBING w/O.D. DIM.	WORKS w/STEM TYPE	COLOR
1120-4	1" x 18-20 GA.	2	Black

ROUND  
INSERT

### ROUND



STEM  
TYPE 2

7/16" FRICTION  
RING STEM

PART #	FITS TUBING w/O.D. DIM.	WORKS w/STEM TYPE	COLOR
1165-1	3/4" x 20-22 GA.	1	Black
1165-4	3/4" x 20-22 GA.	2	Black
*205-PG-1318	1" x 16 GA.	2	Grey
1158-4	1" x 18 GA.	2	Black
1157-1	1" x 20-22 GA.	1	Black
1190-1	1-1/4" x 18 GA.	1	Black
1190-4	1-1/4" x 18 GA.	2	Black

\* MAY BE USED FOR WOOD APPLICATIONS

## MEDIUM DUTY R.T. CASTER INSERTS

- An alternative to diecast metal inserts.
- The reinforced thermoplastic (R.T.) construction is virtually indestructible.
- Casters can be removed & replaced continuously.
- Will work with a 7/16" friction ring stem.

### SQUARE

PART #	TUBE		MINIMUM DEPTH REQUIRED
	O.D.	GA.	
RT620SQ	3/4"	16	2-1/4"
RT0902SQ	1"	18	2-1/4"

### ROUND

PART #	TUBE		MINIMUM DEPTH REQUIRED
	O.D.	GA.	
RT125RD	1"	18	2-1/4"
RT1370RD	1-1/2"	16	2-1/4"



## SPRING STEEL GRIPNECK SLEEVES

- Designed for wood applications.
- Hold 5/16" gripneck stem casters securely.



SOCKET NUMBER	DESCRIPTION	HOLE DIAMETER
GN-505	3/4" Toothed Trackplate	3/8"

## METAL CASTER INSERTS



PART #	FITS	WORKS w/STEM TYPE
B MS-716-ZP	9/16" Hole	2
C 1159-CAST	1" RD. x 16 GA.	2
D 1190-CAST	1-1/4" RD. x 16-18 GA.	2

## STEEL BRACKETS FOR CASTERS

- Brackets can be bolted on or welded to a variety of channel or angle iron legs.
- Fits a 7/16" dia. friction stem - maximum length of 1-3/8" long.



49  
INSIDE ANGLE



81-O  
FLAT BRACKET

### ZINC PLATED

PART #  
49  
81-O



49R  
INSIDE ANGLE



81R  
FLAT BRACKET

### RAW STEEL

PART #  
49R  
81R

# SELF-STICK CASTERS & FEET

## SELF-STICK DISPLAY CASTER

- Set of 4 steel reinforced wheels hold up to 240 lbs.
- Stick surface measures 2" x 2".
- Wheels measure 1-1/4" diameter.
- Industrial grade adhesive bonds and holds permanently.
- Molded of Black HIPS.



PART #  
SA-C10

## SELF-STICK DISPLAY FOOT

- Attaches to bottom of display with a permanent self adhesive.
- Holds approximately 400 lbs. per set of four.
- Lifts displays off of the floor by 3/4".
- Size is 2" x 2".
- Made of durable polyethylene.



PART #  
SA-F10

# PLASTIC BASE LEVELERS



## WINDSOR

WHITE PE BASE  
\*-WITH HEX

With plain head



With hex head

PART #	A	B	C	D
WINDSOR-11*	1-1/8"	1/4-20	1"	.6693
WINDSOR-14	1-1/8"	1/4-20	1"	.5512
WINDSOR-21*	1-1/8"	5/16-18	1"	.6693
WINDSOR-22*	1-1/8"	5/16-18	1-1/2"	.6693

## SMALL OVAL BASE LEVELER

Material: H.D.P.E. Base

PART #	COLORS	A	B	C	D
R33-124	White	5/8"	1/4-20	1"	1/4"
R33-130	Beige or White	3/4"	1/4-20	1"	1/4"
R33-131	Beige or White	7/8"	1/4-20	1"	1/4"
R33-132	Beige or White	1"	1/4-20	1"	1/4"
R33-133	Beige	1-1/8"	1/4-20	1"	1/4"
R33-139	Beige or White	1-1/8"	1/4-20	5/8"	1/4"
R33-356	White	5/8"	1/4-20	5/8"	1/4"



## LARGE FLAT BASE LEVELER

\*-SCREW SLOT

Material:  
H.D.P.E. Base

PART #	COLORS	A	B	C	D
R33-122	Black or White	1-1/2"	5/16-18	1-1/2"	19/64"
R33-123	Black	1-1/2"	1/4-20	1"	19/64"
R33-355	Black or White	1-1/2"	1/4-20	1-1/2"	19/64"
R33-516*	Black or White	1-1/2"	3/8-16	1-1/2"	19/64"
R33-6010	Black	2"	3/8-16	1"	25/64"
R33-6011*	Black	1-3/4"	3/8-16	1-1/2"	21/64"



## SWIVEL BASE LEVELER

H.D.P.E. BASE

25° Angle

PART #	COLOR	A	B	C	D
R33-134BK	Black	1-1/8"	1/4-20	1"	.455"
R33-134WH	White	1-1/8"	1/4-20	1"	.455"



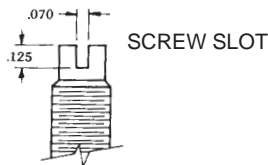
## ROBOT NON-SKID LEVELER

THERMOPLASTIC RUBBER BLACK BASE

PART #	A	B	C	D
ROBOT10	1-1/8"	1/4-20	1"	27/64"
ROBOT12	1-1/8"	5/16-18	1"	27/64"
ROBOT14	1-1/8"	3/8-16	1"	27/64"



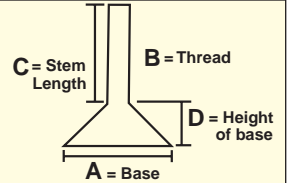
## WITH SCREW SLOT BEIGE H.D.P.E. BASE



PART #	A	B	C	D
R33-7000BE	1-1/8"	5/16-18	4"	1/4"



**LEVELER SPECIFICATIONS FOR ALL LEVELERS SHOWN:**



## WINDSOR

CLEAR K-RESIN BASE

PART #	A	B	C	D
WL78	1-1/8"	1/4-20	1"	.3937



## THICK BASE LEVELER

H.D.P.E. BASE

PART #	COLOR	A	B	C	D
R33-358BK	Black	1-1/8"	5/16-18	1-1/2"	3/8"
R33-5340BK	Black	7/8"	5/16-18	1"	1/4"



## HEX BASE LEVELER

BLACK NYLON BASE

PART #	A	B	C	D	HEX DIA.
PL4-250	1"	1/4-20	1"	27/64"	5/8"
PL4-3125	1"	5/16-18	1"	27/64"	5/8"
PL4-375	1"	3/8-16	1"	7/16"	5/8"
PL6-250	1"	1/4-20	1-1/2"	27/64"	5/8"
PL6-3125	1"	5/16-18	1-1/2"	27/64"	5/8"
PL6-375	1"	3/8-16	1-1/2"	7/16"	5/8"
PL7-250	1-1/4"	1/4-20	1"	27/64"	7/8"
PL7-3125	1-1/4"	5/16-18	1"	27/64"	7/8"
PL7-375	1-1/4"	3/8-16	1"	27/64"	7/8"
PL8-250	1-1/4"	1/4-20	1-1/2"	27/64"	7/8"
PL8-3125	1-1/4"	5/16-18	1-1/2"	27/64"	7/8"
PL8-375	1-1/4"	3/8-16	1-1/2"	27/64"	7/8"



## SLOTTED HEX LEVELER

BLACK NYLON BASE

PART #	A	B	C	D
R33-6600BK	1"	5/16-18	1-1/2"	.275



## CARPET GRIP LEVELER

BLACK NYLON BASE

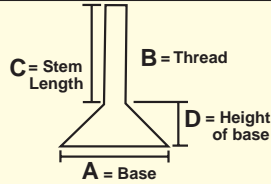
PART #	A	B	C	D
CGL-3125	1-3/4"	5/16-18	2"	.425





# METAL BASE LEVELERS

## LEVELER SPECIFICATIONS FOR ALL LEVELERS SHOWN:



### CUSHION GLIDE LEVELER

NICKEL PLATED SHELL WITH BLACK H.D.P.E. BASE

PART #	A	B	C	D
CG100	7/8"	1/4-20	1"	3/8"
CG102	1-1/16"	1/4-20	1"	3/8"
CG103	1-1/16"	5/16-18	1"	3/8"
CG104	1-1/4"	5/16-18	1"	3/8"

ZINC PLATED SHELL WITH BLACK BASE

PART #	A	B	C	D
CG105	1-1/4"	3/8-16	1"	7/16"



### MONACO SWIVEL

NICKEL PLATED WITH WHITE NYLON BASE

PART #	A	B	C	D
MONO-10	1-1/8"	1/4-20	1/2"	37/64"
MONO-11	1-1/8"	1/4-20	1"	37/64"
MONO-12	1-1/8"	5/16-18	1"	37/64"
MONO-13	1-1/8"	5/16-18	1-1/2"	37/64"
MONO-14	1-1/8"	3/8-16	1"	37/64"
MONO-15	1-1/8"	3/8-16	1-1/2"	37/64"

Swivel >



### MONACO NON SWIVEL

NICKEL PLATED WITH WHITE PE BASE

PART #	A	B	C	D
MONO-30	1-1/8"	1/4-20	1"	.6693
MONO-31	1-1/8"	5/16-18	1"	.6693
MONO-32	1-1/8"	5/16-18	1-1/2"	.6693
MONO-33	1-1/8"	3/8-16	1"	.6693
MONO-34	1-1/8"	3/8-16	1-1/2"	.6693

Non Swivel >



### MONACO ADJUSTABLE LEVELER

NICKEL PLATED WITH WHITE NYLON BASE  
SLOTTED BOLT SWIVEL WITH HEX BASE

PART #	A	B	C	D	O.A. HT.
R33-7500	1-1/2"	3/8-16	1-1/2"	5/8"	2"
R33-7510	1-1/2"	3/8-16	2-1/2"	5/8"	3"
R33-7520	1-1/2"	3/8-16	3"	5/8"	3-1/2"
R33-7530	1-1/2"	3/8-16	3-1/2"	5/8"	4"
R33-7540	1-1/2"	3/8-16	4"	5/8"	4-1/2"



### SELF ADJUSTING LEVELER

NICKEL PLATED W/WHITE BASE

- ELIMINATES WOBBLING.
- SELF LEVELING BASE IS PERFECT FOR UNEVEN FLOORS.

PART #	A	B	C	D
SAL-10	1-1/4"	1/4-20	3/4"	.3543



### TITAN

NICKEL PLATED WITH WHITE BASE

\*-WITHOUT HEX



< With plain head

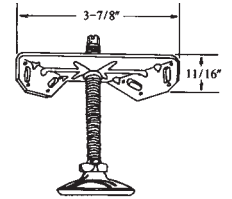


With hex head >

PART #	A	B	C	D
TITAN-10	1"	1/4-20	1"	.5512
TITAN-11*	1-3/8"	1/4-20	1"	.5906
TITAN-13*	1-11/16"	1/4-20	1"	.5906
TITAN-14	1-3/8"	5/16-18	1"	.7087
TITAN-16	1-3/8"	5/16-18	1-1/2"	.7087
TITAN-17	1-11/16"	5/16-18	1"	.7087
TITAN-19	1-11/16"	5/16-18	1-1/2"	.7087
TITAN-20	1-3/8"	3/8-16	1"	.7087
TITAN-22	1-3/8"	3/8-16	1-1/2"	.7087
TITAN-23	1-11/16"	3/8-16	1"	.7087
TITAN-25	1-11/16"	3/8-16	1-1/2"	.7087

### METAL LEVELATORS

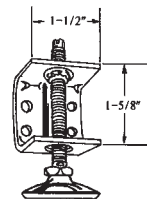
K-75- 3/8" THREAD 3" OR 4" LONG  
CORNER BRACE W/SLOTTED LEVELER & HEX NUT  
SET INCLUDES 1 BRACE & 1 LEVELER



PART #	DESCRIPTION
K-75-3	3/8" x 3" Long
K-75-4	3/8" x 4" Long

K-75 BRACE ONLY

LL-158- 3/8" THREAD 3" OR 4" LONG  
SUPPORT BRACE W/SLOTTED LEVELER & HEX NUT  
SET INCLUDES 1 BRACE & 1 LEVELER



PART #	DESCRIPTION
LL-158-3	3/8" x 3" Long
LL-158-4	3/8" x 4" Long

LL-158 BRACE ONLY  
LL-159 5/16-18 BRACE ONLY

### "BIG FOOT" LEVELER

NICKEL PLATED WITH BLACK NYLON BASE



PART #	A	B	C	D
BFL-375BK	2-1/2"	3/8-16	1-1/2"	.69"
BFL-3125BK	2-1/2"	5/16-18	1-1/2"	.69"

# "THE SMOOTH GLIDE"

Your Floors never "Felt" so Good!

The longest lasting felt glide on the market today.

- Our glides will outlast all others 3 to 1 in comparison.
- Great for table and chairs. Especially when used in commercial applications such as schools, restaurants, offices and rest areas!



## FELT BOTTOM ADJUSTABLE LEVELER

Brown PE base with Gray Felt

PART #	BASE		THREAD	STEM	HEIGHT
	A	B	C	D	
SGL-324	1"	1/4-20	1"		.455
SGL-325	1"	5/16-18	1"		.455



## FELT BOTTOM NAIL ON GLIDE

White PE base with Gray Felt

PART #	BASE	NAIL	BASE
	A	C	HEIGHT D
SGLT-24WH	24 mm (1")	1/2"	.298
SGLT-28WH	28mm (1-1/8")	1/2"	.275

## SUPER LEVELER

- The most complete and versatile types of automatic self leveling glides.
- Eliminates wobble by instantly self-leveling to any uneven surface.
- Adjusts to 1/4" of wobble.
- No manual adjustment needed.
- Corrosion resistant.
- Use indoors & outdoors.
- Built to last with high-grade impact plastic and heat treated stainless steel.
- Installs by hand- no tools needed.



PART #	THREAD SIZE	BASE DIAMETER	INSTALLED HEIGHT	MAX LOAD RATING	MOVEMENT SYSTEM
SPL-250BK	1/4"- 20 x .375"	1.28"	.92"	125 lbs per glide, 500 lbs per set	spring and ramp mechanism

## SUPER SHOCK

- Same function as the super leveler but slightly larger profile.
- Automatically adjusts up to 5/16"
- 3/8" Long threaded stem.



PART #	THREAD SIZE	BASE DIAMETER	INSTALLED HEIGHT	MAX LOAD RATING	MOVEMENT SYSTEM
SPS-250BK	1/4"-20 x .375	1.50"	1.15"	100 lbs per glide, 400 lbs per set	Hydraulic
SPS-3125BK	5/16" - 18 x .375	1.50"	1.15"	100 lbs per glide, 400 lbs per set	Hydraulic
SPS-375BK	3/8" - 16 x .375	1.50"	1.15"	100 lbs per glide, 400 lbs per set	Hydraulic

## ULTRA GLIDE SYSTEM

- Low carbon steel, zinc plated with a molded nylon base
- Pre-assembled leveling system
- Reduces cost by allowing use of a thinner side panels
- End cap resistant to loosening, making this great for shipping assembled furniture.
- Requires 5/16" drill hole size to install.



PART #  
UG-516

## CORNER BLOCK w/BARB NUT

5/16-18 THREAD  
H.D.P.E.

PART # COLOR  
R44-952BK Black



## REGAL SWIVEL GLIDE

FITS 16-18 GAUGE TUBING  
NICKEL PLATED STEEL

All glides have a nickel plated shell.  
Please specify base material:  
N = white nylon or S = steel.



PART #	BASE	FITS TUBE	FERRULE
		DIA.	HEIGHT
REGAL-10	1-1/4"	5/8"	9/16"
REGAL-11	1-1/4"	3/4"	9/16"
REGAL-12	1-1/4"	7/8"	1/2"

# CONCEALED FURNITURE LEVELERS

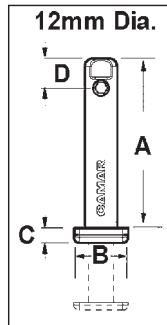
**New**

**Material: Steel**



**PRODUCT FEATURES:**

- Sturdy metal levelers won't bend when moving furniture and no need to lift furniture
- One person adjustment with #4 hex key (sold separately)
- Up to 1" height adjustment (11/16" on CFL-1125)
- 660 lb. load capacity per leveler
- Drilling template & 12 mm drill bit available



PART #	A	B	C	D
CFL-1125	1-1/4"			
CFL-2000	2"			
CFL-2875	2-7/8"	13/16" x 5/8"	7/32"	7/16"
CFL-4000	4"			
CFL-4750	4-3/4"			

PART #	DESCRIPTION
CFL-HEX	#4 Hex Key for concealed furniture leveler
CFL-TEMP	Drill Template for concealed furniture leveler
CFL-BIT	12mm Drill Bit for concealed furniture leveler

## INSTALLATION

**1**  
CFL-TEMP

Use the Template to drill the placement hole.

**2**  
CFL-BIT  
CFL-TEMP

Drill the adjustment hole.

**3**  
LEVELER

Insert 12mm Concealed Leveler into placement hole.

**4**  
CFL-HEX

Adjust as needed through adjustment hole.

# HEAVY DUTY FURNITURE LEVELERS

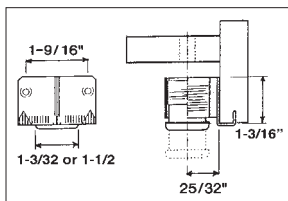
**New**

**Material: Iron Leveler with ABS Foot**



**PRODUCT FEATURES:**

- For wall units & furniture
- 220 lbs. or 330 lbs. capacity per leveler
- 3/4" height adjustment



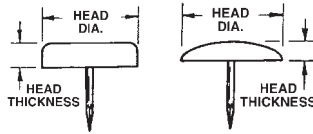
PART #	LOAD CAPACITY	FOOT DIAMETER
LL-220L	220 lbs.	1-3/32"
LL-330L	330 lbs.	1-1/2"

LL-220L installs with 6mm Hex head screws (not included)  
 LL-330L installs with 6# Panhead screws (not included)

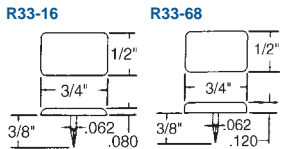
# GLIDES

## PLASTIC HEADED TACKS

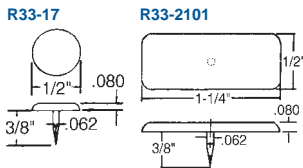
Material: H.D.P.E.



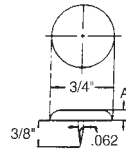
PART #	COLOR	HEAD		NAIL			
		SHAPE	DIA.	THICK.	DIA.	LENGTH	SHARP
R33-72WH	White	Oval	1/2"	3/16"	.072	11/16"	x
R33-72BE	Beige	Oval	1/2"	3/16"	.072	11/16"	x
R33-70BE	Beige	Oval	1/2"	1/4"	.072	11/16"	x
R33-73WH	White	Oval	5/8"	3/16"	.072	11/16"	x
R33-73BE	Beige	Oval	5/8"	3/16"	.072	11/16"	x
R33-18WH	White	Flat	5/8"	3/16"	.072	11/16"	x
R33-18BE	Beige	Flat	5/8"	3/16"	.072	11/16"	x
R33-91WH	White	Flat	5/8"	1/4"	.072	11/16"	x
R33-91BE	Beige	Flat	5/8"	1/4"	.072	11/16"	x
R33-2018DBR	Dk. Brown	Flat	5/8"	1/4"	.072	1/2"	x
R33-74BE	Beige	Oval	3/4"	3/16"	.072	11/16"	x
R33-19WH	White	Flat	3/4"	3/16"	.072	11/16"	x
R33-19BE	Beige	Flat	3/4"	3/16"	.072	11/16"	x
R33-92WH	White	Flat	3/4"	1/4"	.072	11/16"	x
R33-92BE	Beige	Flat	3/4"	1/4"	.072	11/16"	x
R33-75WH	White	Oval	7/8"	3/16"	.072	11/16"	x
R33-75BE	Beige	Oval	7/8"	3/16"	.072	11/16"	x
R33-79WH	White	Oval	7/8"	3/16"	.072	1/2"	x
R33-79BE	Beige	Oval	7/8"	3/16"	.072	1/2"	x
R33-20BE	Beige	Flat	7/8"	3/16"	.072	11/16"	x
R33-93WH	White	Flat	7/8"	1/4"	.072	11/16"	x
R33-93BE	Beige	Flat	7/8"	1/4"	.072	11/16"	x
R33-94WH	White	Oval	1"	3/16"	.072	11/16"	x
R33-94BE	Beige	Oval	1"	3/16"	.072	11/16"	x



PART #	COLOR
R33-16BE	Beige
R33-16WH	White
R33-17BE	Beige
R33-68BE	Beige

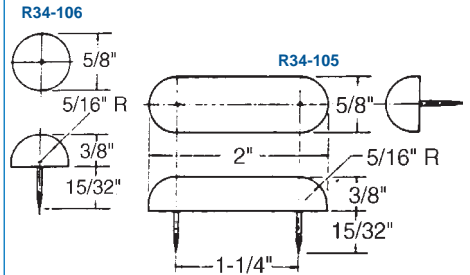


PART #	A	COLOR
R33-579BR	1/8"	Brown
R33-580BR	3/16"	Brown
R33-600BR	3/32"	Brown



## PLASTIC NAIL BUMPERS

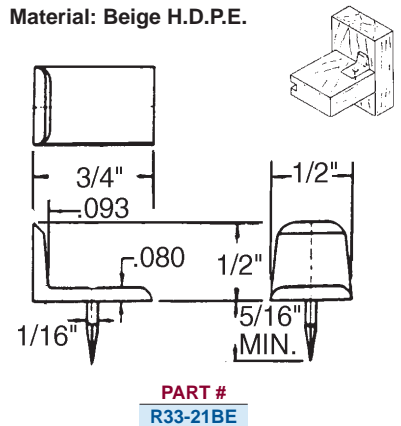
Material: H.D.P.E.



PART #	COLOR
R34-106BR	Brown
R34-106WH	White
R34-105BR	Brown
R34-105WH	White

## PLASTIC CORNER GLIDE

Material: Beige H.D.P.E.



PART #
R33-21BE

## 1 or 3 PRONG NAIL-ON GLIDES NICKEL PLATED STEEL

**1-PRONG GLIDES** are precision stamped with shanks tightly wedged into heavy heads. Points are sharp-easily driven. Supplied in high quality nickel plated steel.



PART #	A	B
H-12	1/2"	1/2"
H-58	5/8"	5/8"
H-34	3/4"	3/4"

**3-PRONG GLIDES** are measured according to inside diameter, thus oversized. Precision stamped with long, sharp prongs. Supplied in heavy gauge, high quality nickel plated steel.



PART #	A	B	C
HGL-58	5/8"	13/64"	13/64"
HGL-34	3/4"	13/64"	1/4"
HGL-78	7/8"	1/4"	15/64"

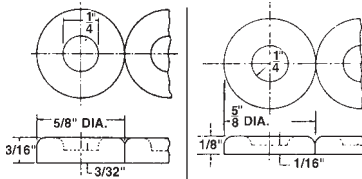
## NAIL-ON CUSHION GLIDES NICKEL PLATED BASE WITH RUBBER CUSHION

Nail-On Glides with rubber cushion provides maximum floor protection, reduces vibration and noise and absorbs shock. Supplied with nickel plated base.

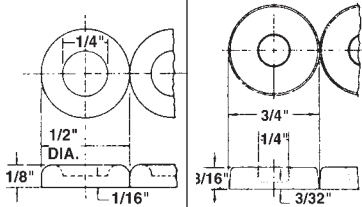


NICKEL PLATED NAIL-ON CUSHION GLIDE			
PART #	BASE DIA.	BASE HT.	NAIL LENGTH
NCG-875	7/8"	13/32"	.740"
NCG-1062	1-1/8"	13/32"	.675"

## STAPLE-ON STRIP GLIDE

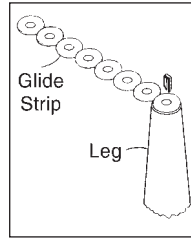


**R32-117** 5/8" DIA. **R32-127** 5/8" DIA.



**R32-129** 1/2" DIA. **R32-449** 1/2" DIA.

- **Material: H.D.P.E.**
- Strip glides are molded 8 glides per strip for easy installation.
- Position first glide on leg. Hold remaining strip in your hand and drive staple through glide into the leg.
- Lift and twist remaining strip off.
- Use galvanized staples to prevent rust.
- Use staples at least 3/4" long.

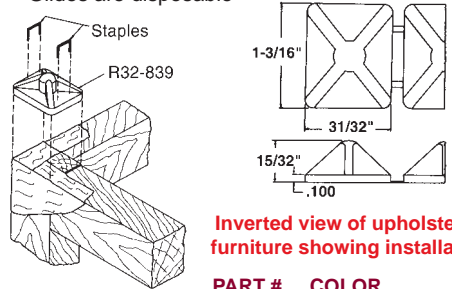


**Lift, twist & separate strip from installed glide**

PART #	COLOR
R32-117BE	Beige
R32-127BE	Beige
R32-449WH	White
R32-449DB	Dk. Brown

## IN-PLANT FLOOR GLIDE

- **Material: H.D.P.E.**
- Use to make moving furniture easier during manufacturing
- Glide is stapled to frame rail or stretcher
- Glides are disposable

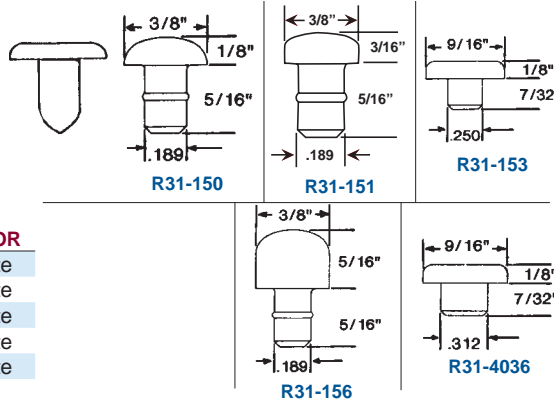


**Inverted view of upholstered furniture showing installation**

PART #	COLOR
R32-839	White

## STUD TYPE BUTTON GLIDES

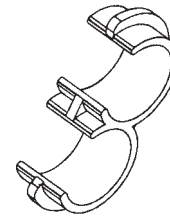
- **Material: H.D.P.E.**
- Slippery, self-lubricating plastic glide.
- Glides are soft, yet tough and resilient.
- Button glides install into a round drilled or punched hole.
- May be installed in wood, sheet metal or other materials.



PART #	COLOR
R31-150WH	White
R31-151WH	White
R31-153WH	White
R31-156WH	White
R31-4036WH	White

## GANGING CLIP

**Material: H.D.P.E**



Designed for connecting 1" round chair legs together so chairs stay even in rows. Can also be used for 1" round tubing. To install simply snap into place.

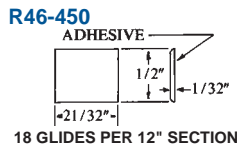
PART #
1912-BK

## ADHESIVE GLIDE STRIPS

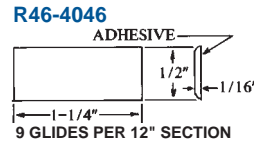
- **Material: H.D.P.E.**
- Smooth gliding action after application.
- Used under glass tops where sliding action is needed, in heavy wood drawers where nailing is difficult and in metal drawers when drilling is to be avoided.

PART #	COLOR
R46-450OW	Off White
R46-4046OW	Off White
R46-4046BK	Black
R46-4023OW	Off White
R46-4023BK	Black

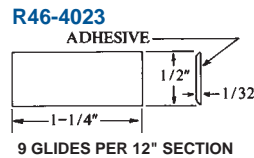
- Material is supplied in 12" sections.
- Glides can be peeled off one at a time.



**R46-450** 18 GLIDES PER 12" SECTION



**R46-4046** 9 GLIDES PER 12" SECTION



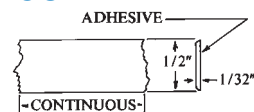
**R46-4023** 9 GLIDES PER 12" SECTION

## CONTINUOUS COIL



- **Material: H.D.P.E.**
- One piece glide strip.
- Coil may be cut to desired length.

PART #	COLOR
R46-451OW	Off White

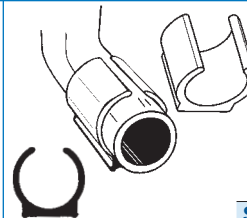


## SNAP GLIDE

**BUTYRATE - CLEAR**  
1" x 1" Long

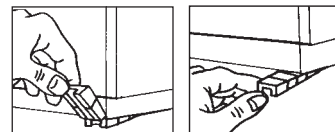
This useful shape is made to snap fit onto round tubing. Such as horizontal legs of chair, to protect floors.

PART #	COLOR
SNAPGLIDE-CL	Clear



## BREAK-AWAY PLASTIC FURNITURE WEDGE

**Material: Polystyrene**



PART #	COLOR
58-076-400	Dk. Brown

## FLOOR GLIDE AND PROTECTOR

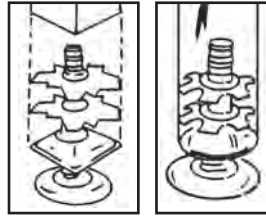


- **Material: Polyethylene**
- Staple to underside of cabinets or furniture
- Prevents damage to cabinets during handling and transportation.
- 1/4" (60mm) of clearance between cabinet and floor

PART #	SIZE	COLOR
R32-737	1-1/2"	Natural

# DOUBLE STAR METAL TUBE CONNECTORS w/THREAD

- Metal startype inserts are designed to insert inside steel tubular legs.
- These inserts are available in various sizes to fit 16 or 18 gauged steel tubing and thread size.
- External edges fit flush with outside edge of tubing for a clean, finished appearance.



**IDEAL FOR CASTERS!**

## SQUARE DS71 SERIES

### 5/16-18 THREAD



PART #	THREAD	OUTSIDE DIA. OF TUBE	GAUGE OF TUBE
DS71-244	5/16-18	3/4"	16/18
DS71-325	5/16-18	1"	16/18
DS71-365	5/16-18	1-1/8"	16/18
DS71-404	5/16-18	1-1/4"	16/18
DS71-484	5/16-18	1-1/2"	16/18
DS71-644	5/16-18	2"	16/18

### 3/8-16 THREAD



PART #	THREAD	OUTSIDE DIA. OF TUBE	GAUGE OF TUBE
DS71-326	3/8-16	1"	16/18
DS71-366	3/8-16	1-1/8"	16/18
DS71-406	3/8-16	1-1/4"	16/18
DS71-486	3/8-16	1-1/2"	16/18
DS71-646	3/8-16	2"	16/18

## ROUND DS72 SERIES

### 5/16-18 THREAD



PART #	THREAD	OUTSIDE DIA. OF TUBE	GAUGE OF TUBE
DS72-244	5/16-18	3/4"	16/18
DS72-325	5/16-18	1"	16/18
DS72-365	5/16-18	1-1/8"	16/18
DS72-404	5/16-18	1-1/4"	16/18
DS72-484	5/16-18	1-1/2"	16/18
DS72-644	5/16-18	2"	16/18

### 3/8-16 THREAD

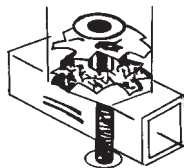


PART #	THREAD	OUTSIDE DIA. OF TUBE	GAUGE OF TUBE
DS72-326	3/8-16	1"	16/18
DS72-366	3/8-16	1-1/8"	16/18
DS72-406	3/8-16	1-1/4"	16/18
DS72-486	3/8-16	1-1/2"	16/18
DS72-646	3/8-16	2"	16/18

## METAL TUBE CONNECTORS



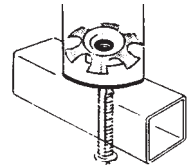
- Heavy duty tube connector application.
- "Double" star tube connectors are designed to grip inside of round or square steel tubing.



PART#	MEMBER O.D. FLAT TO FLAT	THREAD	GAUGE OF TUBE
S67-244	3/4"	1/4-20	16/18
S67-324	1"	1/4-20	16/18
S67-404	1-1/4"	1/4-20	16/18



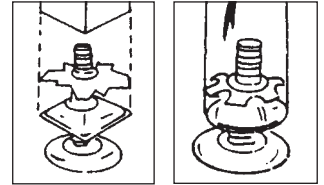
- Light duty tube connector application.
- Washers grip inside of round steel tubing.



PART#	MEMBER O.D. FLAT TO FLAT	THREAD	GAUGE OF TUBE
S73-244	3/4"	1/4-20	16/18
S73-324	1"	1/4-20	16/18

# METAL THREADED STARTYPE INSERTS

- Metal startype inserts are designed to insert inside steel tubular legs.
- These inserts are available in various sizes to fit 16 or 18 gauged steel tubing and thread size.
- External edges fit flush with outside edge of tubing for a clean, finished appearance.



## SQUARE S62/S71 SERIES



PART #	SQUARE	OUTSIDE DIA. OF TUBE	GAUGE OF TUBE	PART #	SQUARE	OUTSIDE DIA. OF TUBE	GAUGE OF TUBE
S71-244	1/4-20	3/4"	16/18	S71-405	5/16-18	1-1/4"	16/18
S62-284	1/4-20	7/8"	16/18	S71-485	5/16-18	1-1/2"	16/18
S71-324	1/4-20	1"	16/18	S71-645	5/16-18	2"	16/18
S62-364	1/4-20	1-1/8"	16/18	S62-286	3/8-16	7/8"	16/18
S71-404	1/4-20	1-1/4"	16/18	S71-326	3/8-16	1"	16/18
S71-484	1/4-20	1-1/2"	16/18	S62-366	3/8-16	1-1/8"	16/18
S71-644	1/4-20	2"	16/18	S71-406	3/8-16	1-1/4"	16/18
S62-285	5/16-18	7/8"	16/18	S71-486	3/8-16	1-1/2"	16/18
S71-325	5/16-18	1"	16/18	S71-646	3/8-16	2"	16/18
S62-365	5/16-18	1-1/8"	16/18				

## ROUND S63/S72 SERIES



PART #	ROUND	OUTSIDE DIA. OF TUBE	GAUGE OF TUBE	PART #	ROUND	OUTSIDE DIA. OF TUBE	GAUGE OF TUBE
S72-244	1/4-20	3/4"	16/18	S72-405	5/16-18	1-1/4"	16/18
S63-284	1/4-20	7/8"	16/18	S72-485	5/16-18	1-1/2"	16/18
S72-324	1/4-20	1"	16/18	S72-645	5/16-18	2"	16/18
S63-364	1/4-20	1-1/8"	16/18	S63-725	5/16-18	2-1/4"	16/18
S72-404	1/4-20	1-1/4"	16/18	S63-805	5/16-18	2-1/2"	16/18
S72-484	1/4-20	1-1/2"	16/18	S63-286	3/8-16	7/8"	16/18
S72-644	1/4-20	2"	16/18	S72-326	3/8-16	1"	16/18
S63-724	1/4-20	2-1/4"	16/18	S63-366	3/8-16	1-1/8"	16/18
S63-804	1/4-20	2-1/2"	16/18	S72-406	3/8-16	1-1/4"	16/18
S63-285	5/16-18	7/8"	16/18	S72-486	3/8-16	1-1/2"	16/18
S72-325	5/16-18	1"	16/18	S63-566	3/8-16	1-3/4"	16/18
S63-365	5/16-18	1-1/8"	16/18	S72-646	3/8-16	2"	16/18
				S63-726	3/8-16	2-1/4"	16/18

# METAL THREADED GRATER CLIPS

- Square metal threaded grater clips are designed to insert inside square steel tubing.
- External edges fit flush with the outside lip of tubing.
- These clips are available in various sizes to fit 16 or 18 gauge steel tubing and various thread sizes.
- Other gauges are available through special order. Minimums apply -please inquire.
- These clips are barbed and flexible for fastening.
- Heat treated and plated to resist rusting (steel with .060 thickness).

## \*FOUR-SIDED (HEAVY DUTY)



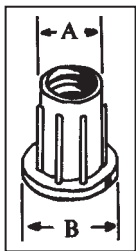
### FOUR-SIDED

PART#	OUTSIDE DIM. OF TUBE	GAUGE OF TUBING	THREAD HOLE SIZE
S645-324	1"	16,18	1/4-20



\* NOTE: Four sided grater clips can be used as caster inserts in light duty applications.

PART#	OUTSIDE DIM. OF TUBE	GAUGE OF TUBING	THREAD HOLE SIZE
S65-324	1"	16,18	1/4-20
S65-325	1"	16,18	5/16-18
S65-326	1"	16,18	3/8-16
S65-404	1-1/4"	16,18	1/4-20
S65-405	1-1/4"	16,18	5/16-18
S65-406	1-1/4"	16,18	3/8-16
S65-486	1-1/2"	16,18	3/8-16



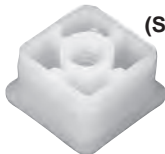
## PLASTIC THREADED INSERT CAPS

Material: Nylon  
3/8" HOLE - 1/4-20 THREAD

PART#	DIMENSIONS	
	A	B
PG-1	3/8"	1/2"

## SQUARE

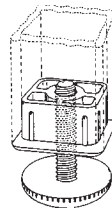
- Square threaded insert cap designed to fit 16 or 18 gauge.
- Caps fit inside square steel tubing.



(S27-265WH)



(S27-268BK)



### NYLON CAP WITH METAL THREAD:

PART#	OUTSIDE DIM. OF TUBE	GAUGE OF TUBING	THREAD	COLOR
S27-268BK	1"	18	1/4-20	Black

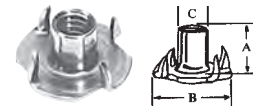
### NYLON CAP WITH NYLON THREAD:

PART#	OUTSIDE DIM. OF TUBE	GAUGE OF TUBING	THREAD	COLOR
S27-265WH	1"	16	1/4-20	White
S27-269BK	1"	18	5/16-18	Black

## METAL THREADED INSERTS

### TEE NUTS

- Tee nuts are an economical method of fastening a threaded stem leveler to a wood component.
- 4 prong tee nuts can be used in either hard or soft wood.



PART#	THREAD	DIMENSIONS		
		A	B	C
T-NUT250	1/4-20	5/16"	3/4"	5/16"
T-NUT3125	5/16-18	3/8"	7/8"	3/8"
T-NUT375	3/8-16	7/16"	1"	1/2"

### PROPELLER NUTS

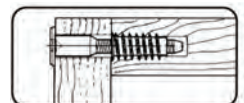
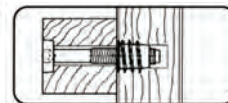
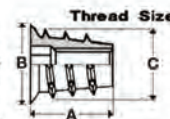
- Propeller nuts provide excellent retention for blind applications such as levelers.
- Can be used in hard plastic applications.



PART#	THREAD	DIMENSIONS	
		A	B
P-NUT250	1/4-20	1/2"	5/8"
P-NUT3125	5/16-18	3/8"	7/8"
P-NUT375	3/8-16	7/16"	1"

## INSERT NUTS

- Available with & without flange.
- Offers high retention values in blind & edge grain applications.
- Features hex drive for quick engagement.
- With flange allows for flush applications; without flange allows insert to be set below the surface.
- May be used with threaded stem casters.



PART#	TYPE	THREAD	DIMENSIONS		
			A	B	C
I-NUT250	No Flange	1/4-20	.512"	-	.453"
I-NUT3125	No Flange	5/16-18	.512"	-	.559"
I-NUT250F	With Flange	1/4-20	.512"	.492"	.461"
I-NUT3125F	With Flange	5/16-18	.512"	.571"	.531"
I-NUT375F	With Flange	3/8-16	.512"	.630"	.594"



# ABS CHROME-PLATED INSERT CAP GLIDES

- ABS CHROME-PLATED INSERT CAP GLIDES ARE DESIGNED TO INSERT INSIDE STEEL TUBING FOR HEAVY DUTY APPLICATIONS.
- THESE CAPS ARE AVAILABLE IN VARIOUS SIZES TO FIT YOUR APPROPRIATE GAUGE STEEL TUBING.

- WILL NOT TARNISH OR RUST!
- SHINY, BRITE MIRROR-LIKE FINISH.
- OTHER SIZES & FINISHES AVAILABLE ON A SPECIAL ORDER BASIS - MINIMUMS APPLY - PLEASE INQUIRE.

## S59 SERIES - SQUARE INSERT CAPS



PART #	OUTSIDE DIA. OF TUBE	GAUGE OF TUBING	FINISH
S59-3216CH	1"	16	Chrome
S59-3218CH	1"	18	Chrome

## S60 SERIES - ROUND INSERT CAPS



PART #	OUTSIDE DIA. OF TUBE	GAUGE OF TUBING	FINISH
S60-3214CH	1"	14	Chrome
S60-3216CH	1"	16	Chrome
S60-3218CH	1"	18	Chrome

## S61 SERIES - RECTANGULAR INSERT CAPS

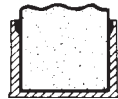


PART #	OUTSIDE DIA. OF TUBE	GAUGE OF TUBING	FINISH
S61-16-4818CH	1/2" x 1-1/2"	18	Chrome
S61-32-6416CH	1" x 2"	16	Chrome

## PLASTIC CAPS

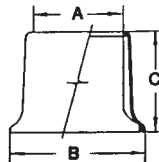
### SQUARE CAPS

\* Black (BK) or White (WH)  
Material: Low Density Polyethylene



PART #	FITS OVER TUBING
S-16*	1/2"
S-20*	5/8"
S-24*	3/4"
S-32-BK	1"
S-32-WH	1"

### LEG PROTECTORS



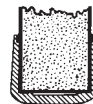
**BLACK**  
Material: Low Density Polyethylene

PART #	DIMENSIONS		
	A	B	C
R71-510	2"	3-1/8"	2-1/2"
R71-511	2-1/4"	3-3/8"	2-1/2"
R71-512	2-1/2"	3-5/8"	2-1/2"

### HEAVY DUTY CAPS

\* Black (BK) or White (WH)

Material: Low Density Polyethylene



\* Black (BK) or White (WH)

(5/8" Tall)

PART #	IRON PIPE	FITS OVER TUBING
AG-12*	1/8"	3/8"
AG-16*	1/4"	1/2"
AG-20*	3/8"	5/8"
AG-24*	-	3/4"
AG-28*	-	7/8"
AG-32*	3/4"	1"
AG-36*	-	1-1/8"
AG-40*	1"	1-1/4"
AG-48*	-	1-1/2"
AG-52-BK	1-1/4"	1-5/8"
AG-52-WH	1-1/4"	1-5/8"
AG-56*	-	1-3/4"

(1" Tall)

PART #	FITS OVER TUBING
AH-20*	5/8"
AH-24*	3/4"
AH-28-BK	7/8"
AH-28-WH	7/8"
AH-32*	1"

### WIRE TIPS

\* Black (BK) or White (WH)  
Material: Vinyl



PART #	FITS OVER WIRE
AW-6*	3/16"
AW-8-BK	1/4"

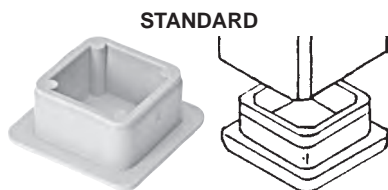
# ABS INSERT CAP GLIDES

Available in Black, White & Fashion Gray

- ABS plastic end cap/glides are designed to insert inside steel tubing for heavy duty applications.
  - ABS - hard plastic, matte finish.
- The two ideal uses for insert caps are floor glides and tubing end caps.
  - Other colors are available - please inquire.

## S50-SERIES

### SQUARE



#### APPLICATION



#### PLEASE NOTE:

Most caps stocked in  
**BLACK ONLY.**  
Minimums apply for White  
or Fashion Gray.  
Please inquire.

All sizes shown are outside  
dimensions of tube.

IF UNSURE OF GAUGE SIZE,  
FORWARD A SAMPLE OF  
TUBING WITH ORDER

BLACK-(\*BK)  
WHITE-(\*WH)  
FASHION GRAY-(\*FG)

PART#	OUTSIDE DIM. OF TUBE	GAUGE OF TUBING
S50-1616*	1/2"	16
S50-1618*	1/2"	18
S50-2016*	5/8"	16
S50-2018*	5/8"	18
S50-2414*	3/4"	14
S50-2416*	3/4"	16
S50-2418*	3/4"	18
S50-2816*	7/8"	16
S50-3211*	1"	11
S50-3214*	1"	14
S50-3216*	1"	16
S50-3218*	1"	18
S50-3614*	1-1/8"	14
S50-3616*	1-1/8"	16
S50-3618*	1-1/8"	18
S50-4011*	1-1/4"	11
S50-4014*	1-1/4"	14
S50-4016*	1-1/4"	16
S50-4018*	1-1/4"	18
S50-4811*	1-1/2"	11
S50-4814*	1-1/2"	14
S50-4816*	1-1/2"	16
S50-4818*	1-1/2"	18
S50-5611*	1-3/4"	11
S50-5614*	1-3/4"	14
S50-5616*	1-3/4"	16
S50-6411*	2"	11
S50-6414*	2"	14
S50-6416*	2"	16
S50-7216*	2-1/4"	16
S50-9611*	3"	11
S50-9614*	3"	14

## S53-SERIES

### ROUND



#### APPLICATION



BLACK-(\*BK)  
WHITE-(\*WH)  
FASHION GRAY-(\*FG)

PART#	OUTSIDE DIM. OF TUBE	GAUGE OF TUBING
S53-2018*	5/8"	18
S53-2416*	3/4"	16
S53-2418*	3/4"	18
S53-2814*	7/8"	14
S53-2816*	7/8"	16
S53-2818*	7/8"	18
S53-3214*	1"	14
S53-3216*	1"	16
S53-3218*	1"	18
S53-4014*	1-1/4"	14
S53-4018*	1-1/4"	18
S53-4814*	1-1/2"	14
S53-4816*	1-1/2"	16
S53-4818*	1-1/2"	18
S53-4820*	1-1/2"	20
S53-5618*	1-3/4"	18
S53-6416*	2"	16
S53-6418*	2"	18
S53-9611*	3"	11
S53-9616*	3"	16

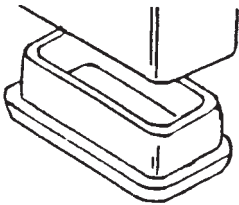
# RECTANGULAR ABS INSERT CAP GLIDES

Available in Black, White & Fashion Gray

- Rectangular ABS plastic end cap/glides are designed to insert inside steel tubing for heavy duty applications.
  - ABS - hard plastic, matte finish.
- The two ideal uses for rectangular insert caps are floor glides and tubing end caps.
  - Other colors are available - please inquire.

## S56- SERIES

STANDARD



APPLICATION



	PART#	OUTSIDE DIM. OF TUBE	GAUGE OF TUBING
BLACK-(*BK)	S56-12-3220*	3/8" x 1"	20
WHITE-(*WH)	S56-16-3216*	1/2" x 1"	16
FASHION GRAY-(*FG)	S56-16-4816*	1/2" x 1-1/2"	16
	S56-16-4818*	1/2" x 1-1/2"	18
	S56-24-4816*	3/4" x 1-1/2"	16
	S56-32-4814*	1" x 1-1/2"	14
	S56-32-4815*	1" x 1-1/2"	15
	S56-32-4816*	1" x 1-1/2"	16
	S56-32-4818*	1" x 1-1/2"	18
	S56-32-6414*	1" x 2"	14
	S56-32-6416*	1" x 2"	16
	S56-32-6418*	1" x 2"	18
	S56-32-9611*	1" x 3"	11
	S56-32-9614*	1" x 3"	14
	S56-32-9616*	1" x 3"	16
	S56-40-6416*	1-1/4" x 2"	16
	S56-48-6411*	1-1/2" x 2"	11
	S56-48-8011*	1-1/2" x 2-1/2"	11
	S56-48-9611*	1-1/2" x 3"	11
	S56-48-9614*	1-1/2" x 3"	14
	S56-64-9611*	2" x 3"	11

**PLEASE NOTE:**

Most caps stocked in BLACK ONLY. Minimums apply for White or Fashion Gray. Please inquire.

All sizes shown are outside dimensions of tube.

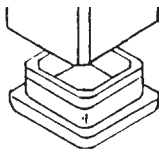
IF UNSURE OF GAUGE SIZE, FORWARD A SAMPLE OF TUBING WITH ORDER

## BLACK BUTYRATE INSERT CAP GLIDES

- Butyrate plastic end cap/glides are designed to insert inside steel tubing for heavy duty applications.
- Butyrate - hard plastic, gloss finish.
  - The two ideal uses for insert caps are floor glides and tubing end caps.
  - Other sizes are available in Poly & ABS - please inquire.

## S51- SERIES

SQUARE



	PART#	OUTSIDE DIM. OF TUBE	GAUGE OF TUBE	COLOR
	S51-3216BK	1"	16	Black
	S51-3216CL	1"	16	Clear

NOTE: Shown are outside dimensions of tube.

NOTE: IF UNSURE OF GAUGE SIZE, FORWARD A SAMPLE OF TUBING WITH ORDER.

# NICKEL-PLATED METAL SPRING CAPS

- NICKEL-PLATED METAL SPRING CAPS ARE DESIGNED TO INSERT INSIDE STEEL TUBING.
- FITS 16 OR 18 GAUGE TUBING.
- THESE CAPS HAVE A SHINY, BRIGHT FINISH.

- THESE CAPS FIT FLUSH WITH EDGE AND PROVIDE AN EXCELLENT FINISH FOR TUBE ENDS.
- OTHER FINISHES ARE AVAILABLE ON A SPECIAL ORDER BASIS - PLEASE INQUIRE.

## RAW HEAT TREATED ROUND SPRING CAPS

PART#	OUTSIDE DIA. OF TUBE	GAUGE OF TUBING	FINISH
S70-32HT	1"	16, 18	Raw Metal

## S68 SERIES - SQUARE FLAT METAL SPRING CAPS



PART#	OUTSIDE DIA. OF TUBE	GAUGE OF TUBING	FINISH
S68-24NP	3/4"	16, 18	Nickel Plated
S68-32NP	1"	16, 18	Nickel Plated

## S70 SERIES - ROUND DOMED METAL SPRING CAPS



PART#	OUTSIDE DIA. OF TUBE	GAUGE OF TUBING	FINISH
S70-16NP	1/2"	16, 18	Nickel Plated
S70-20NP	5/8"	16, 18	Nickel Plated
S70-24NP	3/4"	16, 18	Nickel Plated
S70-28NP	7/8"	16, 18	Nickel Plated
S70-32NP	1"	16, 18	Nickel Plated
S70-40NP	1-1/4"	16, 18	Nickel Plated
S70-48NP	1-1/2"	16, 18	Nickel Plated
S70-64NP	2"	16, 18	Nickel Plated

## SHARK FINNED INSERT CAPS

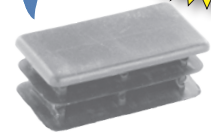


- LOW-DENSITY POLYETHYLENE
- PERFECT FOR ODD GAUGE TUBING.
- FITS FROM 12 TO 23 GAUGE TUBING.
- COLOR - BLACK AND WHITE OPTIONS



### RECTANGLE

PART #	TUBE O.D.	GAUGE
SHK-12RT-BK	1" x 2"	12-18
DNW-RT3264-BK	1" x 2"	14-23
DNW-RT3264-WH	1" x 2"	14-23



### ROUND



PART #	TUBE O.D.	GAUGE
SHK-24R-BK	3/4"	12-18
DNW-R28-BK	7/8"	14-23
DNW-R28-WH	7/8"	14-23
SHK-32R-BK	1"	12-18
DNW-R32-BK	1"	14-23
DNW-R32-WH	1"	14-23
SHK-40R-BK	1-1/4"	12-18
SHK-48R-BK	1-1/2"	12-18
SHK-56R-BK	1-3/4"	12-18
SHK-80R-BK	2-1/2"	12-18

### SQUARE

PART #	TUBE O.D.	GAUGE
DNW-S24-BK	3/4"	14-23
DNW-S24-WH	3/4"	14-23
SHK-32S-BK	1"	12-18
DNW-S32-BK	1"	14-23
DNW-S32-WH	1"	14-23
SHK-40S-BK	1-1/4"	12-18
SHK-48S-BK	1-1/2"	12-18
DNW-S48-BK	1-1/2"	14-23
DNW-S48-WH	1-1/2"	14-23
SHK-64S-BK	2"	12-18



## UNIVERSAL INSERT CAPS

- FITS FROM 14-23 GAUGE TUBING.
- PROVIDES POSITIVE FIT.
- PERFECT FOR ODD GAUGE TUBING (ex. 15 Gauge, 17 Gauge, etc).

- ADVANCED TEXTURED TOP, RESISTS SCARRING & SCRATCHING.
- ALL SIZES STOCKED IN BLACK AND WHITE UNLESS SPECIFIED.
- LOW-DENSITY POLYETHYLENE.

### FOR RECTANGULAR TUBING



\* Black (BK) or White (WH)

PART #	TUBE O.D.
P32-U64*	1" x 2"
RCR-12RT-WH^	1" x 2"
P32-U96-BK	1" x 2"
P48-U96*	1" x 3"
P64-U112-BK	1-1/2" x 3"
P64-U96*	2" x 3"

\* Fits 11-19 Gauge Tubing

### FOR SQUARE TUBING

\* Black (BK) or White (WH)

PART #	TUBE O.D.
T24-U2*	3/4"
T28-U2*	7/8"
T32-U2*	1"
T40-U2*	1-1/4"
T48-U2*	1-1/2"
T64-U2*	2"
T80-U2-BK	2-1/2"



### FOR ROUND TUBING \* Black (BK) or White (WH)



PART #	TUBE O.D.
C20-U21*	5/8"
C24-U21*	3/4"
C28-U21*	7/8"
C32-U21*	1"
C40-U21*	1-1/4"
C48-U21*	1-1/2"
C56-U21-BK	1-3/4"



PART #	TUBE O.D.
C16-U2*	1/2"
C20-U2*	5/8"
C24-U2*	3/4"
C28-U2*	7/8"
C32-U2*	1"
C36-U2-BK	1-1/8"
C40-U2*	1-1/4"
C48-U2*	1-1/2"
C56-U2*	1-3/4"
C64-U2-BK	2"

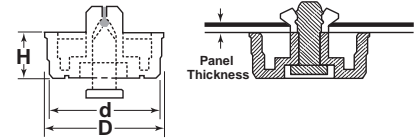
# BLACK RIVET FEET

## NYLON/TPE

**Rivet Material:** Nylon 6

**Foot Material:** TPE

- Ideal for use with corrugated displays and small table top appliances and test equipment.
- Use with thin gauge metal for toaster ovens, blenders, food processors, cabinets, etc.
- Feet are supplied with incorporated push rivets to quickly and easily install into pre-drilled holes.
- Can be removed by pushing the plunger back thru from the opposite side.



PART #	PANEL THICKNESS	HOLE DIA.	d	D	H
RF29-100BK	.031"-.071"	.122"-.126"	.531"	.559"	.217"
RF29-110BK	.031"-.071"	.161"-.165"	.79"	.827"	.165"
RF29-115BK	.071"-.110"	.161"-.165"	.79"	.827"	.165"
RF29-120BK	.114"-.146"	.161"-.165"	.79"	.827"	.165"
RF29-125BK	.150"-.189"	.161"-.165"	.79"	.827"	.165"
RF29-130BK	max .02"	.161"-.165"	.551"	.591"	.236"
RF29-140BK	.039"-.079"	.161"-.165"	.551"	.591"	.236"
RF29-150BK	.031"-.047"	.200"-.205"	.551"	.591"	.236"
RF29-155BK	.051"-.091"	.200"-.205"	.551"	.591"	.236"
RF29-160BK	.031"-.071"	.161"-.165"	.79"	.827"	.236"
RF29-180BK	.039"-.079"	.161"-.165"	.79"	.827"	.315"
RF29-195BK	.039"-.079"	.161"-.165"	.551"	.591"	.354"
RF29-225BK	.059"-.087"	.142"-.146"	.394"	.425"	.157"

# LOW PROFILE GLIDE

## PVC/polystyrol/polysterene

- Non-skid
- Non-marring
- Safe for hardwoods & tile floors.
- Single screw application
- Extremely low profile only 3/8" height
- Works with 3/16" x 1" screw - NOT INCLUDED



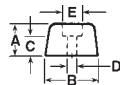
PART #	DIAMETER
LPG-24BK	24mm
LPG-28BK	28mm

Also available in brown and white, minimum required - please inquire.

# BLACK RUBBER-LIKE NON SKID CASE FEET

## • POLYLASTOMER®

- Use on: bread boxes, cutting boards, cook book holders, etc.
- Also used as heavy duty bumpers for hinged & sliding doors.
- Use wood or machine screws (See screw chart below).
- Other sizes available - please inquire.
- Approximately 1/4" high.

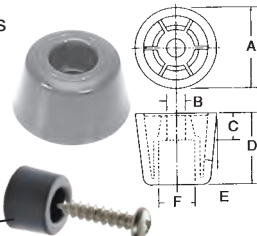


PART #	APPROX. BOTTOM DIA.	A	B	C	D	E	USES SCREW
R29-0075	3/8"	.22"	.39"	.14"	.13"	.30"	#4 PAN
R29-0421	1/2"	.25"	.50"	.10"	.15"	.28"	A
R29-0425	3/4"	.28"	.75"	.16"	.17"	.38"	B
R29-0425BR	3/4"	.28"	.75"	.16"	.17"	.38"	B
R29-0447	1"	.31"	1.00"	.13"	.18"	.60"	B

# PLASTIC SLIPPERY CASE FEET

## • Material: High Density Polyethylene

- Ideal use: Floor glides on movable furniture.
- Easily attached to wood, metal or plastic with wood screws (not included).
- Multi-ribbed design gives exceptional strength for heavy loads.
- Use wood or machine screws (See screw chart below).



## BROWN & BLACK

PART #	A	B HOLE DIA.	C	D TAPER	E	F	USES SCREW	COLOR
R29-140BK	7/8"	13/64"	1/4"	1/2"	10"	3/8"	B	Black
R29-141BK	7/8"	13/64"	1/4"	5/8"	8"	3/8"	B	Black
R29-141BR	7/8"	13/64"	1/4"	5/8"	8"	3/8"	B	Brown
R29-142BK	1"	13/64"	3/8"	3/4"	8"	3/8"	C	Black
R29-142BR	1"	13/64"	3/8"	3/4"	8"	3/8"	C	Brown
R29-144BK	1-1/8"	1/4"	3/8"	1"	6"	1/2"	D	Black
R29-144BR	1-1/8"	1/4"	3/8"	1"	6"	1/2"	D	Brown
R29-145BK	7/8"	1/4"	1/4"	1/2"	10"	3/8"	B	Black
R29-275BK	7/8"	5/32"	3/16"	3/8"	8"	5/16"	A	Black
R29-275BR	7/8"	5/32"	3/16"	3/8"	8"	5/16"	A	Brown

For quantities less than 100 pieces, please inquire.

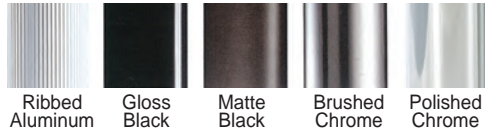
# SCREW CHART

SCREW PART #	DESCRIPTION
A SCR-6625PHZ	#6 x 5/8" Pan Head Zinc
B SCR-8625PHZ	#8 x 5/8" Pan Head Zinc
C SCR-8100PHZ	#8 x 1" Pan Head Zinc
D SCR-1750PHZ	#10 x 3/4" Pan Head Zinc

# ADJUSTABLE TABLE LEGS

**New**

Finishes:



Ribbed Aluminum    Gloss Black    Matte Black    Brushed Chrome    Polished Chrome

## FOLDING TABLE LEGS - 2" Diameter

**Material:** Steel & Aluminum

- 27-3/4" high x 2" diameter
- Single button release foldable leg
- 220 lb. capacity per leg
- Sold in sets of 4
- Supplied with levelers - adjustable to 1-1/8"

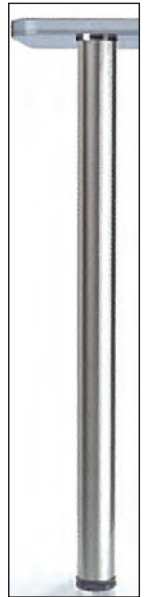
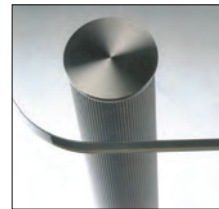


PART #	FINISH
FTL-AL	Ribbed Aluminum
FTL-BK	Matte Black
FTL-PC	Polished Chrome

## UV TABLE LEGS - 2-3/8" Diameter

**Material:** Steel & Aluminum with a Stainless Steel Mounting Plates  
Mounting Plate is Brushed Stainless Finish

- 27-3/4" high x 2-3/8" diameter
- For glass table tops (stainless steel mounting plates included)
- 660 lb. capacity per leg
- Sold in sets of 4
- Supplied with levelers- adjustable to 1-1/8"
- Requires UV adhesive- sold separately  
*see page 138*



PART #	FINISH
UVTL-AL	Ribbed Aluminum
UVTL-BK	Gloss Black
UVTL-MB	Matte Black
UVTL-BC	Brushed Chrome

## CAST ALUMINUM FURNITURE LEGS WITH RUBBER FOOT BUMPERS

Finishes: SC = Satin Chrome, CHR = Brite Chrome

**WGL-300-SC**  
**WGL-310-CHR**  
Overall Height: 14-3/4"  
Weight: 1.80 lbs. ea.



**WGL-210-SC**  
**WGL-220-CHR**  
Overall Height: 15-1/4"  
Weight: 2.25 lbs. ea.



**WGL-330-SC**  
**WGL-320-CHR**  
Overall Height: 27-1/4"  
Weight: 3.95 lbs. ea.



**WGL-260-SC**  
**WGL-250-CHR**  
Overall Height: 29-1/2"  
Weight: 4.70 lbs. ea.

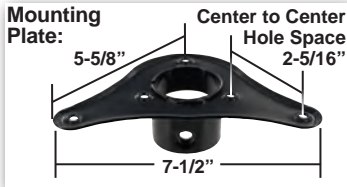


# ADJUSTABLE TABLE LEGS - 2-3/8" DIAMETER

## 14 SERIES

**Material:** Steel  
**Finishes:** Black, Aluminum, Polished Chrome and Brushed Nickel

- 28" High
- Height Adjustment: 1-1/4"
- Each set comes with 4 legs & 4 steel mounting plates (Unassembled).
- The thickness of the table top must be at least 1"
- Use #10 Panhead wood screws



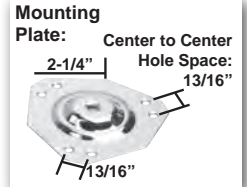
PART #	FINISH
14BK	Black
14AL	Aluminum
14PC	Polished Chrome
14BN	Brushed Nickel



## TL4 & TL6 SERIES

**Material:** Steel  
**Finishes:** Black, Chrome and Matte Nickel

- Available in 2 heights: 6" & 16"
- Height adjustment: + 1-7/16"
- Each set comes with 4 legs & 4 steel mounting plates (Unassembled).
- The thickness of the table top must be at least 1"
- Use #10 Panhead wood screws



### TL4 SERIES - 6"



PART #	FINISH
TL4-2002-BK	Black
TL4-2002-CHR	Chrome
TL4-2002-MN	Matte Nickel

### TL6 SERIES - 16"

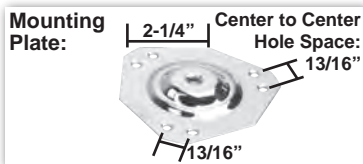


PART #	FINISH
TL6-2002-BK	Black
TL6-2002-CHR	Chrome
TL6-2002-MN	Matte Nickel

## TLC8 SERIES

**Material:** Steel  
**Finishes:** Black, Chrome and Matte Nickel

- 28" High
- Height adjustment: + 1-7/16"
- Each set comes with 4 legs & 4 steel mounting plates (Unassembled).
- The thickness of the table top must be at least 1".
- Use #10 Panhead wood screws



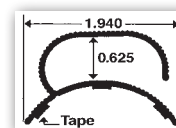
PART #	FINISH
TLC8-2002-BK	Black
TLC8-2002-CHR	Chrome
TLC8-2002-MN	Matte Nickel



## WIRE MANAGEMENT FOR ROUND TABLE LEGS

**Material:** PVC  
 5 Ft. lengths with Adhesive Black

Fits 2-3/8" Table Leg



PART #
CWM-1575-BK



# METAL FURNITURE LEGS WITH PLATE



PART #	DESCRIPTION	FINISH
A WGL-804A-CHR	5" H Zinc Leg	Brite Chrome
B WGL-628CHR	5" H Zinc Leg	Brite Chrome
WGL-628SC	5" H Zinc Leg	Satin Chrome
C WGL-635CHR	5" H Zinc Leg	Brite Chrome
WGL-635SC	5" H Zinc Leg	Satin Chrome
D WGL-929CHR	5" H Zinc Leg	Brite Chrome
E WGL-813CHR	5" H Zinc Leg	Brite Chrome
F WGL-926CHR	5" H Zinc Leg	Brite Chrome
G WGL-640CHR	5" H Zinc Leg	Brite Chrome
H WGL-203CHR	6" H Zinc Leg	Brite Chrome
I WGL-8113-CHR	5" H Stainless Steel Leg	Brite Chrome
J WGL-8112-CHR	6" H Stainless Steel Leg	Brite Chrome
K WGL-8112-SN	6-1/4" H Stainless Steel Leg	Satin Nickel
L WGL-8111-SS	6-1/4" H Stainless Steel Leg	Brushed Stainless Steel
M WGL-ERG-SIL	8-1/4" H Steel Leg	Silver

## ABS PLASTIC LEG



**ABS Plastic**  
2-1/4" x 2-1/4" x 2-1/2"



PART #	FINISH
O-755-MV2	Matte Chrome
O-755-MV7	Matte Nickel

## PLASTIC LEGS

**HIGH DENSITY BROWN POLYETHYLENE**  
Thread Size 5/16-18 x 1" Stem

**R70-200**  
**New**



2" High x 2" Round  
Tapers to 1-5/8"

**R70-300**



3" High x 2" Round  
Tapers to 1-3/4"

**R70-400**

**New**



4" High x 2" Round  
Tapers to 1-1/2"

**R70-500**



5" High x 2" Round  
Tapers to 1-11/16"



## METAL LEGS WITH THREADED STEMS

<b>New</b> 	<b>New</b> 	<b>New</b> 	<b>New</b> 		<b>New</b> 
<b>A</b> Overall Height: 7"	<b>B</b> Overall Height: 5-1/2"	<b>C</b> Overall Height: 5-1/4"	<b>D</b> Overall Height: 6"	<b>E</b> Overall Height: 4"	<b>D</b> Overall Height: 4"

PART #	DESCRIPTION	FINISH
<b>A</b> WGL-3019-CHR	7"H Zinc leg with 5/16" x 1" Threaded Stem	Brite Chrome
<b>B</b> WGL-3112-SIL	5-1/2"H Zinc leg with 5/16" x 1" Threaded Stem	Brushed Silver
<b>C</b> WGL-938-CHR	5-1/4"H Zinc leg with 5/16" x 1" Threaded Stem	Brite Chrome
<b>C</b> WGL-938-PEW	5-1/4" H Zinc leg with 5/16" x 1" Threaded Stem	Pewter
<b>D</b> WGL-8244-SC	6"H Zinc leg with 5/16" x 1" Threaded Stem	Satin Chrome
<b>E</b> WGL-988CHR	4" H Zinc leg with 5/16" x 1" Threaded Stem	Brite Chrome
<b>F</b> WGL-8329-CHR	4" Zinc leg with 5/16" x 1" Threaded Stem	Brite Chrome

## METAL SOFA LEGS WITH PLATE

<b>New</b>  8-1/4" 6" 6" <b>G</b> Overall Height: 2"	<b>New</b>  <b>H</b> Overall Height: 2-3/4"	<b>New</b>  <b>I</b> Overall Height: 3-1/2"	<b>New</b>  <b>J</b> Overall Height: 3-5/8"	<b>New</b>  <b>K</b> Overall Height: 3"																																																									
<b>New</b>  <b>L</b> Overall Height: 3-3/4"	<b>New</b>  <b>M</b> Overall Height: 4"	<b>New</b>  <b>N</b> Overall Height: 4"	<b>New</b>  <b>O</b> Overall Height: 4"	<b>New</b>  <b>P</b> Overall Height: 4-1/2"																																																									
<b>New</b>  <b>Q</b> Overall Height: 4-1/2"	<b>New</b>  <b>R</b> Overall Height: 4"	<table border="1"> <thead> <tr> <th>PART #</th> <th>DESCRIPTION</th> <th>FINISH</th> </tr> </thead> <tbody> <tr> <td><b>G</b> WGL-376-CHR</td> <td>2"H Triangle Zinc Leg</td> <td>Brite Chrome</td> </tr> <tr> <td><b>H</b> WGL-919CHR</td> <td>2-3/4"H Zinc Leg</td> <td>Brite Chrome</td> </tr> <tr> <td><b>H</b> WGL-919SC</td> <td>2-3/4"H Zinc Leg</td> <td>Satin Chrome</td> </tr> <tr> <td><b>I</b> WGL-919B-CHR</td> <td>3-1/2"H Zinc Leg</td> <td>Brite Chrome</td> </tr> <tr> <td><b>I</b> WGL-919B-SC</td> <td>3-1/2"H Zinc Leg</td> <td>Satin Chrome</td> </tr> <tr> <td><b>J</b> WGL-919A-CHR</td> <td>3-5/8 "H Zinc Leg</td> <td>Brite Chrome</td> </tr> <tr> <td><b>J</b> WGL-919A-MN</td> <td>3-5/8 "H Zinc Leg</td> <td>Matte Nickel</td> </tr> <tr> <td><b>K</b> WGL-981SC</td> <td>3 "H Zinc Leg</td> <td>Satin Chrome</td> </tr> <tr> <td><b>L</b> WGL-8343-CHR</td> <td>3-3/4"H Zinc Leg</td> <td>Brite Chrome</td> </tr> <tr> <td><b>M</b> WGL-634CHR</td> <td>4"H Zinc Leg</td> <td>Brite Chrome</td> </tr> <tr> <td><b>N</b> WGL-804SC</td> <td>4"H Zinc Leg</td> <td>Satin Chrome</td> </tr> <tr> <td><b>O</b> WGL-933CHR</td> <td>4"H Zinc Leg</td> <td>Brite Chrome</td> </tr> <tr> <td><b>P</b> WGL-983-PEW</td> <td>4-1/2"H Zinc Leg</td> <td>Pewter</td> </tr> <tr> <td><b>Q</b> WGL-814CHR</td> <td>4-1/2"H Zinc Leg</td> <td>Brite Chrome</td> </tr> <tr> <td><b>R</b> WGL-8110-SAT</td> <td>4"H Aluminum Leg</td> <td>Satin Chrome</td> </tr> <tr> <td><b>S</b> WGL-600SC</td> <td>4-3/4"H Zinc Leg</td> <td>Satin Chrome</td> </tr> <tr> <td><b>T</b> WGL-801CHR</td> <td>4-3/4"H Zinc Leg</td> <td>Brite Chrome</td> </tr> <tr> <td><b>U</b> WGL-801SC</td> <td>4-3/4"H Zinc Leg</td> <td>Satin Chrome</td> </tr> </tbody> </table>			PART #	DESCRIPTION	FINISH	<b>G</b> WGL-376-CHR	2"H Triangle Zinc Leg	Brite Chrome	<b>H</b> WGL-919CHR	2-3/4"H Zinc Leg	Brite Chrome	<b>H</b> WGL-919SC	2-3/4"H Zinc Leg	Satin Chrome	<b>I</b> WGL-919B-CHR	3-1/2"H Zinc Leg	Brite Chrome	<b>I</b> WGL-919B-SC	3-1/2"H Zinc Leg	Satin Chrome	<b>J</b> WGL-919A-CHR	3-5/8 "H Zinc Leg	Brite Chrome	<b>J</b> WGL-919A-MN	3-5/8 "H Zinc Leg	Matte Nickel	<b>K</b> WGL-981SC	3 "H Zinc Leg	Satin Chrome	<b>L</b> WGL-8343-CHR	3-3/4"H Zinc Leg	Brite Chrome	<b>M</b> WGL-634CHR	4"H Zinc Leg	Brite Chrome	<b>N</b> WGL-804SC	4"H Zinc Leg	Satin Chrome	<b>O</b> WGL-933CHR	4"H Zinc Leg	Brite Chrome	<b>P</b> WGL-983-PEW	4-1/2"H Zinc Leg	Pewter	<b>Q</b> WGL-814CHR	4-1/2"H Zinc Leg	Brite Chrome	<b>R</b> WGL-8110-SAT	4"H Aluminum Leg	Satin Chrome	<b>S</b> WGL-600SC	4-3/4"H Zinc Leg	Satin Chrome	<b>T</b> WGL-801CHR	4-3/4"H Zinc Leg	Brite Chrome	<b>U</b> WGL-801SC	4-3/4"H Zinc Leg	Satin Chrome
PART #	DESCRIPTION	FINISH																																																											
<b>G</b> WGL-376-CHR	2"H Triangle Zinc Leg	Brite Chrome																																																											
<b>H</b> WGL-919CHR	2-3/4"H Zinc Leg	Brite Chrome																																																											
<b>H</b> WGL-919SC	2-3/4"H Zinc Leg	Satin Chrome																																																											
<b>I</b> WGL-919B-CHR	3-1/2"H Zinc Leg	Brite Chrome																																																											
<b>I</b> WGL-919B-SC	3-1/2"H Zinc Leg	Satin Chrome																																																											
<b>J</b> WGL-919A-CHR	3-5/8 "H Zinc Leg	Brite Chrome																																																											
<b>J</b> WGL-919A-MN	3-5/8 "H Zinc Leg	Matte Nickel																																																											
<b>K</b> WGL-981SC	3 "H Zinc Leg	Satin Chrome																																																											
<b>L</b> WGL-8343-CHR	3-3/4"H Zinc Leg	Brite Chrome																																																											
<b>M</b> WGL-634CHR	4"H Zinc Leg	Brite Chrome																																																											
<b>N</b> WGL-804SC	4"H Zinc Leg	Satin Chrome																																																											
<b>O</b> WGL-933CHR	4"H Zinc Leg	Brite Chrome																																																											
<b>P</b> WGL-983-PEW	4-1/2"H Zinc Leg	Pewter																																																											
<b>Q</b> WGL-814CHR	4-1/2"H Zinc Leg	Brite Chrome																																																											
<b>R</b> WGL-8110-SAT	4"H Aluminum Leg	Satin Chrome																																																											
<b>S</b> WGL-600SC	4-3/4"H Zinc Leg	Satin Chrome																																																											
<b>T</b> WGL-801CHR	4-3/4"H Zinc Leg	Brite Chrome																																																											
<b>U</b> WGL-801SC	4-3/4"H Zinc Leg	Satin Chrome																																																											
<b>New</b>  <b>S</b> Overall Height: 4-3/4"	<b>New</b>  <b>T</b> Overall Height: 4-3/4"																																																												

# CAST ALUMINUM FURNITURE LEGS WITH RUBBER FOOT BUMPERS

**FINISHES:** SC = Satin Chrome, CHR = Brite Chrome

**WGL-124-SC**  
**WGL-125-CHR**  
Overall Height: 4"  
Weight: 0.35 lbs. ea.



**WGL-280-SC**  
**WGL-290-CHR**  
Overall Height: 4"  
Weight: 0.45 lbs. ea.



**WGL-020-SC**  
**WGL-010-CHR**  
Overall Height: 4"  
Weight: 0.65 lbs. ea.



**WGL-060-SC**  
**WGL-050-CHR**  
Overall Height: 4"  
Weight: 0.75 lbs. ea.



**WGL-240-SC**  
**WGL-230-CHR**  
Overall Height: 5-1/8"



**WGL-040-SC**  
**WGL-030-CHR**  
Overall Height: 5-1/4"  
Weight: 0.85 lbs. ea.



**WGL-160-SC**  
**WGL-150-CHR**  
Overall Height: 5-1/2"  
Weight: 1.10 lbs. ea.



**WGL-140-SC**  
**WGL-130-CHR**  
Overall Height: 6"  
Weight: .80 lbs. ea.



**WGL-070-SC**  
**WGL-080-CHR**  
Overall Height: 7-1/4"  
Weight: .90 lbs. ea.



**WGL-110-SC**  
**WGL-120-CHR**  
Overall Height: 8"  
Weight: .75 lbs. ea.



**WGL-100-SC**  
**WGL-090-CHR**  
Overall Height: 9-3/8"

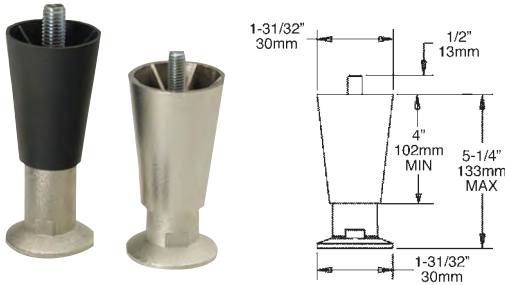


See pages 464-467 for Kitchen Island Legs

# ADJUSTABLE APPLIANCE/EQUIPMENT LEGS

NSF® CERTIFICATE NUMBERS AND MANUFACTURER NAME CAN BE SUPPLIED BY OUR SALES STAFF UPON CALLING OUR TOLL FREE NUMBER INDICATED BELOW

## 4" HEAVY DUTY APPLIANCE LEGS



- Hi-temp, impact resistant thermoplastic body.
- Strong, die-cast flanged foot is nickel plated.
- Height adjusts 1-1/4".
- 3/8" - 16 Heavy duty steel mounting stud.
- Static load rating is 2000 lbs. per leg.

PART #	FINISH	THREADED STEM
HDW-1902-BK	Black	3/8-16 Stud
HDW-1902-NP	Nickel Plated	3/8-16 Stud

## STAINLESS STEEL CLAD LEGS WITH ADJUSTABLE FOOT



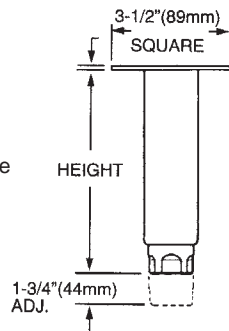
- Cost Saving alternative to stainless steel.
- Stainless Steel Clad with strong engineered plastic internal construction.
- Round Foot with non-marking plastic glide.
- 2" overall diameter.
- Static load rating is 2000 lbs per leg.

PART #	HEIGHT	FOOT ADJUSTS	THREADED STEM
HDW-1907-4	4"	up to 1-3/4"	3/8-16 Stud
HDW-1908-4	6"	up to 2"	1/2-13 Stud
HDW-1908-5	6"	up to 2"	5/8-11 Stud
HDW-1908-6	6"	up to 2"	3/4-10 Stud

## TUBULAR LEG ASSEMBLY



- Stainless steel.
- 1-5/8" diameter.
- 3-1/2" square removable mounting plate.
- Static load rating - 2000 lbs. per leg.

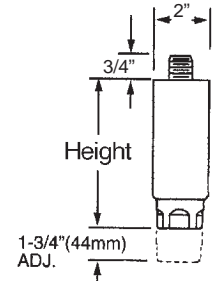


PART #	HEIGHT
HDW-1901	6"
HDW-1901-4	4"

## TUBULAR LEG ASSEMBLY



- Stainless steel.
- 1-5/8" diameter.
- 1/2-13 x 3/4" stud.
- Static load rating - 2000 lbs. per leg.

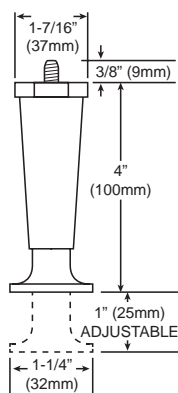


PART #	HEIGHT
HDW-1903	6"
HDW-1903-4	4"

## 4" APPLIANCE LEG



- Nickel plated flange foot.
- 3/8-16 x 3/8" stud.
- Static load rating - 250 lbs. per leg.



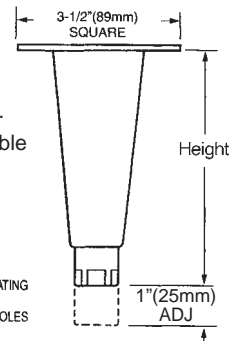
PART #	HEIGHT
HDW-1905	4"

## ECONOLINE LEG



- Nickel plated hex foot.
- 3-1/2" square removable mounting plate.
- Static load rating - 2000 lbs. per leg.

ALL MODELS HAVE A STATIC LOAD RATING OF 2000 LBS. (900kg) PER LEG  
MTG PLATE HAS (4) 5/16" (8mm) DIA. HOLES ON 2-5/8" (66mm) CENTERS.



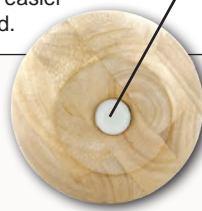
PART #	HEIGHT
HDW-1900	6"
HDW-1900-4	4"

# WOOD FURNITURE LEGS

- Available in Unfinished Hardwood.
- 5/16-18 Thread.

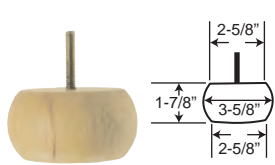
Unfinished = UN

Each furniture leg comes with a 1/4" thick slide on the bottom making it easier to move furniture around.

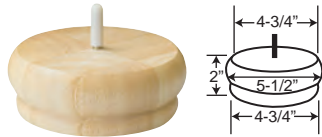


## Round Bun Feet

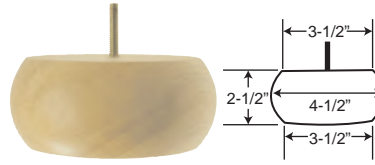
BUN32-UN



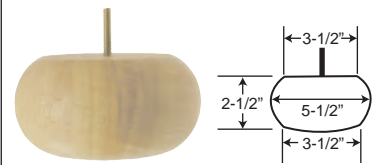
BUN31-UN



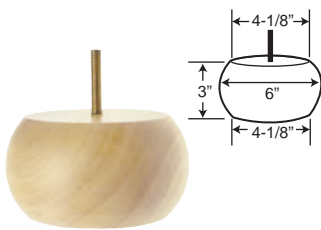
BUN83-UN



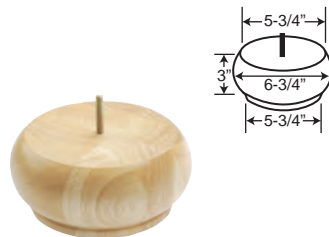
BUN41-UN



BUN03-UN



BUN89-UN

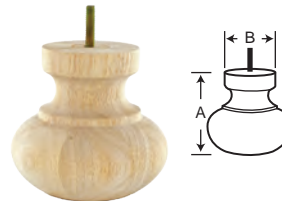


BUN26-UN

A = 4" B = 4-7/8"

BUN27-UN

A = 4-1/2" B = 4-7/8"

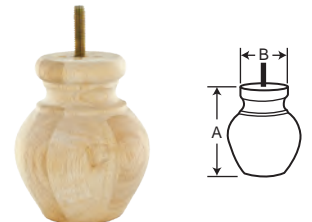


BUN24-UN

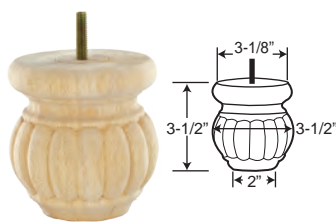
A = 4" B = 2-5/8"

BUN25-UN

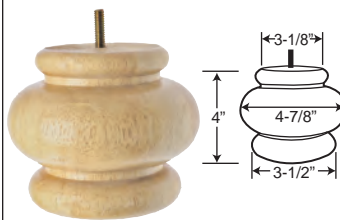
A = 4-1/2" B = 3-3/8"



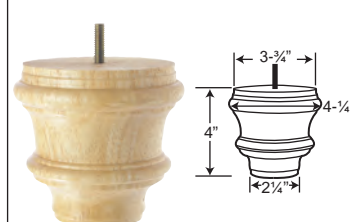
BUN23-UN



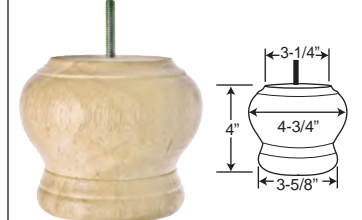
BUN40-UN



BUN39-UN

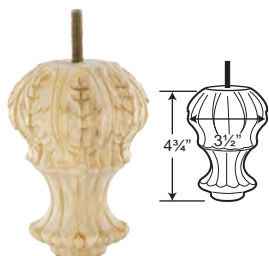


BUN44-UN

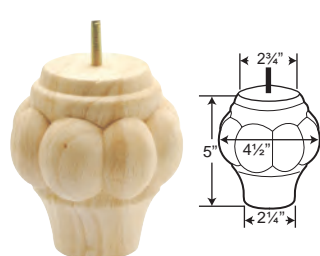


## Sofa Legs

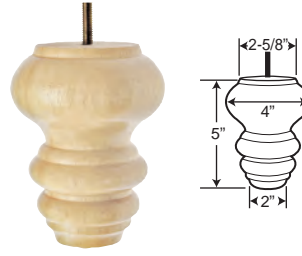
BUN121-UN



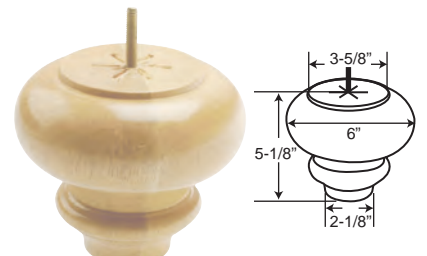
BUN330-UN



BUN14-UN

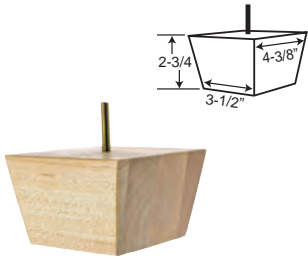


BUN88-UN



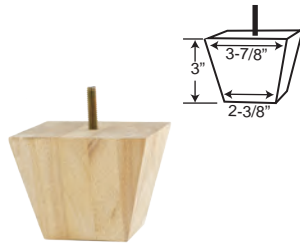
## Square Bun Feet

**BUN09-UN**

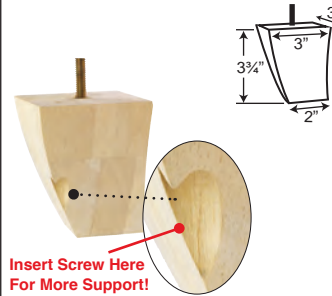


**BUN34-UN**

*Includes glide/screws*



**BUN57-UN**

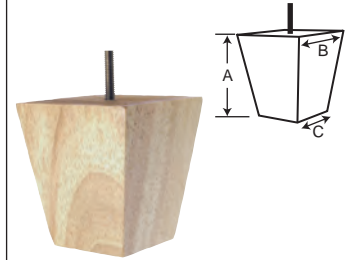


**BUN49-UN**

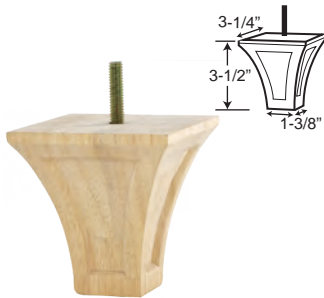
A = 4" B = 4" C = 2-1/2"

**BUN50-UN**

A = 5" B = 3-3/4" C = 2-1/2"



**BUN103-UN**

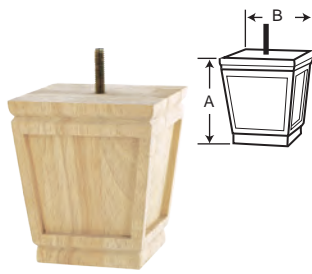


**BUN47-UN**

A = 4" B = 4"

**BUN48-UN**

A = 4-1/2" B = 4"



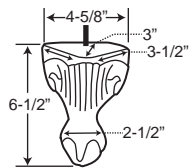
- Available in Unfinished Hardwood.
- 5/16-18 Thread.

Each furniture leg comes with a 1/4" thick slide on the bottom making it easier to move furniture around.

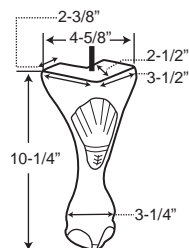


## Queen Ann

**BUN51-UN.**



**BUN38-UN**



**New**

## STAINLESS STEEL BOLT DOWN TABLE BASES

**Material:** Stainless Steel & Steel

**Finishes:** Brushed Stainless Steel

- Available in two heights- 28-3/8" for table height **\*(-T)** & 42-1/2" for bar height **\*(-B)**
- Column: 3" diameter steel column
- Plate: 12" x 12" spider style plate
- Packed: 1 base per carton



PART #	BASE DIAMETER	MAX TOP SIZE
TB-B17-SS-*	17"	24" x 24"
TB-B22-SS-*	22"	36" x 36"

## STAINLESS STEEL SQUARE TABLE BASES

**Material:** Stainless Steel & Steel

**Finishes:** Brushed Stainless Steel

- Available in two heights - 28-3/8" for table height **\*(-T)** & 42-1/2" for bar height **\*(-B)**
- Column: 3" diameter steel column
- Plate: 12" x 12" spider style plate
- Packed: 1 base per carton



PART #	BASE SIZE	MAX TOP SIZE
TB-SQ17-SS-*	17" x 17"	24" x 24"
TB-SQ22-SS-*	22" x 22"	36" x 36"

## X-STYLE CAST IRON TABLE BASES

**Material:** Cast Iron & Steel

**Finishes:** Matte Black Wrinkle

- Available in two heights- 28" for table height **\*(-T)** & 40" for bar height **\*(-B)**
- Column: 3" diameter steel column
- Plate: 9" x 9" spider style plate
- Packed: 1 base per carton



PART #	LEG SPREAD	MAX TOP SIZE
+ TB-X522-*	5" x 22"	+ 36" x 96"
TB-X2230-*	22" x 30"	30" x 42"
TB-X2222-*	22" x 22"	30" x 30"
TB-X3030-*	30" x 30"	42" x 42"

+ *Note: Table top size reflects mounting with 2 bases or with on side mounted to the wall*

## STEEL TABLE BASES

**Material:** Chrome Plated Steel with Adjustable Levelers

- Column: 2-1/4", 16 gauge
- Leg Spread: 32"
- Plate: 11" x 11", 12 gauge
- Packed Per Carton: 1 Base
- Weight Per Carton: 15 lbs. 6 oz.



PART #	MAX TOP SIZE	HEIGHT
KD-5012	48"	28-1/2"

## ROUND CAST IRON TABLE BASES

**Material:** Cast Iron & Steel

**Finishes:** Matte Black Wrinkle

- Available in two heights- 29" for table height **\*(-T)** & 41" for bar height **\*(-B)**
- Column: 3" diameter steel column
- Plate: 9" x 9" spider style plate
- Packed: 1 base per carton
- Bar height available with foot ring option



FOOT RING

PART #	BASE DIAMETER	MAX TOP SIZE	FOOT RING
TB-RD22-*	22"	36" x 36"	No
TB-RDF22-*	22"	36" x 36"	Yes